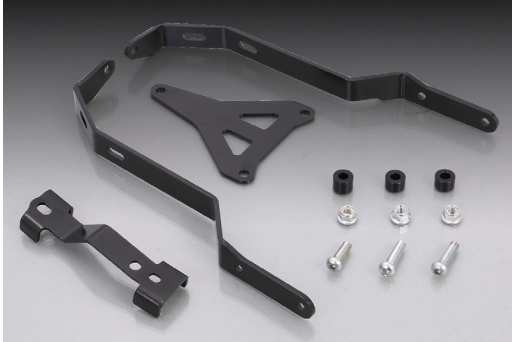




BODY RELATED PARTS

MONKEY 125

**FOR MORE RACING STYLE
 WITH
 DOWN STYLE FENDER STAY!**



Changes up style stock fender to down style.

STOCK FENER



DOWN FENDER STAY



COMPARISON



DOWN FENDER STAY

CODE	PRICE
680-1300900	¥6,600
<ul style="list-style-type: none"> ● FOR STOCK FENDER ● STAY : STEEL WITH BLACK ● INSTALLING BOLT / NUT INCLUDED 	
APPLICATION	MONKEY125 (JB02)

STEERING RELATED PARTS

'18 PCX, PCX150 etc.

**REAR SHOCK ABSORBER
 FOR SPORT RIDE!
 COORDINATE WITH BODY
 COLOR!!**



Rear shock absorber for sport ride newly released. 3 colors for vehicle colors newly released !!

KITACO REAR SHOCK ABSORBER

COLOR	CODE	PRICE
DARK RED	520-1447020	¥13,000
WHITE	520-1447080	
GRAY METALLIC	520-1447090	

- BODY : BLACK ● SPRING : DARK RED / WHITE / GRAY METALLIC
- LENGTH : 350mm ● PRELOAD : NON-STEP
- ADJUSTABLE RANGE : 15mm ● OIL-CHARGED DUMPER
- TANDEM USABLE ● SOLD IN PAIRS

APPLICATION | PCX (JF81), PCX150 (KF30), PCX HYBRID (JF84)



ANTI-THEFT RELATED PARTS

'18 GSX-S125, GSX-R125

**CONVENIENT HELMET
 HOLDER FOR STOP!**



Helmet lock to tighten with tandem step (leftside). For commuting, touring and leisure convenient life.

HELMET HOLDER

CODE	PRICE
564-2440000	¥2,800
<ul style="list-style-type: none"> ● PLATE : STEEL / BLACK ● HELMET LOCK type-2 / BLACK ● 2 KEYS INCLUDED ● M6 x 30 SCREWS INCLUDED 	
APPLICATION	GSX-S125 (DL32B) GSX-R125 (DL33B)