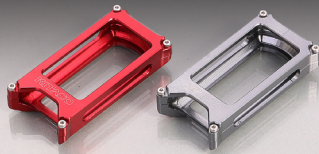




BODY RELATED PARTS

SUPER CUB C125

ALUMINUM MACHINED DRESS-UP SMART KEY!!



Aluminum case machined from solid aluminum!



SMART KEY CASE

COLOR	CODE	PRICE
RED	000-9001120	¥4,800
GUN-METALLIC	000-9001190	
● ALUMINUM MACHINED ● ALUMITE FINISH		
APPLICATION	SUPER CUB C125 (JA48), PCX (JF81), PCX150 (KF30) etc.	

※ Do not tighten with over torque.
○ SUPER CUB C125 SMART KEY



DRESS-UP! R-CASE COVER RING

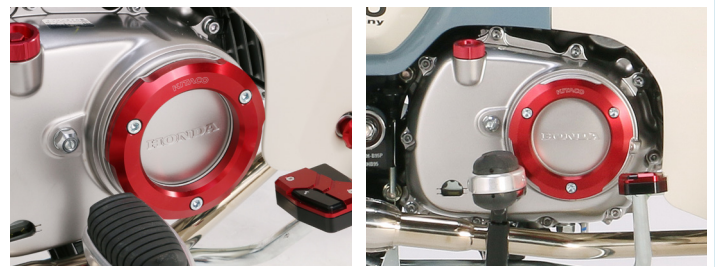


Just exchange with stock R protector cover (resin). Makes cool looking with aluminum machined case.

R CASE COVER RING SET

COLOR	CODE	PRICE
RED	307-1310620	¥6,500
GUN-METALLIC	307-1310690	
● TOP RING : ALUMINUM MACHINED ● ALUMITE FINISH ● RING PLATE : ALUMINUM SILVER ALUMITE FINISH ● INSTALLING BOLT / WASHER INCLUDED		
APPLICATION	SUPER CUB C125 (JA48), MONKEY125 (JB02)	

※ GROM (JC61/75) NOT USABLE AS INSTALLING PITCH IS DIFFERENT.



BRAKE RELATED PARTS

SUPER CUB C125

DIRECT BRAKE TOUCH & FULL OF DURABILITY!



IMAGE

Super Teflon material is adapted for hose inner tube which has low permeability, low friction ability. Stainless steel outer tube with soft vinyl protection tube coated.

SUPER TEFLON STAINLESS STEEL MESH BRAKE HOSE SET

TYPE	CODE	PRICE
FRONT	773-1310100	¥7,800
● FITTING : C × 2 ● HOSE LENGTH : 815mm ※1 ● STAINLESS STEEL BANJO BOLT, SEALING WASHER, TIE-WRAP INCLUDED		
APPLICATION	SUPER CUB C125 (JA48)	

※ 1. Hose length means hose without fitting
※ Brake fluid (sold separately) required

