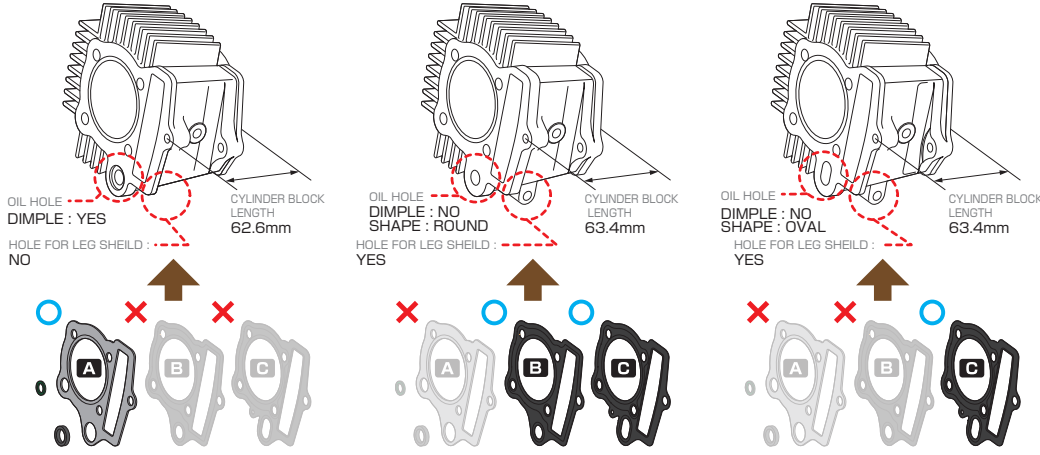


ENGINE RELATED PARTS

4 STROKE MINI

ATTENTION PLEASE CHOOSE CORRECT CYLINDER HEAD GASKET FOR ϕ 51/52 CASTING SLEEVE CYLINDER

There are 3 types of ϕ 51/52 cylinders due to production lot.
 Cylinder head gasket is different from the type of cylinders.
 Please prepare for the correct gasket when purchasing as replacement.
 ※Excludes ϕ 48(75cc), ϕ 52 chrome cylinder (88cc,108cc), ϕ 54 cylinder (95cc,117cc,124cc).



CYLINDER HEAD GASKET

A
 PAPER
 1.50mm thick
 + O ring

B
 STAINLESS STEEL
 0.25mm thick
 ROUND OIL HOLE

C
 STAINLESS STEEL
 0.25mm thick
 OVAL OIL HOLE