

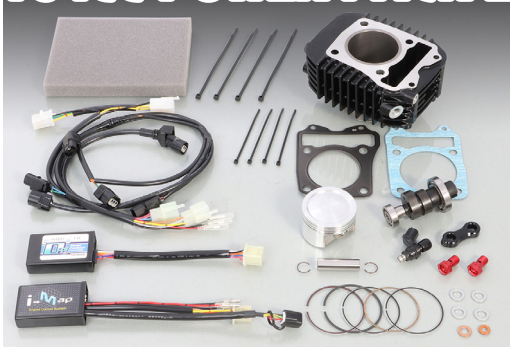


BIG BORE KIT RELATED PARTS

GROM (JC75)

EVERYTHING YOU NEED FOR BIG BORE KIT IS IN THE KIT!! POWER PACK NEWLY RELEASED!

164cc POWER PACK LIGHT!



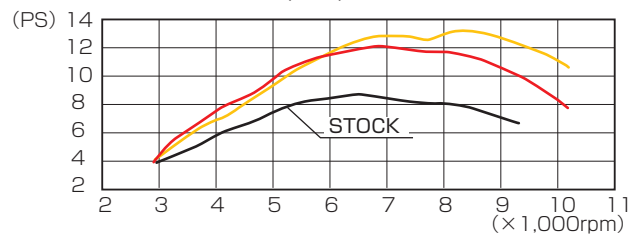
for GROM (JC75)

164cc POWER PACK LIGHT

CODE	PRICE
230-1451010 CLICK	¥59,000
<ul style="list-style-type: none"> ● ALUMINUM CASTING SLEEVE CYLINDER ● DISPLACEMENT : 164cc ● BORE : φ 60 ● PISTON : CASTING (3R) ● COMPRESSION RATIO : 11.1 : 1 (STOCK 9.3 : 1) ● I-MAP INJECTION CONTROLLER ● O₂ SENSOR FEEDBACK CANCELLER ● LARGE CAPACITY INJECTOR (×1.6) ● HIGH CAMSHAFT type 2 ● OIL GALLERY (SILVER), UNION BOLT (RED), ALUMINUM SEALING WASHER, TIE-BAND & COLLARS INCLUDED. ● NON-LEAD PREMIUM GASOLINE TYPE 	
APPLICATION	GROM (JC75)

※ Super oil cooler kit (sold separately/Vol.06-3) required.

- LIGHT BIG BORE KIT 164cc + HIGH CAMSHAFT type 2 + UNI FILTER KIT + EXTREME R MUFFLER + LARGE CAPACITY INJECTOR (× 1.6)
- LIGHT BIG BORE KIT 164cc + HIGH CAMSHAFT type 2 + EXTREME R MUFFLER + LARGE CAPACITY INJECTOR (× 1.6)



LIGHT PISTON

ALUMINUM CASTING PISTON
164cc
181cc

COUPLER-ON HARNESS

NO WIRING MODS REQUIRED!!
Just insert the harness.



O₂ SENSOR FEEDBACK CANCELLER

It cancels the feedback control of the genuine ECU and enables fuel adjustment.
type : H-001 ver.1.0



i-map INJECTION CONTROLLER

(164cc/181cc POWER PACK LIGHT / 125 HIGH COMP, in common)

Switch the map that matches the degree of tuning with the DIP switch (right)
USER ORIGINAL MAP (MAP-16) EDITABLE

LIGHT CYLINDER

Oil line outlet is built-in



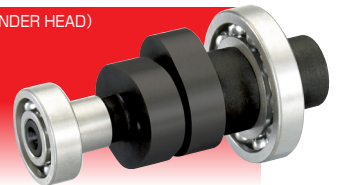
ALUMINUM CASTING SLEEVE CYLINDER

164cc

181cc

HIGH CAMSHAFT type 2

VALVE TIMING ANGLE (FOR STOCK CYLINDER HEAD)
IN VALVE OPEN 8° BTDC
CLOSE 46° ABDC
EX VALVE OPEN 40° BBDC
CLOSE 12° ATDC
at 1mm LIFT
※ NO DECOMP FUNCTION BUILT-IN



Default maps (MAP-1 to 15) are preinstalled in the included i-map

- MAP-1 STOCK
- MAP-2 JC75 STOCK INJECTOR + HIGH COMP + HIGH CAM type1 + STOCK AIR CLEANER + EXTREME R MUFFLER
- MAP-3 JC75 STOCK INJECTOR + HIGH COMP + HIGH CAM type1 + UNI FILTER KIT + EXTREME R MUFFLER
- MAP-4 JC75 LARGE CAPACITY INJECTOR (× 1.6) + 164cc LIGHT + HIGH CAMSHAFT type2 + STOCK AIR CLEANER + EXTREME R MUFFLER
- MAP-5 JC75 LARGE CAPACITY INJECTOR (× 1.6) + 164cc LIGHT + HIGH CAMSHAFT type2 + UNI FILTER KIT + EXTREME R MUFFLER
- MAP-6 ※ COMBUSTION CHANGE OF MAP-5 (Type-A)
- MAP-7 ※ COMBUSTION CHANGE OF MAP-5 (Type-B)
- MAP-8 JC75 LARGE CAPACITY INJECTOR (× 1.6) + 181cc LIGHT + HIGH CAMSHAFT type2 + STOCK AIR CLEANER + EXTREME R MUFFLER
- MAP-9 JC75 LARGE CAPACITY INJECTOR (× 1.6) + 164cc LIGHT + HIGH CAMSHAFT type2 + UNI FILTER KIT + EXTREME R MUFFLER
- MAP-10 ※ COMBUSTION CHANGE OF MAP-9 (Type-A)
- MAP-11 ※ COMBUSTION CHANGE OF MAP-9 (Type-B)
- MAP-12 JC75 LARGE CAPACITY INJECTOR (× 1.6) + NEO 164cc + THROTTLE BODY 34mm + EXTREME R MUFFLER
- MAP-13 JC75 LARGE CAPACITY INJECTOR (× 1.6) + NEO 181cc + THROTTLE BODY 34mm + EXTREME R MUFFLER
- MAP-14 JC75 LARGE CAPACITY INJECTOR (× 1.9) + DOHC 181cc + THROTTLE BODY 34mm + EXTREME R MUFFLER
- MAP-15 JC61 LARGE CAPACITY INJECTOR (× 1.9) + DOHC 181cc + THROTTLE BODY 34mm + RACING MUFFLER
- MAP-16 USER ORIGINAL MAP ※ 1

[REV LIMIT : MAP-1~11 / 10,500rpm MAP-12~15 / 11,000rpm]

※ 1.
PC INTERFACE CABLE (763-0500900) & a computer with an internet connection is required to update the original map. Software for setting (free) is downloadable from Kitaco website.