



BIG BORE KIT RELATED PARTS

GROM (JC75)

181cc POWER PACK LIGHT!

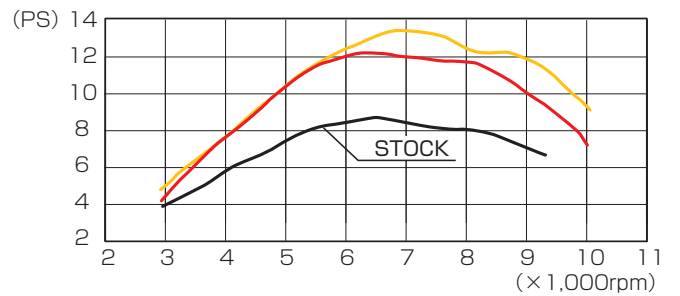


181cc POWER PACK LIGHT

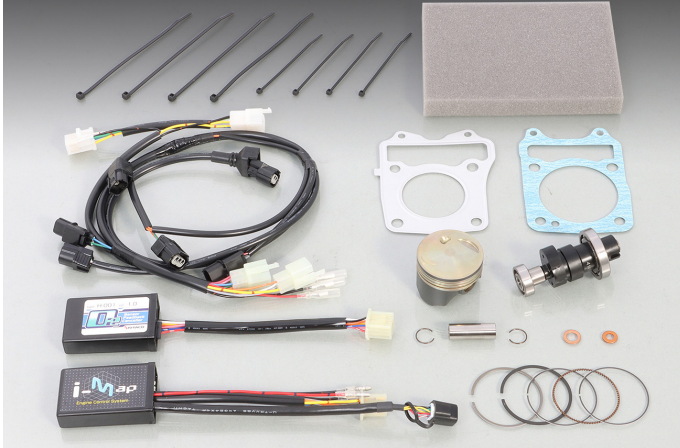
CODE	PRICE
230-1451020	¥60,000
<ul style="list-style-type: none"> <li>● ALUMINUM CASTING SLEEVE CYLINDER ● DISPLACEMENT : 181cc</li> <li>● BORE : <math>\phi</math> 63 ● PISTON : CASTING (3R) ● COMPRESSION RATIO : 11.1 : 1 (STOCK 9.3 : 1)</li> <li>● I-MAP INJECTION CONTROLLER ● O<sub>2</sub> SENSOR FEEDBACK CANCELLER ● LARGE CAPACITY INJECTOR (x1.6)</li> <li>● HIGH CAMSHAFT type 2 ● OIL GALLERY (SILVER), UNION BOLT (RED), ALUMINUM SEALING WASHER, TIE-BAND &amp; COLLARS INCLUDED.</li> <li>● NON-LEAD PREMIUM GASOLINE TYPE</li> </ul>	
APPLICATION   GROM (JC75)	

\* Super oil cooler kit (sold separately/Vol.06-3) required.

- LIGHT BIG BORE KIT 181cc + HIGH CAMSHAFT type 2 + UNI FILTER KIT + EXTREME R MUFFLER + LARGE CAPACITY INJECTOR (x 1.6)
- LIGHT BIG BORE KIT 181cc + HIGH CAMSHAFT type 2 + EXTREME R MUFFLER + LARGE CAPACITY INJECTOR (x 1.6)



125cc POWER PACK HIGH COMP TYPE!

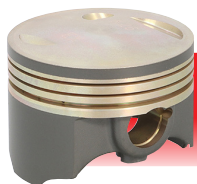
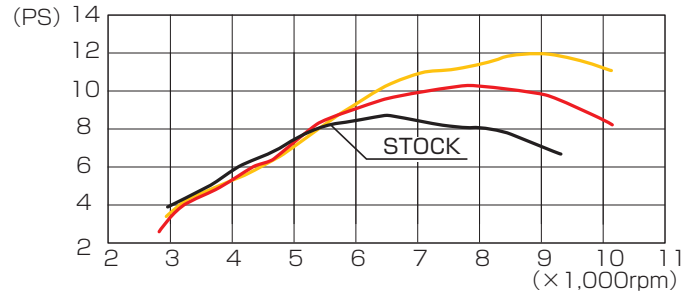


125cc POWER PACK (HIGH COMP)

CODE	PRICE
230-1451000	¥52,000
<ul style="list-style-type: none"> <li>● DISPLACEMENT : 125cc ● BORE : <math>\phi</math> 54.2 ● PISTON : FORGED (Molybdenum coat type)</li> <li>● COMPRESSION RATIO 12.2 : 1 (STOCK 9.3 : 1) ● I-MAP INJECTION CONTROLLER ● O<sub>2</sub> SENSOR FEEDBACK CANCELLER ● HIGH CAMSHAFT type 1 ● WASHERS incl.</li> <li>● NON-LEAD PREMIUM GASOLINE TYPE</li> </ul>	
APPLICATION   GROM (JC75)	

\* Super oil cooler kit (sold separately/Vol.06-3) required.

- HIGH COMP PISTON + HIGH CAMSHAFT type 1 + UNI FILTER KIT + EXTREME MUFFLER
- HIGH COMP PISTON + HIGH CAMSHAFT type 1 + EXTREME MUFFLER



HIGH COMP PISTON

ALUMINUM FORGED (Molybdenum coat type)  
COMPRESSION RATIO : 12.2 : 1  
(STOCK : 9.3 : 1)



HIGH CAMSHAFT type 1

VALVE TIMING ANGLE  
(FOR STOCK CYLINDER HEAD)  
IN VALVE OPEN 7° BTDC  
CLOSE 36° ABDC  
EX VALVE OPEN 37° BBDC  
CLOSE 9° ATDC  
at 1mm LIFT  
\* NO DECOMP FUNCTION BUILT-IN