



BIG BORE KIT RELATED PARTS

MONKEY125 (JB02)

181cc POWER PACK LIGHT!



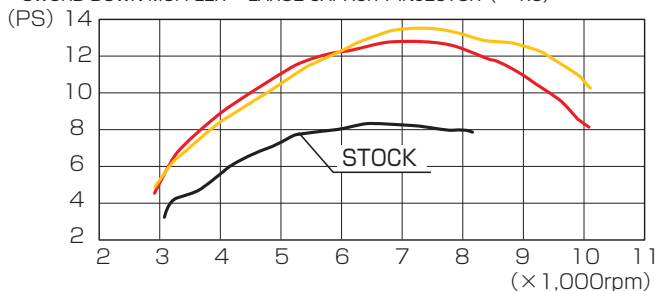
181cc POWER PACK LIGHT

CODE	PRICE
230-1300020	¥59,000
<ul style="list-style-type: none"> ● ALUMINUM CASTING SLEEVE CYLINDER ● DISPLACEMENT : 181cc ● BORE : ϕ 63 ● PISTON : CASTING (3R) ● COMPRESSION RATIO : 11.1 : 1 (STOCK 9.3 : 1) ● I-MAP INJECTION CONTROLLER ● O₂ SENSOR FEEDBACK CANCELLER ● LARGE CAPACITY INJECTOR (x1.6) ● HIGH CAMSHAFT type 2 ● OIL GALLERY (SILVER), UNION BOLT (RED), ALUMINUM SEALING WASHER, TIE-BAND & COLLARS INCLUDED. ● NON-LEAD PREMIUM GASOLINE TYPE 	
APPLICATION	MONKEY125 (JB02)

※ Super oil cooler kit (3ROW : 360-1300100 ¥20,000 / 5ROW : 360-1300200 ¥24,000) required.

— LIGHT BIG BORE KIT 181cc + HIGH CAMSHAFT type 2 + UNI FILTER KIT + SWORD DOWN MUFFLER + LARGE CAPACITY INJECTOR (x 1.6)

— LIGHT BIG BORE KIT 181cc + HIGH CAMSHAFT type 2 + STOCK AIR CLEANER + SWORD DOWN MUFFLER + LARGE CAPACITY INJECTOR (x 1.6)



125cc POWER PACK HIGH COMP TYPE!



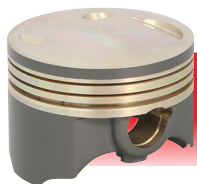
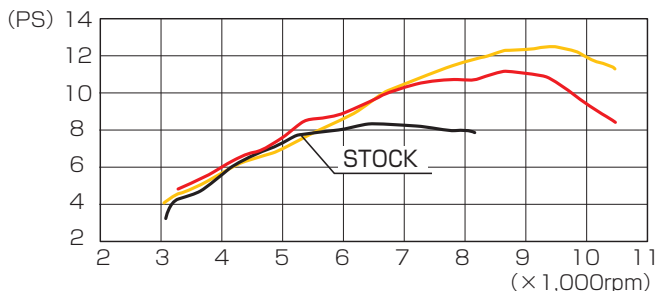
125cc POWER PACK (HIGH COMP)

CODE	PRICE
230-1300000	¥52,000
<ul style="list-style-type: none"> ● DISPLACEMENT : 125cc ● BORE : ϕ 54.2 ● PISTON : FORGED (Molybdenum coat type) ● COMPRESSION RATIO 12.2 : 1 (STOCK 9.3 : 1) ● I-MAP INJECTION CONTROLLER ● O₂ SENSOR FEEDBACK CANCELLER ● HIGH CAMSHAFT type 1 ● WASHERS incl. ● NON-LEAD PREMIUM GASOLINE TYPE 	
APPLICATION	MONKEY125 (JB02)

※ Super oil cooler kit (3ROW : 360-1300100 ¥20,000 / 5ROW : 360-1300200 ¥24,000) required.

— HIGH COMP PISTON + HIGH CAMSHAFT type 1 + UNI FILTER KIT + SWORD DOWN MUFFLER

— HIGH COMP PISTON + HIGH CAMSHAFT type 1 + STOCK AIR CLEANER + SWORD DOWN MUFFLER



HIGH COMP PISTON

ALUMINUM FORGED (Molybdenum coat type)
COMPRESSION RATIO : 12.2 : 1 (STOCK : 9.3 : 1)



HIGH CAMSHAFT type 1

VALVE TIMING ANGLE (FOR STOCK CYLINDER HEAD)
IN VALVE OPEN 7° BTDC
CLOSE 36° ABDC
EX VALVE OPEN 37° BBDC
CLOSE 9° ATDC
at 1mm LIFT
※ NO DECOMP FUNCTION BUILT-IN