



K·PIT

**REPLACEMENT LEVER
NEWLY RELEASED !!**



REPLACEMENT BRAKE LEVER (L/R) & CLUTCH LEVER FOR JAPANESE 4 MAKERS
※ SOME LEVERS HAVE DIFFERENT SHAPE & FINISH COMPARED TO GENUINE ONES.

★ REFER TO KITACO WEBSITE FOR DETAILS ★

YAMAHA

CLUTCH LEVER

TYPE	COLOR	CODE	GENUINE NUMBER	APPLICATION	PRICE
YL-26	BLACK	<u>70-525-64260</u> CLICK	B90-83912-00	MT-07/A ('21~'22), XSR700 ('22~'23), YZF-R7 WGP60th Anniv. ('22), MT-09SP ('18), XSR900 ('16~'20), YZF-R1WGP60th Anniv. ('22)/ YZF-R1M ('22) etc.	¥1,600

**ROTOR BOLT for GSX-R125 etc.
NEWLY RELEASED!**

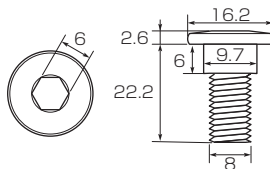


Genuine quality steel M8 rotor bolt newly released.

For more details



● SIZE (mm)



ROTOR BOLT (SUZUKI type)

QTY	CODE	PRICE
1	<u>70-500-72001</u> CLICK	¥240
3	<u>70-500-72101</u> CLICK	¥680

● REPLACEMENT ● STEEL ● P.1.25
● GENUINE NUMBER : 59218-09G10

APPLICATION	GSX-R125 ABS (DL32D/DL33B), GSX-S125 (DL32D/DL32B), ADDRESS 110 (CE47A), ADDRESS 125 (DT11A), BURGMAN 200/ABS (CH41A)
-------------	---

※ Screw lock agent applied.

**REPLACEMENT AIR CLEANER
ELEMENT
FOR CT125·HUNTER CUB!**



Replacement air element for stock air cleaner.

AIR CLEANER ELEMENT

CODE	PRICE
<u>70-341-14700</u> CLICK	¥1,800

● REPLACEMENT ● DRY TYPE
● GENUINE NUMBER : 17210-K2E-T00 ● SOLD EACH

APPLICATION	CT125·HUNTER CUB (JA55/JA65)
-------------	------------------------------