



BIG BORE KIT RELATED PARTS

GROM (JC61/JC75), MONKEY125 (JB02)

NEO CYLINDER

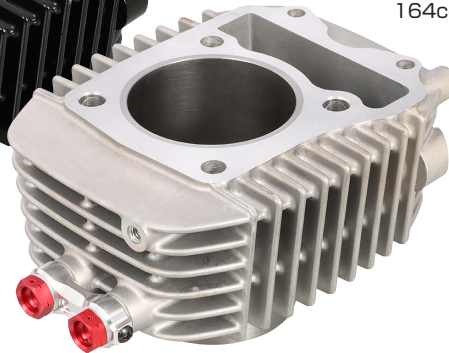
Aluminum casting iron sleeve cylinder with improved heat release efficiency.

164cc
BLACK Ver.

Oil line outlet built-in



181cc
SILVER Ver.



NEO FORGED PISTON

Aluminum forged piston with high durability
○ COMPRESSION RATIO : 11.5 : 1

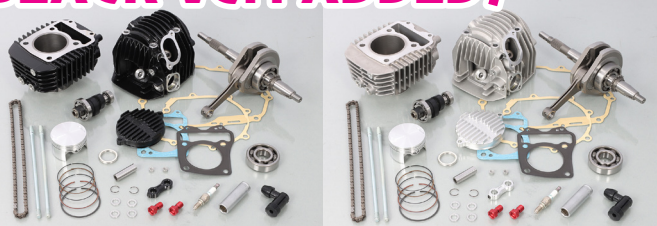
164cc



181cc



164cc NEO BIG BORE KIT RENEWAL!!
BLACK Ver. ADDED!



164cc NEO Big bore kit for GROM (JC61/JC75) , MONKEY125 (JB02) newly released. Advanced performance and durability is into its design concept for intense torque and flat rising.

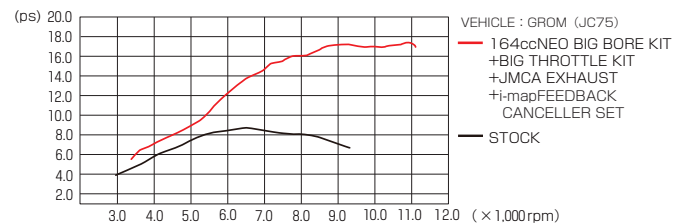
164cc NEO BIG BORE KIT

COLOR	CODE	PRICE
BLACK	212-1432750	¥ 115,000
SILVER	212-1432760	¥ 110,000

- ALUMINUM CASTING CYLINDER WITH STEEL SLEEVE
- DISPLACEMENT : 164cc ● BORE : ϕ 60 ● STROKE : 57.9mm
- PISTON : FORGED (3R) ● COMPRESSION RATIO : 11.5 : 1
- H-SHAPED REINFORCED CRANKSHAFT ● VALVE ASSEMBLED
- NON-LEAD PREMIUM GASOLINE TYPE

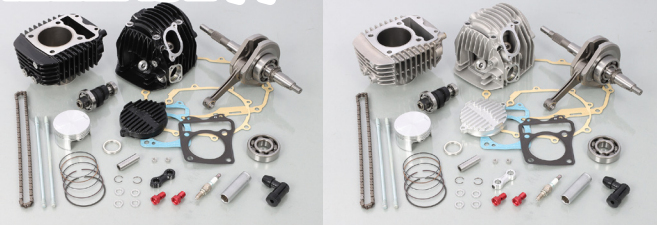
APPLICATION | GROM (JC61/75)、MONKEY125 (JB02)

※ No de-comp function built-in
※ Stock tappet cap reusable



Tested at Kitaco facility. Actual run may differ.

181cc NEO BIG BORE KIT RELEASE !!



181cc NEO Big bore kit for GROM (JC61/JC75) , MONKEY125 (JB02) newly released. Advanced performance and durability is into its design concept for intense torque and flat rising.

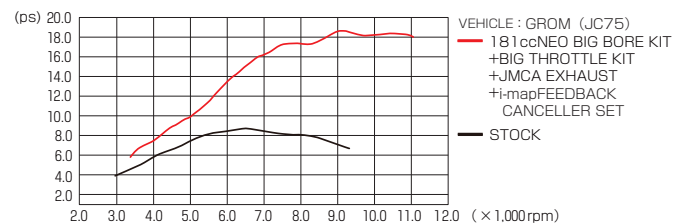
181cc NEO BIG BORE KIT

COLOR	CODE	PRICE
BLACK	212-1432850	¥ 125,000
SILVER	212-1432860	¥ 120,000

- ALUMINUM CASTING CYLINDER WITH STEEL SLEEVE
- DISPLACEMENT : 181cc ● BORE : ϕ 63 ● STROKE : 57.9mm
- PISTON : FORGE (3R) ● COMPRESSION RATIO : 11.5 : 1
- H-SHAPED REINFORCED CRANKSHAFT ● VALVE ASSEMBLED
- NON-LEAD PREMIUM GASOLINE TYPE

APPLICATION | GROM (JC61/75)、MONKEY125 (JB02)

※ No de-comp function built-in
※ Stock tappet cap reusable



Tested at Kitaco facility. Actual run may differ.

NOW ON SALE!!

ALUMINUM TAPPET CAP

- Aluminum machined with alumite finish
- SOLD EACH

SILVER : 310-1432900
BLACK : 310-1432901
PRICE : ¥4,980

