



## GROM RECOMMENDED PARTS

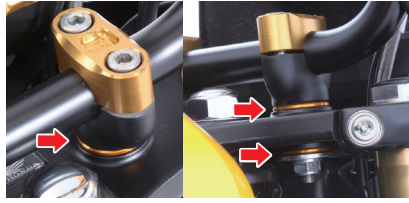
## GROM (JG92)



### KITACO × GEARS REAR SHOCK ABSORBER

| CODE   | PRICE   |
|--|---------|
| <a href="#">520-1452100</a> <small>CLICK</small> | ¥58,000 |

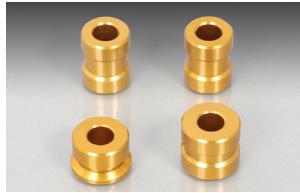
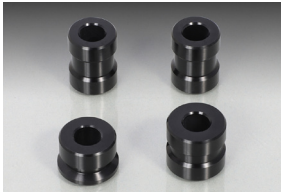
- LENGTH : 240mm (SAME AS JC92 STOCK) ● HEIGHT ADJUSTMENT : +7mm
- ALUMINUM BODY ADOPTED (GUN-METALLIC ALUMITE) ● MONO-TUBE WITH OIL & GAS SEPARATE DESIGN ● FREE PISTON STYLE ADOPTED
- PRELOAD : NON-STEP ● REBOUND ADJUSTMENT : 14 CLICKS ● TOOL INCL.
- TANDEM USABLE



### HANDLE RIGID MOUNT COLLAR

| COLOR | CODE   | PRICE  |
|-------|--|--------|
| BLACK | <a href="#">567-1432000</a> <small>CLICK</small> | ¥1,980 |
| GOLD  | <a href="#">567-1432010</a> <small>CLICK</small> |        |

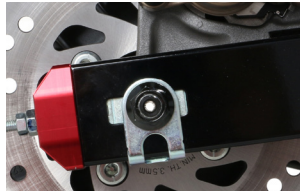
- ALUMINUM MACHINED WITH ALUMITE FINISH
- DIRECT FEELING OF WHEEL OPERATION IS IMPROVED BY CHANGING THE COLLAR FROM STOCK RUBBER TO ALUMINUM.



### AXLE COLLAR SET

| COLOR | CODE   | PRICE  |
|-------|--|--------|
| BLACK | <a href="#">093-1452250</a> <small>CLICK</small> | ¥3,000 |
| GOLD  | <a href="#">093-1452270</a> <small>CLICK</small> | ¥3,200 |

- FRONT / REAR AS A SET ● ALUMINUM MACHINED ● ALUMITE FINISH
- FRONT WEIGHT : 20.7g (STOCK : 68.75g ea.) ● REAR RIGHT : 19.6g (STOCK : 55.88g) \* WEIGHT : 89.1g (STOCK : 271.4g)



### HOLLOW AXLE SHAFT

| TYPE | CODE   | PRICE  |
|------|--|--------|
| REAR | <a href="#">498-1452100</a> <small>CLICK</small> | ¥3,800 |

- MATERIAL : CHROME MOLYBDENUM STEEL ● ZINC BLACK PLATING FINISH
- SHAFT O.D. :  $\phi$  12 ● LIGHTWEIGHT HOLE I.D.  $\phi$  5 PENETRATED
- REAR : SHAFT LENGTH (FROM NUT SEAT TO THE OTHER) : 298.5mm
- WEIGHT : 250g (NUT incl.) (STOCK : 300g)



### SPEED PULSE CONVERT UNIT

| CODE   | PRICE   |
|--|---------|
| <a href="#">762-1452100</a> <small>CLICK</small> | ¥10,000 |

- CORRECTS SPEED DISPLAY BY PICKING UP SPEED PULSE FROM GEAR. USES WHEN EXCHANGING SPROCKETS.
- COUPLER-ON ● CONVERT HARNESS, TIE-BAND INCL.



### DRIVE SPROCKET (FRONT)

| TEETH | CODE   | PRICE  |
|-------|--|--------|
| 12 ▲  | <a href="#">530-1010212</a> <small>CLICK</small> | ¥1,300 |
| 13 ▲  | <a href="#">530-1010213</a> <small>CLICK</small> | ¥1,300 |
| 14    | <a href="#">530-1010214</a> <small>CLICK</small> | ¥1,300 |
| 15    | <a href="#">530-1010215</a> <small>CLICK</small> | ¥1,300 |
| 16    | <a href="#">530-1010216</a> <small>CLICK</small> | ¥1,350 |
| 17    | <a href="#">530-1010217</a> <small>CLICK</small> | ¥1,400 |

- 420 SIZE ● STOCK TEETH : 15T ● STEEL WITH BLACK
- ▲ M6X10 CAP BOLT IS REQUIRED WHEN INSTALLING 12/13T



### DRIVEN SPROCKET (REAR)

| TEETH | CODE   | PRICE  |
|-------|--|--------|
| 35    | <a href="#">535-1452035</a> <small>CLICK</small> | ¥2,000 |
| 36    | <a href="#">535-1452036</a> <small>CLICK</small> | ¥2,100 |
| 37    | <a href="#">535-1452037</a> <small>CLICK</small> | ¥2,200 |
| 38    | <a href="#">535-1452038</a> <small>CLICK</small> | ¥2,300 |
| 39    | <a href="#">535-1452039</a> <small>CLICK</small> | ¥2,400 |
| 40    | <a href="#">535-1452040</a> <small>CLICK</small> | ¥2,500 |
| 41    | <a href="#">535-1452041</a> <small>CLICK</small> | ¥2,600 |
| 42    | <a href="#">535-1452042</a> <small>CLICK</small> | ¥2,700 |

- 420 SIZE ● STOCK TEETH : 38T ● STEEL WITH BLACK



### WIDE CHAIN GUIDE PLATE

| CODE   | PRICE  |
|--|--------|
| <a href="#">683-1452400</a> <small>CLICK</small> | ¥1,400 |

- LARGER SPROCKET IS USABLE BY EXCHANGING WITH STOCK CHAIN GUIDE PLATE. ● STEEL WITH BLACK ● UP TO 17T COMPATIBLE