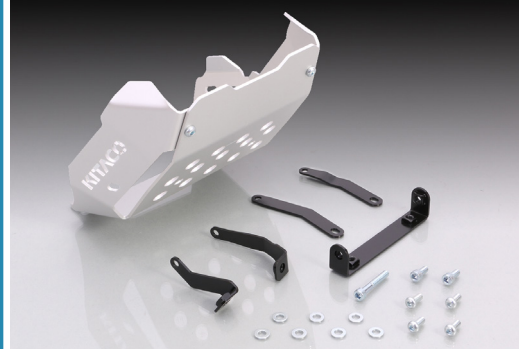




BODY RELATED PARTS

CROSS CUB 110 ('18)

**DRESS-UP ENGINE BOTTOM!!
FOR '18 CROSS CUB 110!!**



Dress-up engine bottom with under guard. Also protects engine from small stones.



UNDER GUARD

CODE	PRICE
632-1446000	¥20,000
<ul style="list-style-type: none"> ● BOLT-ON ● GUARD : ALUMINUM ● SILVER ALUMITE FINISH ● 3mm THICK ● STAY : STEEL WITH BLACK ● INSTALLING BOLT INCLUDED 	
APPLICATION CROSS CUB110 (JA45) * CROSS CUB 50 (AA06) NOT USABLE	

- * Oil exchange possible when installing under guard
- * KITACO STAINLESS STEEL SPORTY UP MUFFLER USABLE : 544-1446300
- KITACO STAINLESS STEEL SPORTY UP MUFFLER USABLE : 544-1439400
- MINI CABTON MUFFLER USABLE : 543-1446850
- * Stock muffler not usable. Other manufacturers muffler might not be usable.

ACCESSORY RELATED PARTS

SUPER CUB C125

**NO WIRING MODS REQUIRED!
FOR SUPER CUB C125!
EXTRACT POWER
FOR ACCESSORY!**



To prepare battery supply for cell phone, and etc.!! Just insert between couplers. No wiring mods required.

USB POWER SUPPLY KIT

CODE	PRICE
757-1310000	¥4,400
<ul style="list-style-type: none"> ● INTERFACE : USB 2.0 / 1.1 : 2 PORT ● INPUT / OUTPUT VOLTAGE : DC12V / DC5V : MAX 2,000mA (When using 1 port) ● ACC⊕... ACCESSORY / GND⊖ : EARTH ● STAY : STEEL WITH BLACK ● DRIP-PROOF TYPE * ● LED BUILT-IN (BLUE) ● EXCLUSIVE HARNESS INCLUDED ● MARK TUBE INCLUDED (KITACO ORIGINAL) 	
APPLICATION SUPER CUB C125 (JA48)	

- * 12V VEHICLE ONLY.
- * Not completely waterproof. Do not use it when washing vehicle or rain. Use rubber cap when not using.
- * Condensation might happen inside the cap according to the weather. Do not install this near the engine and remove the dew with air duster / vacuum if happened.
- * Not for the large current products such as amplifiers & compressors

Just connect with couplers



Power supply harness

Install usb power supply kit under main key



LED (BLUE) ON

