



"BRAKE DISC BOLT (HONDA type)" NEWLY RELEASED !!

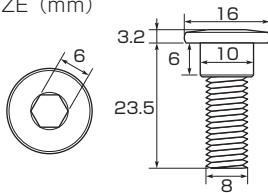
K・PIT

**ROTOR BOLT
 NEWLY RELEASED!**



Stock quality steel M8 rotor bolt newly released.

● SIZE (mm)



ROTOR BOLT (HONDA type 1)

GTY	CODE	PRICE
1	70-500-71001	¥240
3	70-500-71101	¥660

- FOR REPLACEMENT ● STEEL
- COMPATIBLE HONDA NUMBER : 90105-KGH-900, 90105-MBB-000, 90105-KR3-000, 90105-MV9-003, 90105-KL8-741, 90105-K1N-V00, 90105-KSP-870, 90105-MFL-D20

APPLICATION

MONKEY125 (JB02 : FRONT ※ ABS NOT USABLE · REAR), CT125 · HUNTER CUB (JA55 : FRONT · REAR), GROM (JC61/75 : FRONT · REAR), GROM (JC92 : REAR), DIO110 (JF31/58 : FRONT), DIO110 (JK03 : FRONT), PCX (JF28/56/81 : FRONT), PCX150 (KF12/18/30 : FRONT), PCX (JK05 : FRONT · REAR), PCX160 (KF47 : FRONT · REAR) etc.

- ※ Rotor bolts for MONKEY125 (JB02) : FRONT ABS, GROM (JC92) : FRONT is coming soon!
- ※ Make sure of the size before purchase
- ※ Not reusable

SUSPENSION RELATED PARTS

GROM (JC92)

**CHROME MOLYBDENUM
 HOLLOW AXLESHAFT
 FOR GROM (JC92) REAR
 NEWLY LINE-UP!!**

**17%
 LIGHTWEIGHT**

17% more lightweight with hollow (φ5) inside the axleshaft. Stronger with chrome molybdenum!!



中空(φ5)の証

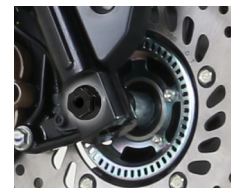
HOLLOW AXLE SHAFT (REAR)

CODE	PRICE
498-1452100	¥3,800

- REAR ● MATERIAL : CHROME MOLYBDENUM
- ZINC BLACK PLATING FINISH ● SHAFT O.D. : φ12
- LIGHTWEIGHT HOLE I.D. : PENETRATE: φ5
- SHAFT LENGTH : 298.5 mm
- WEIGHT (nut included) : 250g (STOCK : 300g)
- COMPATIBLE HONDA NUMBER : 42301-K26-G00

APPLICATION | GROM (JC92)

**15%
 LIGHTWEIGHT**



**NOW ON SALE!!
 HOLLOW AXLE SHAFT
 GROM (JC92) (FRONT)**

MONKEY125 (FRONT)
 GROM (JC61/75)(FRONT) etc.
 CODE : 498-1432010
 PRICE : ¥3,300

PLASTICS DRESS-UP PARTS

V-STROME 250/ABS

**JUST ATTACH!
 DRESS-UP TANK CAP WITH
 CARBON LIKE STICKER!!**



Dress-up fuel tank cap with carbon like sticker.

TANK CAP DECAL (SUZUKI type1)

CODE	PRICE
000-9032150	¥900

- CARBON-LIKE DECAL ● SOLD EACH

APPLICATION | V-STROME 250/ABS (DS11A)

