

**SBS BRAKE PAD (KAWASAKI)**



The most attractive thing for  
**SBS BRAKE PAD** is  
**CONTROLLABILITY &  
HIGH DURABILITY!**



**STREET  
925SERIES**

BRAKE LINING :  
**CERAMIC**



PRODUCED FOR STREET USE WITH  
CONTROLLABILITY AND DURABILITY

MATRIX HOOK  
ADOPTED



COST :	■ ■ ■ ■ ■
LIFE :	■ ■ ■ ■ ■
DRY PERFORMANCE :	■ ■ ■ ■ ■
WET PERFORMANCE :	■ ■ ■ ■ ■
CONTROLLABILITY :	■ ■ ■ ■ ■
ANTI-FADE PERFORMANCE :	■ ■ ■ ■ ■
FRICITION COEFFICIENT :	■ ■ ■ ■ ■

PAD No.	PAD SIZE (mm)	APPLICATION	CODE	PRICE
925HF		<p>● FRONT BRAKE PAD <b>KAWASAKI</b> Z125 PRO (BR125)</p>	<p>777-0925000 </p>	<p>¥3,300</p>



PHOTO : E100

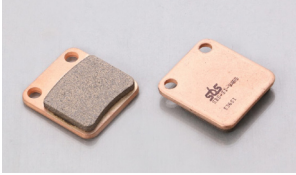
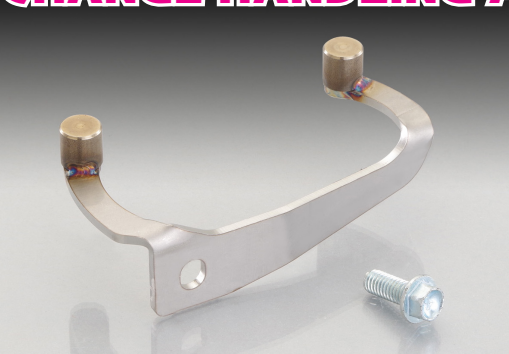


PHOTO : 536SI

**NOW ON SALE!!**  
**SBS BRAKE PAD (REAR) (E100/536SERIES)**  
E100 (CERAMIC) : 777-0100000    ¥2,800  
536SI (SINTER METAL) : 777-0536070    ¥4,600

**GROM**

**EASY INSTALLING!  
CHANGE HANDLING ANGLE!**



For race use only. Changes handling angle for  
race / circuit run.

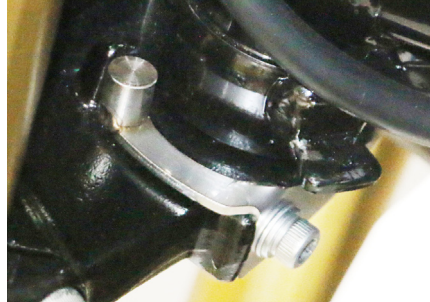
**HANDLE STOPPER**

CODE	PRICE
560-1432010	¥3,800

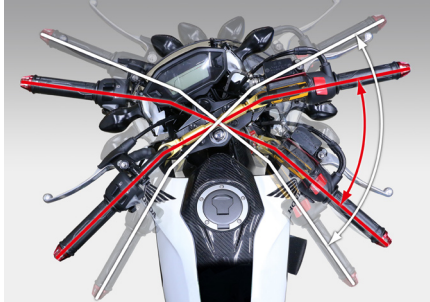
- RACE USE ONLY ● STAINLESS STEEL
- SH BOLT WITH FLANGE

APPLICATION	GROM '13~'15: FNo.JC61-1000001~1299999 ※ '16: FNo.JC61-1300001 ~ ※ ※ FOR RACE USE GROM RACER MODEL (HRC)
-------------	---

※ RACE USE ONLY as handle angle is not for street use  
※ HANDLE LOCK NOT USABLE



**IMAGE**  
※ Comes with flange bolt  
※ Horn assy needs to be removed.



Handling angle image  
It changes 52 degree from stock 82 degree.