

FUEL TANK CAP DECAL

APPLICATION : GROM (JC75/92) / MONKEY 125 (JB02/03) / CL250 (MC57)
(BLACK CARBON-TONE) 000-9031150

●Thank you for purchasing Kitaco product. Read and understand the instruction before installing.

ATTENTION (MUST READ)

- This product is designed and made exclusive for application models, do not use other models. Do not modify the way which is not listed or it will cause damage and trouble.
 - We are not responsible for violation of law or damages and accidents caused by assembling mistake and improper setting.
 - Please ask authorized mechanic for assembling and setting.
 - This instruction sheet is for the instruction for stock condition.
 - Refer to the manufacturer service manual when installation.
 - Bolts and nuts may get loosen by engine vibration. Make sure not to loosen any bolts and nuts before driving.
- ※Metal/resin products get discolored/rust for ages as well as how to use. Please understand when using.

HOW TO TAKE CARE STICKERS

ATTENTION!

- This product is for dress-up. Unable to perfectly protected from scratch, etc. Do not use for other purposes.
- Direct sunlight and use for ages may get discolored, peeling, etc. Please understand before installation.
- FLAMMABLE : Do not use with fire.
- Once stick firmly, it cannot attach again.

HOW TO INSTALL (Instruction below is just a reference.)

- Ready to attach
 - Check where to attach before installation.
 - Please do installation with fuel tank cap closed to prevent from dust.
- 1) Clean up the dust, grease, wax from attach side.
- How to attach
 - 2) Match “▲ mark” on center and fuel tank shape to standard, attach lightly and slowly as following on right side.

○HOW TO ATTACH : WATER ATTACH (WET)

Spray the water with a little bit detergent to body (tank cap) attach surface and sticker attach surface. (It is able to attach without water, but it might cause of breaking and decrease stickness when re-attach.)

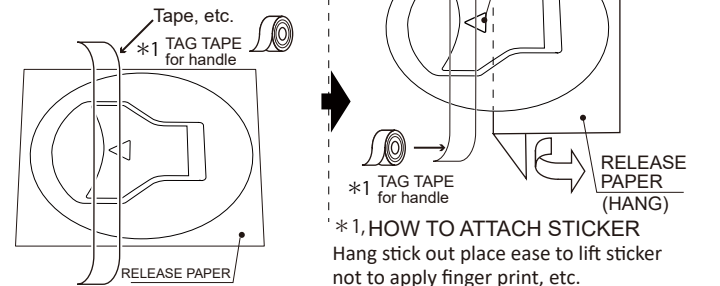
○HOW TO ATTACH : WITHOUT WATER (EX1)

Peel half of release paper to decide where to attach. Then attach with peeling rest of release paper. (Be careful not to apply finger print or grease.)

○HOW TO ATTACH : WITHOUT WATER (EX2)

Following illustration, attach to sticker inside (pultab) and outside (cap surrounding) as connected by using tape, etc. Then hold both end of tape to decide where to attach and attach it.

IN CASE OF ATTACH BOTH ONCE ; Peel half of release paper and hang it. Before peeling release paper, fix sticker inside (pulltab) and outside (cap surrounding) by tape, etc not to slide. (Make tape to out the sticker for tag.)



●HOW TO DISCHARGE AIR BUBBLE

3) Decide where to attach with sliding sticker when installation, then attach with release attaching surface water and air bubble to outside.

[ATTENTION! : Be careful not to hold down with hard thing because it might cause of break and scratch.]

※Slide soft cloth from center to outside for discharge air bubble. (Depending on the size, it may not be removed completely. The limit is to be inconspicuous.)

4) After installation, please leave for a half to full day to completely stuck.