

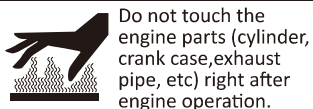
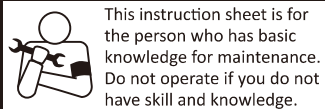
# CLUTCH CENTER SPRING

CODE : 307-0220300 APPLICATION : CYGNUS GRYPHUS (SEJ4J) BKG / JOG 125 (SEJ5J) BKR1

● Thank you for purchasing Kitaco product. Read and understand the instruction before installing.

## ATTENTION (MUST READ)

- This parts is made exclusive for racing use. Note that racing parts are not covered under warranty. Installed vehicles cannot ride on the general public road. We are not responsible for violation of law or damages and accidents caused by assembling mistake and improper setting.
- Please ask authorized mechanic for assembling and setting. Ask a specialist at specialty shop if you do not understand the role of the surrounding parts.
- Do not modify the way which is not listed or it will cause damage and trouble. This product is precision machinery, do not apply excessive force or disassemble.
- Refer to the manufacturer service manual when installation.
- By installing this parts, the output characteristic is different from normal condition. Please power up brake, increase handling stability to match the output. Please ride carefully.
- Do not spark the plug outside cylinder for spark check. It will ignite and explode so be careful of it.



**SPEC** By strengthen spring, encourage torque band pulley shifting. Getting back pulley from high ratio by changing speed, sudden acceleration, riding on hill to low ratio fastly and forcibly, it gets balanced changing speed characteristic. Also, doing some processing including WPC on surface make stable performance under high heat and long time use.

**ATTENTION!** This WPC clutch center spring is setting parts as weight roller, etc. The best spring strength is different from rider weight, machine use frequency and favorite riding characteristic. Only installing center spring prevent shifting, it might cause of lower the highest speed.

### OPTION PARTS (Please purchase as needed.)

▼ Specified tools are required.

※ Please ask to shops to install if not have any specified tools.

YAMAHA GENUINE TOOLS	SHEAVE SPRING COMPRESSOR	90890-04134	Tool for removing nut by holding clutch / driven face Assy compression spring.
	SHEAVE FIXED BLOCK	90890-04135	
KITACO SPECIFIED TOOLS	UNIVERSAL HOLDER	674-0500000	Hold primary fixed sheave (drive face) rotating.
	PULLEY HOLDER	674-0500900 674-0500910	Loosen secondary sheave nut by driven lock wrench while holding clutch carrier by holder.
	DRIVEN LOCK WRENCH (39mm)	674-0500411	Tool to remove / install clutch / driven pulley nut (A).

### HOW TO INSTALL

※ Refer to the genuine service manual when installation.

1 Place vehicle to flat surface, then remove V belt case / air filter element cover.

#### Removing primary fixed sheave

2 Fix pulley side (front side) primary fixed sheave (drive face) by universal holder that specified tool, then remove primary sheave nut. Remove washer, primary fixed sheave, collar and movable drive face Assy while holding ramp plate on the back side of pulley.

#### Removing secondary sheave and V belt

3 Fix clutch housing by pulley holder (specified tool), then remove clutch housing nut.

4 Hold clutch carrier by pulley holder, then loosen secondary sheave nut for a 1 rotating by driven lock wrench. (39mm / specified tool)

※ At this time, do not remove secondary sheave nut.

#### Disassemble secondary sheave

5 Referring to illustration, assemble sheave spring compressor "B" and sheave fixed block "C" (specified tool) to secondary sheave. Then shrink the spring to remove secondary sheave nut "A".

- ※ When installing secondary sheave nut "A", face taper side to clutch carrier side.
- 6 Install removed parts in the reverse order.
- ※ Do not apply grease to V belt, clutch and driven face Assy.
- 7 Revert removed parts back to original. Move V belt to minimum diameter of drive pulley (front side) and maximum diameter of torque cam (rear side), then set with V belt is strained.
- ※ Tighten nut with specified torque.
- ※ Make sure not to any break on V belt case gasket.
- ※ If abnormal noise occurs after installation, warm up or riding, stop engine immediately and check the installation position and parts.

### DISASSEMBLE SECONDARY SHEAVE

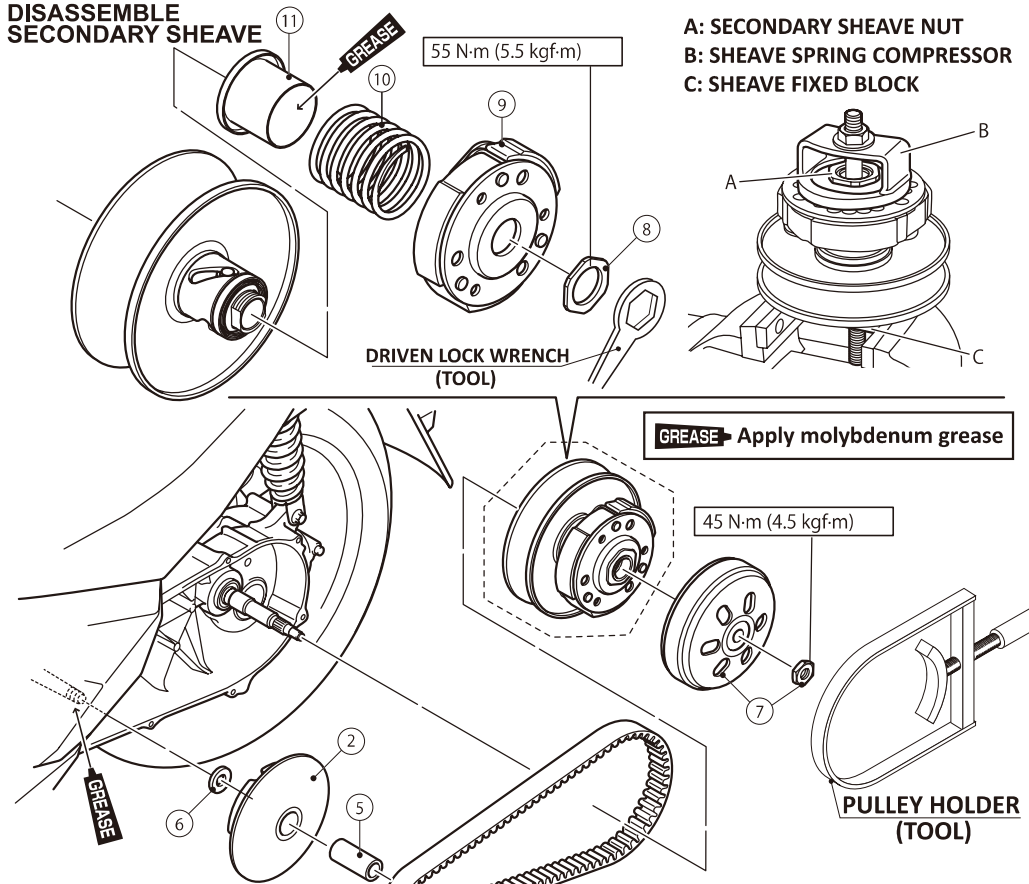


FIGURE	NAME
1	PRIMARY FIXED SHEAVE NUT/ PLATE WASHER
2	PRIMARY FIXED SHEAVE DRIVE FACE
3	V BELT
4	WASHER
5	PULLEY BOSS
6	COLLAR
7	CLUTCH HOUSING / NUT
8	SECONDARY SHEAVE NUT
9	CLUTCH CARRIER ASSY
10	COMPRESSION SPRING (CLUTCH CENTER SPRING)
11	SPRING SHEET

### ATTENTION WHEN INSTALLING

- ※ Do not use impact wrench. (If using it, it might cause of deformation, broken screw, crank shaft, pulley, face.)
- ※ Degrease pulley bush of primary fixed sheave and pulley boss to prevent from oil diffusion.

230410 Y-H



3-8-13 NAGATA,  
HIGASHI-OSAKA,  
OSAKA, JAPAN