

CLUTCH KIT AUTO CLUTCH

NO.1 /2

CODE	307-1414120
APPLICATION	DAX50 (AB26) / SOLO (AC17) / GIORCUB (AF53)
	SUPER CUB50 / PRESS CUB50 (12V CDI MODEL) (FNO,C50-8900001 ~ 0095210/FNO,C50-0200001 ~ /FNO,AA01-1000001 ~ 1699999)
	SUPER CUB50 / PRESS CUB50 (FI MODEL) (FNO,AA01-1700001 ~)
	LITTLE CUB (FNO,C50-4300001 ~ /FNO,AA01-1000001 ~ 3999999)
	LITTLE CUB (FI MODEL) (FNO,AA01-4000001 ~)
	CHALY50 (FNO,CF50-3000031 ~) / MOTRA / XR50R (AE03) / CRF50F (AE03)
REMARK	Please use under 88cc displacement and 10,000rpm. If using with more, clutch will be slipped and get unable to shift correctly. Be careful of it.

- Thank you for purchasing Kitaco product. Read and understand the instruction before installing.
- For installing this product, specified tools and seal set are required.
- Keep this instruction sheet safe as setting manual.
- ※ Spare parts do not include instruction sheet. Keep this instruction sheet safe.

ATTENTION (MUST READ)

- This product is reinforce clutch for tuned engine. Avoid clutch slip and increase durability. Transmitting engine power to tires. Please install engine suitable for performance.
- We are not responsible for violation of law or damages and accidents caused by assembling mistake and improper setting.
- Please follow this instruction sheet when installation. Do not modify the way which is not listed or it will cause damage and trouble.
- Please use engine oil that written on this instruction sheet.
- Refer to the manufacturer service manual when installation.
- Bolts and nuts may get loosen by engine vibration. Make sure not to loosen any bolts and nuts before driving.
- Apply engine oil to each parts when installation.
- This product is designed and made exclusive for application vehicles, do not use other models.
- Refer to the manufacturer service manual when disassemble, assemble and adjusting.



FLAMMABLES
Inflammable high gasoline is used during operation.



Do not touch the engine parts (cylinder, crankcase, muffler, engine oil, etc) right after engine operation. Make sure to start the installation after the engine parts are completely cool.



This sheet is intended for the person who has basic knowledge for maintenance. Do not operate if you do not have skill and knowledge.



Do not touch rotating gear or other rotating parts. Do not rotate tire, etc.

OPTION PARTS (SOLD SEPARATELY)

▼ Other special tools are required. (The using tools are different from models, please refer to the service manual.)		
HONDA OEM SPECIAL TOOL	CLUTCH OUTER HOLDER	-
KITACO SPECIFIED TOOL	CENTER LOCK NUT WRENCH	674-1013900
	TORQUE WRENCH	-
GASKET	R CRANK CASE COVER GASKET	966-1015004

PACKING LIST

FIGURE	NAME	CODE	QTY
1	M5x10 BOLT	-	× 4
2	CLUTCH OUTER COVER GASKET	-	× 1
3	CLUTCH OUTER COVER	-	× 1
4	LOCK WASHER (CLAW)	-	× 1
-	CLUTCH Assy	-	× 1
5	SCREW	-	× 4
6	PLAIN WASHER	-	× 4
7	DUMPER SPRING	-	× 4
-	DRIVE PLATE Assy	-	× 1
8	CLUTCH SPRING	-	× 4
9	CLUTCH WEIGHT STOPPER RING	-	× 1
10	DRIVE PLATE	-	× 1
11	CLUTCH WEIGHT	-	× 28
12	CLUTCH WEIGHT SET RING	-	× 1
13	DRIVE GEAR OUTER	-	× 1
14	CLUTCH CENTER	-	× 1
15	WAVE WASHER	-	× 1
16	CIRCLIP	-	× 1
17	CLUTCH PLATE A	-	× 1
18	CLUTCH FREE SPRING	-	× 1
19	CLUTCH DISC A	-	× 2
20	CLUTCH DISC B	-	× 1
21	CLUTCH PLATE B	-	× 1
22	SET RING	-	× 1
23	CLUTCH LOCK NUT 14mm	-	× 1
24	LOCK WASHER (TAPERED) 14mm	-	× 1
OP	RIGHT SIDE CRANK CASE COVER GASKET	-	× 1

NORMAL PARTS

FIGURE	NAME	QTY
A	M6x80 or M6x40 BOLT	× 1
B	M6x65 BOLT	× 2
C	M6x40 BOLT	× 5
D	RIGHT SIDE CRANK CASE COVER ASSY	× 1
E	KNOCK PIN	× 2
F	CLUTCH BALL RETAINER	× 1
G	PLATE SIDE SPRING	× 1
H	CLUTCH LEVER	× 1
I	OIL THROUGH	× 1
J	OIL THROUGH SPRING	× 1
K	CLUTCH CAM	× 1
L	OIL THROUGH BEARING	× 1
M	PRIMARY DRIVE GEAR	× 1
N	CLUTCH CENTER GUIDE	× 1
O	COLLAR (17mm)	× 1

ATTENTION

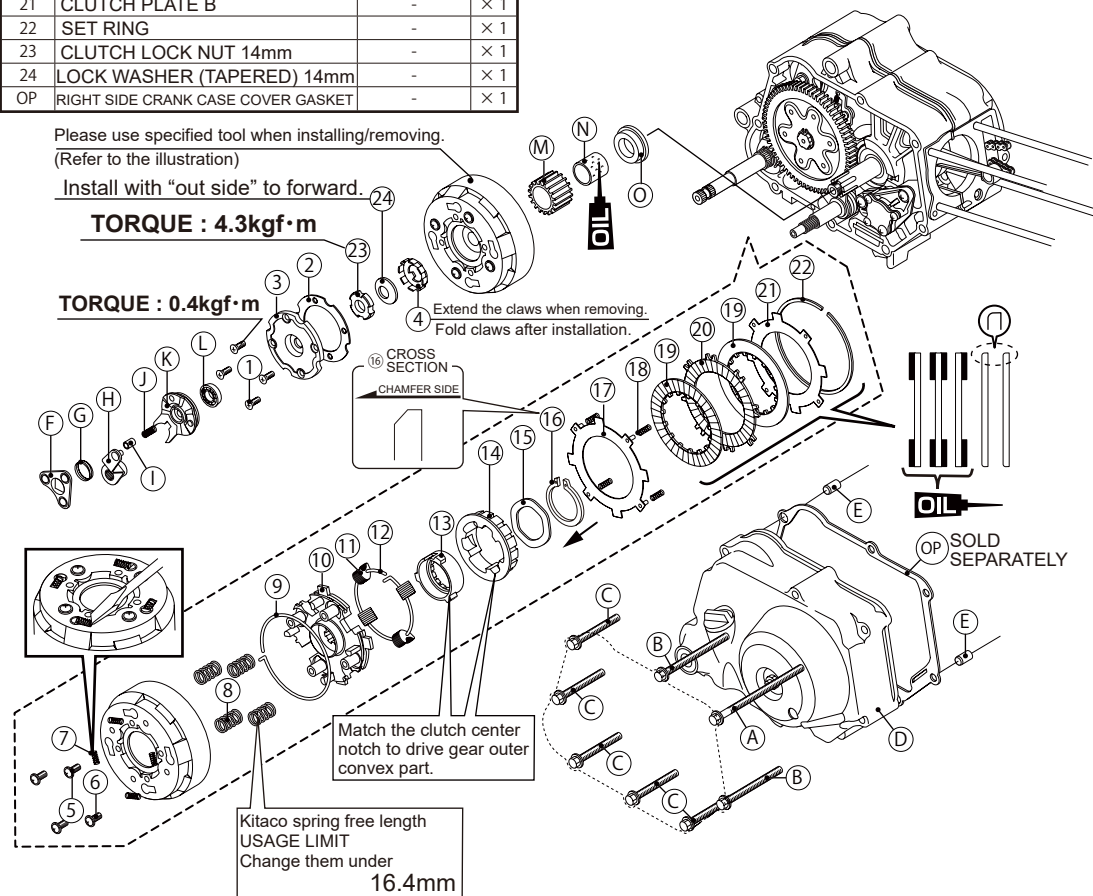
- Apply engine oil.
- ※ If there is a hard degradation like a blem, wear etc on the normal parts, please change to new ones.

Please use specified tool when installing/removing.
(Refer to the illustration)

Install with "out side" to forward.

TORQUE : 4.3kgf·m

TORQUE : 0.4kgf·m



160705 E-T

KITACO
株式会社 三ツコ
3-8-13 NAGATA,
HIGASHI-OSAKA,
OSAKA, JAPAN

CLUTCH KIT AUTO CLUTCH

NO.2 /2

● HOW TO INSTALL

※ Refer to the manufacturer service manual when disassemble, assemble and adjusting.

R CRANK CASE COVER REMOVING

1, Remove drain bolt to drain engine oil completely. Then remove kick pedal to remove R crank case cover.

*The parts might be stuck to gasket connecting section, remove all of them with scraper, etc. Be careful not to scratch.

*Please change gasket and seal to new one.

CLUTCH OUTER COVER REMOVING

2, Remove clutch lever, etc to remove clutch outer cover.

*Please use clutch outer holder (specified tool) when removing clutch outer cover + screw.

*The parts might be stuck to gasket connecting section, remove all of them with scraper, etc. Be careful not to scratch.

CLUTCH ASSY REMOVING

3, Up the lock washer (claw) by using thin (-) driver, etc that hook to lock nut before removing center lock nut. Stable by using clutch outer holder (specified tool). Then remove lock nut (claw/tapered) by using center lock nut wrench (specified tool) to remove clutch Assy.

INSTALLING

1, Install Kitaco clutch Assy referring to illustration.

*Clutch Assy is assembled. However, please check and additional tightening to bolts before installation.

*In case of difficult to insert clutch Assy to crank shaft deeper, please insert with primary drive gear together.

2, Tighten with attached lock washer, reuse normal lock washer B and nut together following specified torque.

*Install lock washer (tapered) with [OUT SIDE] mark to forward.

*Fold lock washer (claw) nail and install to lock nut notch.

*Stable by using clutch outer holder (specified tool) and tighten lock nut by using center lock nut wrench (specified tool).

3, Put the removed parts back together and pour specified amount of engine oil to finish installation. Make sure not to leak any oil.

▼ HOW TO REMOVE CENTER LOCK NUT

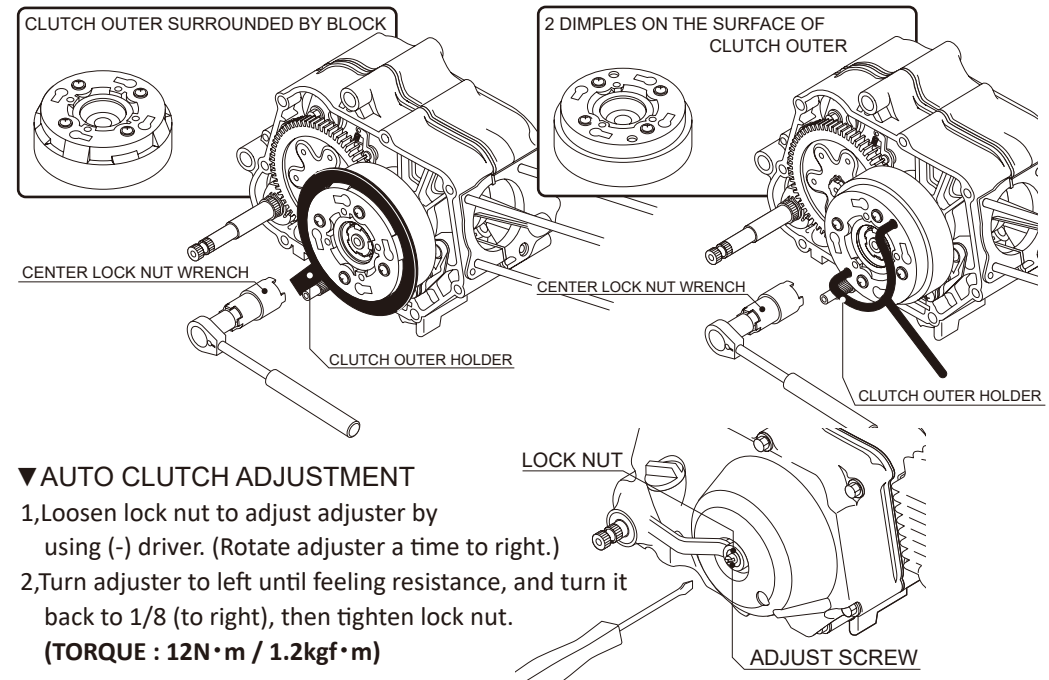
1, Up the lock washer (claw) by using thin (-) driver, etc that hook to lock nut before removing center lock nut.

2, Stable by using clutch outer holder (specified tool). Then remove lock nut (claw/tapered) by using center lock nut wrench (specified tool).

*Uses HONDA OEM tool clutch outer holder on the illustration.

*Clutch outer shape is different from models and year, usable clutch outer holder is also different.

*There are some ways to install/remove center lock nut as temporarily install fly wheel to stop rotate by universal holder, etc. Able to remove/install locknut using center lock nut wrench only if clutch stops rotating.



▼ AUTO CLUTCH ADJUSTMENT

1, Loosen lock nut to adjust adjuster by using (-) driver. (Rotate adjuster a time to right.)

2, Turn adjuster to left until feeling resistance, and turn it back to 1/8 (to right), then tighten lock nut.

(TORQUE : 12N·m / 1.2kgf·m)