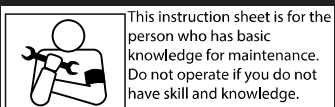


SUPER OIL COOLER KIT [3/5 ROW] UP type No.1/2		
CODE	(3 ROW) 360-1432100	(5 ROW) 360-1432110
APPLICATION	GROM (JC61/75) ※ For Kitaco clutch cover kit or Kitaco cylinder (able to take oil out) installed vehicle.	
REMARK	It is need to remove genuine air cleaner. Please use UNI FILTER KIT (515-1432100). Recommend to blowby gas crank case breather hose to deal with oil catch tank, breather filter, etc.	

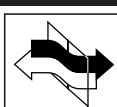
● Thank you for purchasing Kitaco product. Read and understand the instruction before installing.

ATTENTION (MUST READ)

- This product is for racing use only. Use this product with your responsibility.
 - This product is to cool engine oil to avoid heating troubles to cause performance decrement.
 - We are not responsible for damages and accidents caused by assembling mistake and improper setting.
 - Do not modify the way which is not listed or it will cause damage and trouble.
 - Please ask authorized mechanic for assembling and setting. Ask a specialist at specialty shop if you do not understand the role of the surrounding parts.
 - Refer to the manufacturer HONDA service manual when installation.
 - Bolts and nuts may get loosen by engine vibration.
 - SUPER OIL COOLER KIT is designed and made exclusive for application vehicles, do not use on other models.
- ※ Metal / resin / alumite products get discolored / rust for ages as well as how to use. Please understand when using.



This instruction sheet is for the person who has basic knowledge for maintenance. Do not operate if you do not have skill and knowledge.



Toxic, highly-volatile gasoline is used during operation. Be sure to ventilate the room. Do not operate for hours in a hermetically closed room.



FLAMMABLES
Inflammable high oil is used during operation. The use of products causing fire or smoke is strictly prohibited.



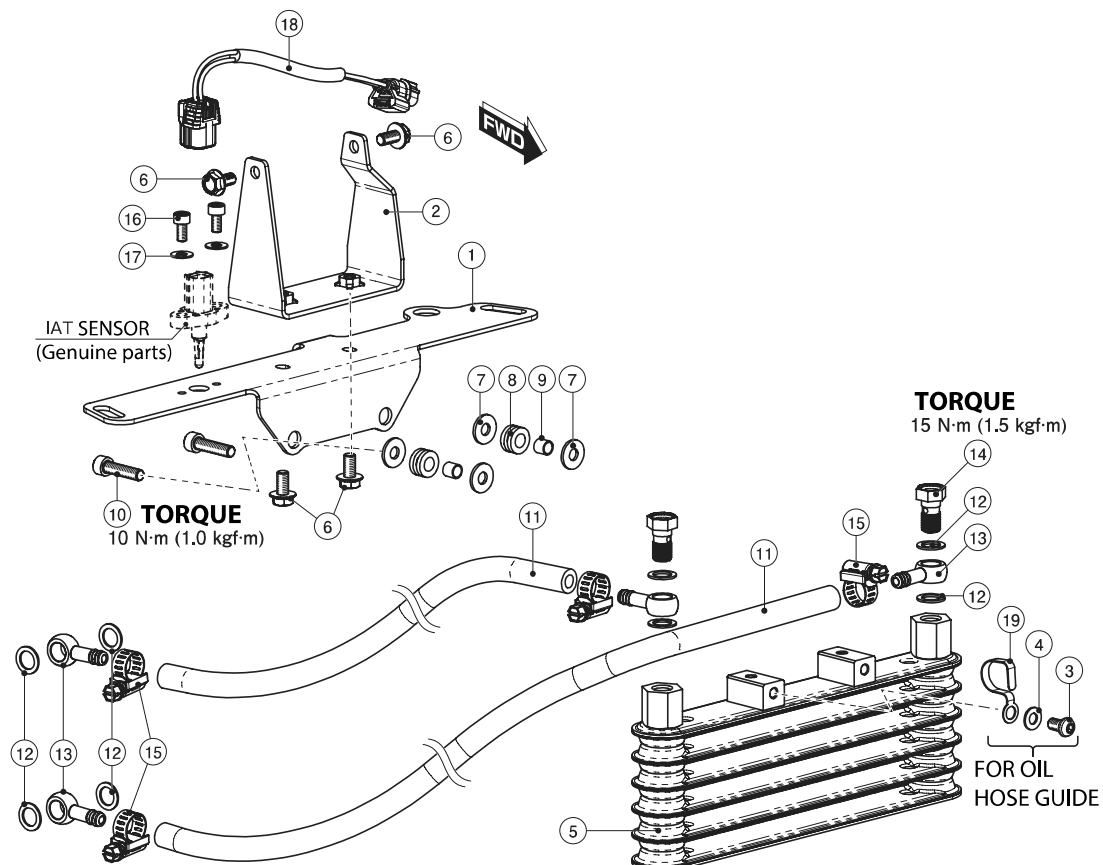
Don't touch cylinder, crankcase, muffler, etc right after engine operation. Make sure to start the installation after the engine parts are completely cool.



Do not check the sparking of spark plug outside of the cylinder. There are dangerousness of explosion.

PACKING LIST (Refer to the figure & illustration when installing)				3MC	5MC
FIGURE	NAME	CODE	QTY		
1	SHROUD STAY A	403-1432900	x1	x1	
2	SHROUD STAY B	403-1432910	x1	x1	
3	BUTTON CAP BOLT	M6x10	060-0550010	x1	x1
4	FLAT WASHER	6x13x1.0mm	090-0900006	x1	x1
5	OIL COOLER	(3 ROW CONDENSER)	360-0500100	x1	-
		(5 ROW CONDENSER)	360-0500200	-	x1
6	FLANGE HEXAGON BOLT	M6x12	062-0561012	x4	x4
7	FLAT WASHER	6.5x16x1.6mm	090-0907006	x4	x4
8	GROMMET	7.5x9x14x7T	752-9999099	x2	x2
9	GROMMET COLLAR	6.2x7.5xL7	093-0900003	x2	x2
10	CAP BOLT	M6x25	060-0500025	x2	x2
11	OIL HOSE	100mm	991-0000100	x1	x1
12	ALUMINUM SEALING WASHER	10mm	771-0500999	x8	x8
13	UNION NIPPLE (BLACK)	M10/6mm HOSE	990-0900901	x4	x4
14	ALUMINUM BANJO BOLT (RED)	M10xP1.25	771-0900900	x2	x2
15	HOSE BAND	Φ 8 ~ 12	995-0500012	x4	x4
16	CAP BOLT	M5x10	050-0500010	x2	x2
17	FLAT WASHER	5x12x1.0mm	090-0900005	x2	x2
18	IAT EXTENTION HARNESS	FOR INTAKE AIR TEMPERATURE SENSOR	515-1300103	x1	x1
19	HARNESS CLIP		0900-751-09002	x1	x1
-	MS TIE (BLACK)	152x3.5	700-9200152	x4	x4

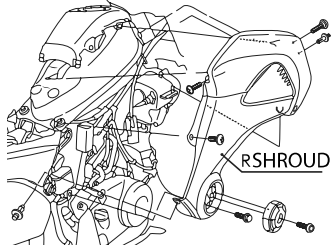
※ Basically, reuse genuine parts if it is not attached. If there is a hard degradation like a blem, fatigue and wear etc on the reuse parts, please change to new ones.
 ※ Refer to the instruction sheet No.2 how to install.



SUPER OIL COOLER KIT [3/5 ROW] UP type No.2/2		
CODE	(3 ROW) 360-1432100	(5 ROW) 360-1432110
APPLICATION	GROM (JC61/75) ※ For Kitaco clutch cover kit or Kitaco cylinder (able to take oil out) installed vehicle.	
REMARK	It is need to remove genuine air cleaner. Please use other UNI FILTER KIT (515-1432100). Recommend to blowby gas crank case breather hose deal with oil catch tank, breather filter, etc.	

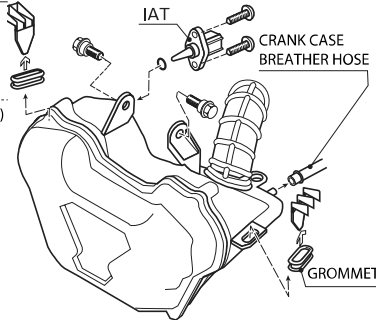
REMOVING AIR CLEANER CASE AND SURROUNDING PARTS

1-1 Referring to service manual, remove L/R shroud stay with being careful not to break cover craw. (illustration is on right side.)



1-2 Remove air cleaner case. Then, remove intake air temperature (IAT) sensor and crank case breather hose from air cleaner case.

※ Reuse a part of intake air temperature (IAT) sensor and grommet.



OIL COOLER STAY INSTALLATION 1

2-1 Install (shroud) stay for condenser to air cleaner case installation place with attached bolt.
TORQUE : 10 N·m (1.0 kgf·m)

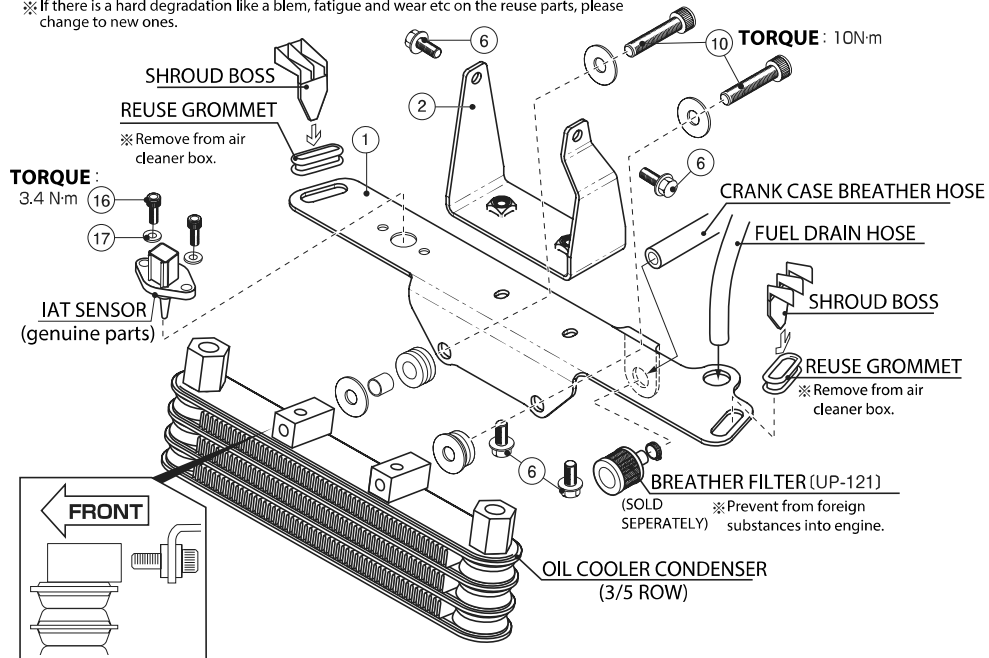
2-2 Assemble intake air temperature (IAT) sensor to condenser stay, then connect extension harness.

TORQUE : 3.4 N·m (0.3 kgf·m)

SHROUD STAY NET ILLUSTRATION

Illustration only shows shroud stay parts and relating genuine parts. Other parts are abbreviated.

※ If there is a hard degradation like a blem, fatigue and wear etc on the reuse parts, please change to new ones.

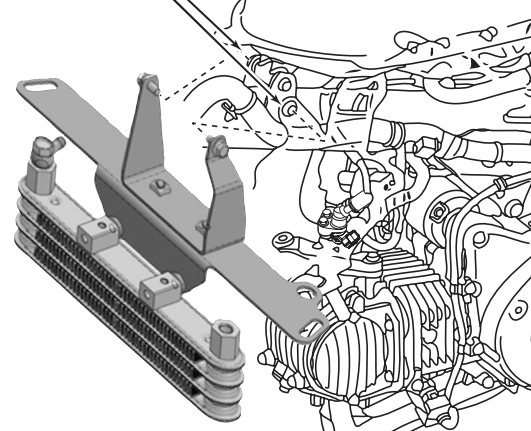


OIL COOLER STAY INSTALLATION 2

2-3 A part of L/R shroud and oil cooler condenser are interrupting each other, please cut and remove shroud interrupt part.

SHROUD STAY INSTALLATION PLACE

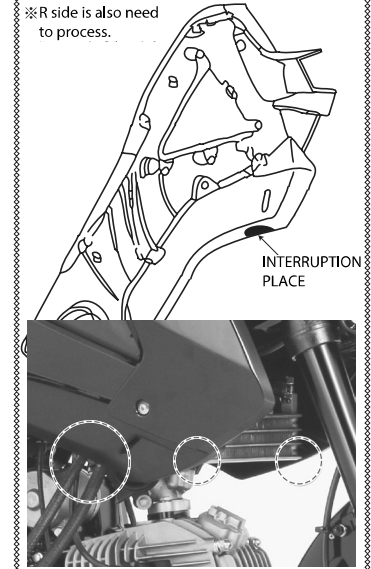
Air cleaner case installation place ※ Remove genuine air cleaner case.



L/R SHROUD INTERRUPTION PLACE

Illustration is JC61 model L side shroud

※ R side is also need to process.



OIL COOLER INSTALLATION

3-1 Install attached union nipple/bolt and aluminum washer temporarily.

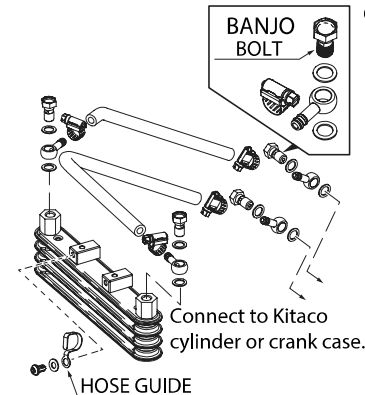
3-2 Cut the oil hose after decide installation place, then connect to oil take point. Rotate oil hose not to touch exhaust and engine.
BANJO BOLT TORQUE : 15 N·m (1.5 kgf·m)

※ Avoid oil hose from interruption with attached hose guide or tie wrap.

⚠ Add engine oil the **additional amount (75~100cc)+specified amount.**

(OPTION PARTS) HOSE SEPARATOR

RED	993-9000020
BLACK	993-9000050
SILVER	993-9000060



HOW TO TAKE OUT KITACO CYLINDER / CLUTCH COVER OIL LINE

● Remove oil gallery from oil line, then change to attached oil nipple and aluminum washer.

● Tighten bolts and nuts with written specified torque.

※ If there is a hard degradation like a blem, fatigue and wear etc on the reuse parts, please change to new ones.

※ Tighten bolts and nuts with written specified torque.

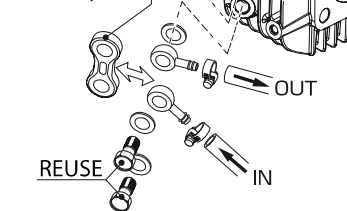
TORQUE		
NAME	QTY	N·m(kgf·m)
BANJO BOLT (REUSE)	2	15 (1.5)

KITACO CYLINDER

※ Arrows inside illustration is oil cooler line.

OIL GALLERY

(Attached cylinder)



ATTENTION WHEN USING

※ When starting engine, do not rev up for a while. Need to rotate oil with idling because there is time lag for oil cooler amount to rotate oil around cylinder head.

230224 M-T