

BIG THROTTLE BODY Ø34 / LARGE CAPACITY DCP INJECTOR (RACE USE ONLY)

CODE	(BIG THROTTLE BODY) 111-2416000	(DISCHARGE PUMP INJECTOR) 403-0700000
APPLICATION	ADDRESS V125 / -G (K9) CF4EA / (L0) CF4MA *CF46A (K5~7) NOT USABLE.	
	STOCK AIR CLEANER USABLE	STOCK THROTTLE BODY USABLE
IMPORTANT! ATTENTION WHEN USING	For using this product, mixture adjustment (fuel control) by injection controller is required. Please use injection controller (i-map) sold separately or other company's sub controller to improve condition below. (By using i-map or other company's sub controller to improve condition below, not it would not be applicable.)	
	By enlarge throttle body, please use large capacity discharge pump sold separately. If using stock discharge with big throttle, mixture (fuel control) is weaker than stock by throttle opening is more than 30%, more weaker with big bore, it might cause of engine break.	
	If using large discharge pump injector (DCP) with stock engine, all mixture (fuel control) is too rich and cause of trouble.	

• Thank you for purchasing Kitaco product. Read and understand the instruction before installing.

ATTENTION (MUST READ)

- The product improves intake, output, etc. to bring out engine performance. By installing this product, setting to match the characteristic is required. If ride with wrong setting, it might cause of decrease performance, burning and break. Be careful of it.
- This product is designed for the vehicle with big bore (Kitaco big bore kit), high camshaft, racing muffler, depending on how much tuned. Setting might not appear with stock bore.
- This product is race use only. Cannot ride general public road with installed vehicle.
- We are not responsible for violation of law or damages and accidents caused by assembling mistake and improper setting.
- Please ask authorized mechanic for assembling and setting. Ask a specialist at specialty shop if you do not understand the role of the surrounding parts.
- Refer to the manufacturer service manual when installation.
- Bolts and nuts may get loosen by engine vibration. Make sure not to loosen any bolts and nuts before driving.



FLAMMABLES
Inflammable high gasoline is used during operation. Smoking, etc is prohibited.



Do not touch cylinder, crank case, exhaust pipe, etc during and right after engine operation because of its high heat.



This sheet is intended for the person who has basic knowledge for maintenance. Do not operate if you do not have skill and knowledge.



Toxic, high-volatile gasoline is used during operation. Be sure to ventilate the room. Do not operate for hours in a hermetically closed room.

PACKING LIST *() is 1SET QTY.

FIGURE	NAME	CODE	QTY
1	THROTTLE ASSY	403-2416000	× 1
2	O RING (39.7 x 2.4)	967-0900003	× 1
-	MANIFOLD SET (34mm)	410-2416000	1
3	MANIFOLD MAIN UNIT	100-2416000	(× 1)
4	INSULATOR RUBBER SEAL	955-2416000	(× 2)
5	INSULATOR	999-2416000	(× 1)

OPTION PARTS (Please purchase in necessary)

FIGURE	NAME	CODE	REMARK
OP1	DISCHARGE PUMP (MIKUNI)	403-0700000	INTAKE
-	"i-map" INJECTION CONTROLLER	763-2415000	ELECTRIC

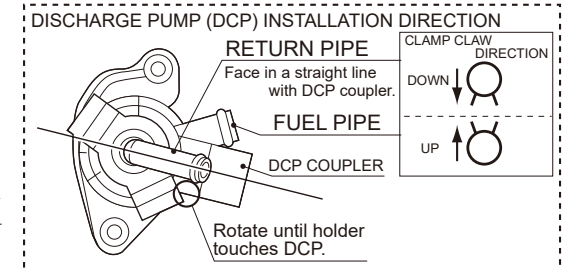
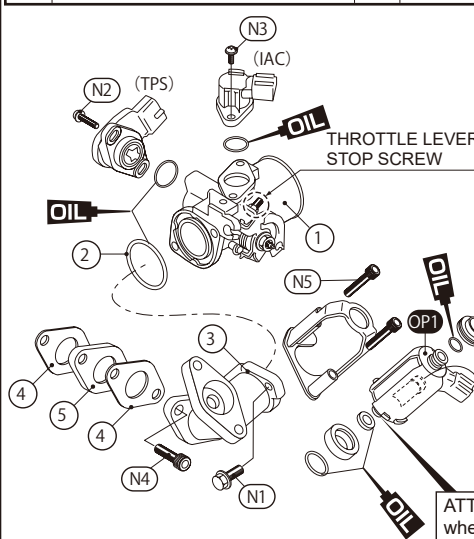
HOW TO INSTALL

This instruction sheet is for the vehicle with light big bore kit or big bore kit installed vehicle.

Mixture adjustment (fuel injection) by injection controller is required.

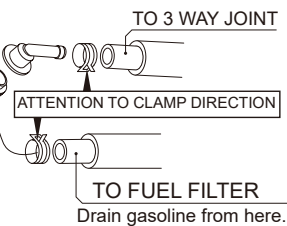
- 1) Drain the all gasoline of fuel tank from fuel hose (fuel filter side) that connected to discharge pump (DCP).
*When draining gasoline, gasoline will spill, please catch by saucer, etc.
- 2) Remove hose, coupler of DCP 3 way joint side, then remove DCP from throttle body.
- 3) Remove throttle position sensor (TPS) / idle air control solenoid valve (IAC), etc, then remove vacuum hose from manifold body.
- 4) Remove throttle cable holder from throttle body, then remove throttle cable end.
* After removing throttle cable, Do not close throttle cable suddenly from full opening. It might break throttle valve and throttle main unit.
* Throttle lever stop screw (O below) is set when shipping, do not rotate if there is no need.
- 5) Install big throttle body and attached manifold set.
- 6) After installing attached parts and reuse stock parts, continue to full open and close throttle to make sure throttle valve moves smoothly.
- 7) Make sure not to leak gasoline and turn engine on to blow up correctly.
* The setting is different depending on how much tuned, please set referring to injection controller (sub controller, etc).

TORQUE			
FIGURE	NAME	QTY	N · m
N1	THROTTLE BODY MOUNTING BOLT	× 2	10
N2	TPS MOUNTING SCREW	× 2	2
N3	IAC VALVE SCREW	× 2	2
N4	INTAKE PIPE MOUNTING BOLT	× 1	6.5
N5	DCP HOLDER BOLT	× 2	5 ~ 10



HOW TO DEAL WITH DISCHARGE PUMP INJECTOR (DCP)

Do not enter dust, etc to fuel pipe and return pipe. In case the dust, etc enter, the pump stuck and cause of operation failure.



ATTENTION! Do not push DCP tip when installing / removing.