

FRONT DISC BRAKE KIT No.1/5

CODE	BLUE R SIDE : 500-1439110	GREEN R SIDE : 500-1439140	BEIGE R SIDE : 500-1439190
APPLICATION	SUPER CUB110 (JA44)		

Thank you for purchasing Kitaco product. Read and understand the instruction before installing.

ATTENTION (MUST READ)

- This product increases braking force. After installing, brake feeling and stability is different from stock. Be careful of riding.
- This product is designed and made exclusive for application model, do not use other models. Do not modify the way which is not listed or it will cause damage and trouble.
- We are not responsible for violation of law or damages and accidents caused by assembling mistake and improper setting.
- Please ask authorized mechanic for assembling and setting. Ask a specialist at specialty shop if you do not understand the role of the surrounding parts.
- Refer to the manufacturer service manual when installation.
- Bolts and nuts may get loosen by engine vibration. Make sure not to loosen any bolts and nuts before driving.
- Make sure brake effectiveness or anything wrong to brake surrounding before riding.
- This instruction sheet is for the instruction for stock condition.
- Brake pad, disc rotor and brake fluid is consumables. Do not over usage limit and please change new one if it is deteriorated.
- Please do degassing of brake fluid regularly.



If there is trouble on brake and related parts may cause of big accident immediately. Handle with extreme care.



Do not modify the way which is not listed or it will cause damage and trouble.



This instruction sheet is for the person who has basic knowledge for maintenance. Do not operate if you do not have skill and knowledge.



The license is not required for some brake maintenance, but operating by beginner is prohibited. Ask mechanic if you do not have skill and knowledge.

Please use consumable parts below when installing.

BRAKE FLUID	DOT3 or DOT4
SEALING WASHER	BANJO / ALUMINUM WASHER (2PCS) 0900-771-90001
OPTION PARTS	
BRAKE PAD	SBS 925 SERIES (TYPE : HF / RSI)

*Basically, reuse genuine parts if it is unattached. If there is a hard degradation like a blem, fatigue and wear etc on the reuse parts, please change to new ones.

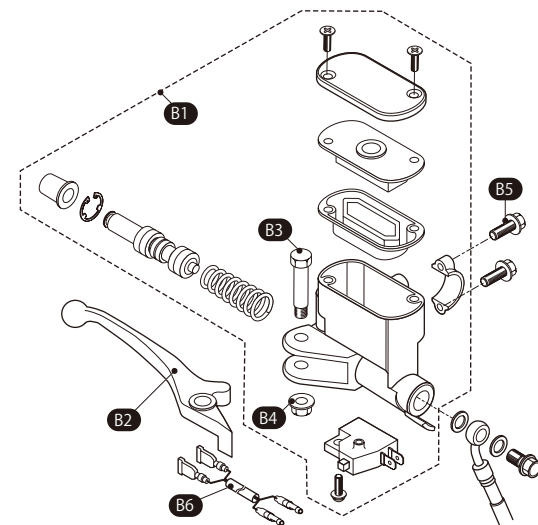
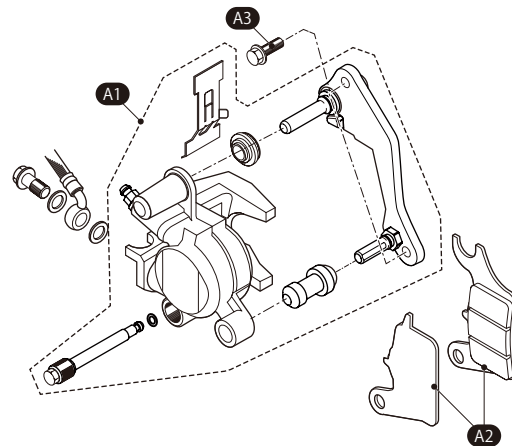
*Refer to the No.3 for installation.

BRAKE CALIPER PARTS

FIGURE	NAME	CODE	QTY
A1	CALIPER ASSY FRONT	500-1446001A	1
A2	BRAKE PAD 925RSI	777-0925077	1
A3	FLANGE HEXAGON BOLT M8x22	500-1439013	2

MASTER CYLINDER PARTS

FIGURE	NAME	CODE	QTY
B1	MASTER CYLINDER SUB ASSY FRONT C110	500-1439011	1
B2	BRAKE LEVER R	525-1432002	1
B3	HANDLE LEVER PIVOT M6 BOLT	500-1446004	1
B4	FLANGE LOCK NUT M6-P1.00	001-0550006	1
B5	FLANGE SH (HEXAGON) BOLT M6x22 (BLACK)	500-1446005	2
B6	BRAKE SWITCH HARNESS C110	500-1439016	1



BRAKE HOSE PARTS

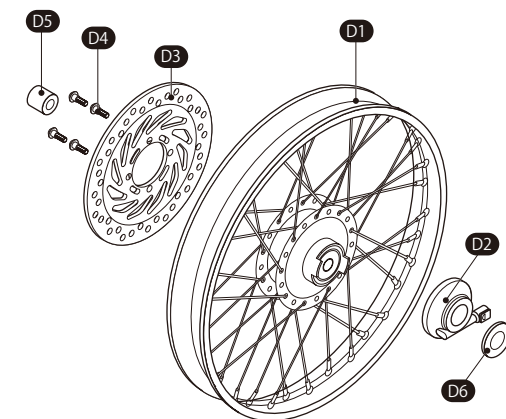
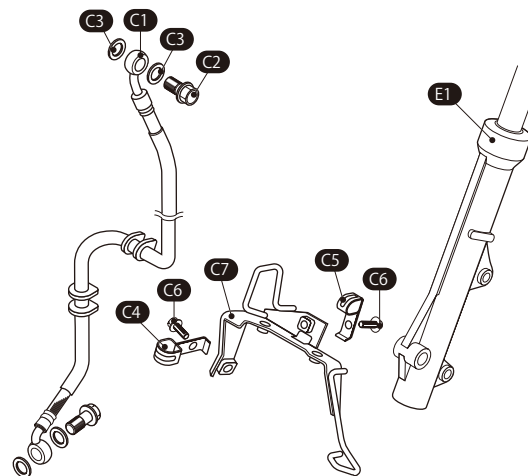
FIGURE	NAME	CODE	QTY
C1	BRAKE HOSE comp FRONT C110	500-1439010	1
C2	BANJO BOLT M10x22	500-1446007	2
C3	ALUMINUM WASHER BANJO BOLT	771-0500999	4
C4	BRAKE HOSE CLAMPER (K)	500-1439008	1
C5	(T)	500-1439009	1
C6	FLANGE HEXAGON BOLT M6x12	062-0561012	4
C7	SPEED METER CABLE GUIDE	500-1439007	1
C8	TIE WRAP 100x2.5mm	700-9200100	2

FRONT WHEEL / DISC ROTOR PARTS

FIGURE	NAME	CODE	QTY
D1	WHEEL ASSY FRONT	500-1446011	1
D2	SPEED METER GEAR BOX ASSY	500-1439014	1
D3	DISC ROTOR FRONT	500-1446013	1
D4	ROTOR BOLT (K) M8x24	500-1446014	4
D5	AXLE COLLAR C110	500-1439015	1
D6	SPACER SHIM 12.5x26xT0.5	090-0601125	1

FRONT FORK PARTS

E1	FRONT FORK ASSY R SIDE	500-1439012	1
----	------------------------	-------------	---



FRONT DISC BRAKE KIT No.2/5

APPLICATION : SUPER CUB110 (JA44)

CODE	BLUE R SIDE : 500-1439110	GREEN R SIDE : 500-1439140	BEIGE R SIDE : 500-1439190
------	---------------------------	----------------------------	----------------------------

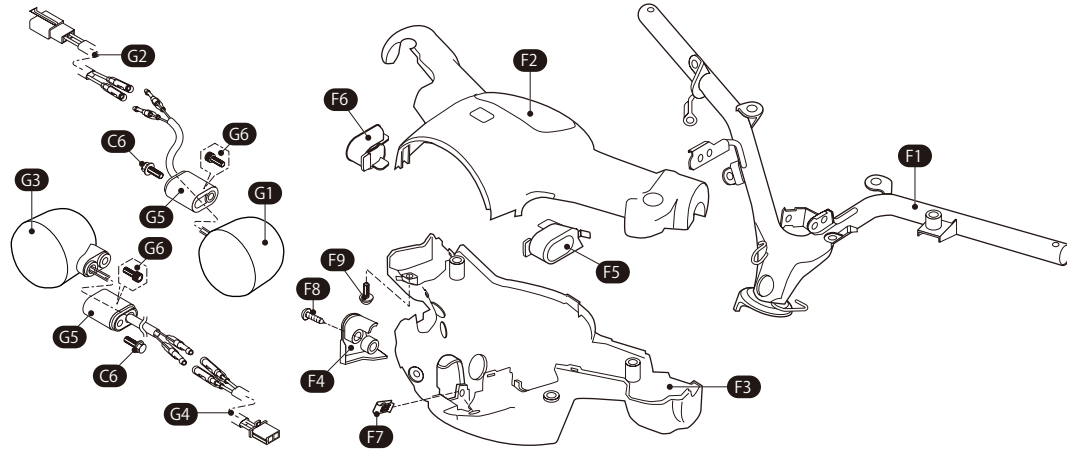
HANDLE / OUTER PARTS

FIGURE	NAME	CODE	QTY
F1	HANDLE PIPE comp	500-1439001	1
F2	HANDLE COVER UPPER *(BL/GN/BG)	500-1439002(*)	1
F3	HANDLE COVER LOWER *(BL/GN/BG)	500-1439003(*)	1
F4	HANDLE LOWER LID	500-1439004	1
F5	L WINKER RUBBER	500-1439005	1
F6	R WINKER RUBBER	500-1439006	1
F7	CLIP NUT 4mm	059-0000040	1
F8	TRUSS SCREW M4x16	046-0592016	1
F9	HINGE PATCH SCREW	500-1439022	1

WINKER PARTS

FIGURE	NAME	CODE	QTY
G1	WINKER ASSY L FRONT	500-1439019	1
G2	WINKER CONVERT HARNESS L	500-1439017	1
G3	WINKER ASSY R FRONT	500-1439020	1
G4	WINKER CONVERT HARNESS R	500-1439018	1
G5	WINKER STAY FRONT	500-1439021	2
G6	CAP BOLT M6x12	060-0500012	2

*Basically, reuse genuine parts if it is unattached. If there is a hard degradation like a blem, fatigue and wear etc on the reuse parts, please change to new ones.
*Refer to the instruction below to install.



DISASSEMBLE : REMOVE OUTER COWLS

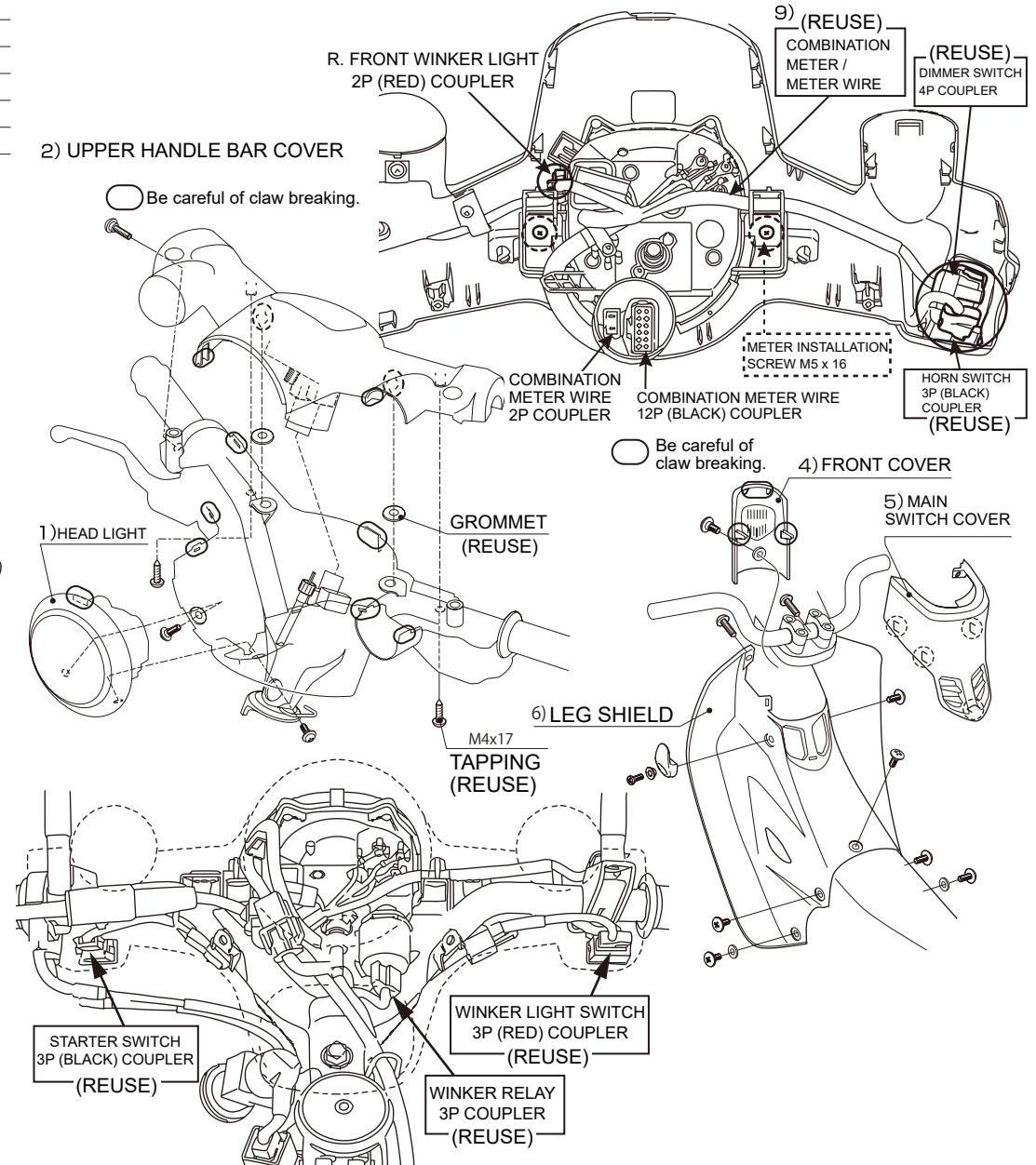
OUTER COWLS REMOVING ORDER	
1 ↓	HEAD LIGHT
2	UPPER HANDLE BAR COVER
3	CENTER COVER
4	FRONT COVER
5	MAIN SWITCH COVER
6	LEG SHIELD
7	SIDE COVER
8	BODY COVER
9	COMBINATION METER

ATTENTION!

●REMOVING / INSTALLING COVERS

*Removing / installing outer cowls are required to install this product. Refer to the manufacturer service manual when installation.

COMBINATION METER BACK SIDE :



FRONT DISC BRAKE KIT No.4/5

APPLICATION : SUPER CUB110 (JA44)

CODE BLUE R SIDE : 500-1439110 GREEN R SIDE : 500-1439140 BEIGE R SIDE : 500-1439190

INSTALLING R SIDE FRONT FORK

- 1-1 Tighten front fork (E1) to fork top bridge with upper / lower mount bolt.
TORQUE : 68 N·m (6.8 kgf·m)

ASSEMBLE CALIPER (SUPPORT)

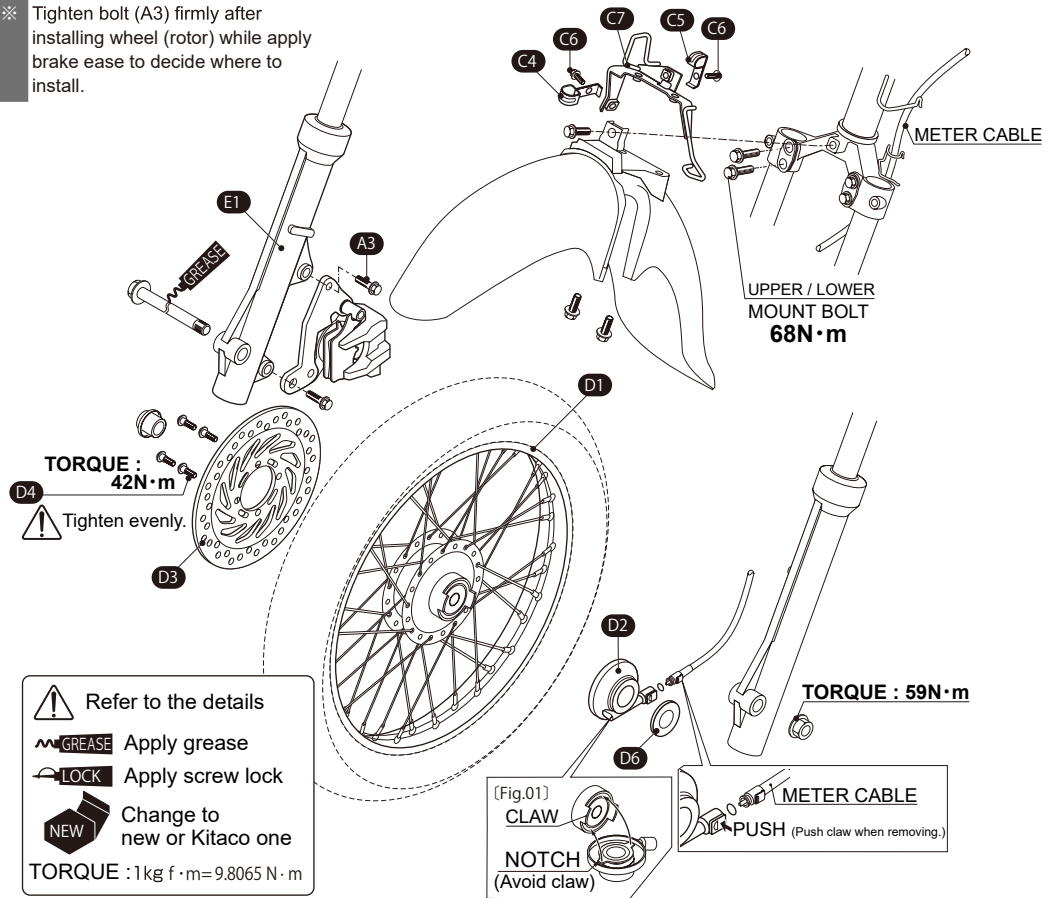
- 1-2 Install brake caliper ASSY (A1) to (E1) right bottom case side with installation bolt M8 x 22 (A3) temporarily.
※ Tighten bolt (A3) firmly after installing wheel (rotor) while apply brake ease to decide where to install.

ASSEMBLE DISC WHEEL / ROTOR

- 2-1 Install brake rotor to front wheel.
⚠ Tighten rotor bolt diagonally alternately evenly.
TORQUE : 42 N·m (4.2 kgf·m)
※ Install speed meter gear box protrusion avoid to front wheel claw. [Fig.01]

- 2-2 Insert stock speed meter cable to attached speed meter gear box with matching its shape.
※ Layout cable as same as stock route.

Disc wheel kit parts and related stock parts are listed. Other parts are omit.



⚠ Refer to the details

GREASE Apply grease

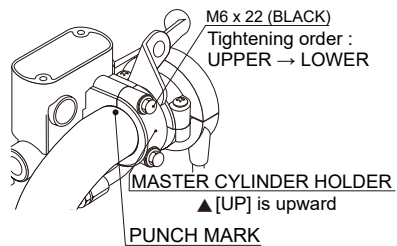
LOCK Apply screw lock

NEW Change to new or Kitaco one

TORQUE : 1kg f · m=9.8065 N · m

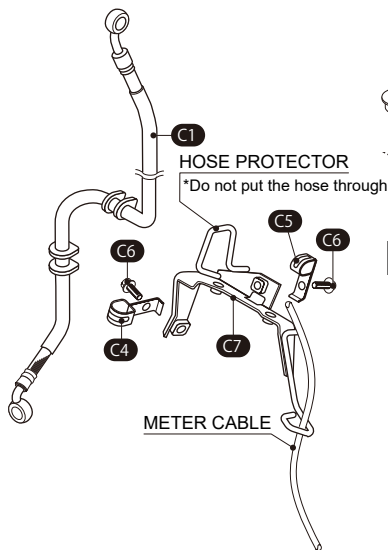
INSTALL FRONT MASTER CYLINDER

- 1-1 Install master cylinder holder with [UP] to upward.
Match master cylinder holder matching part and handle bar punch mark (upper part) and tighten upper bolt → lower bolt order.
TORQUE : 10 N·m (1.0 kgf·m)



INSTALL BRAKE HOSE

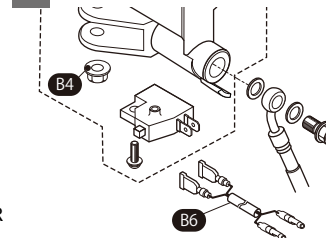
- 1-2 Fix brake hose (C1) to meter cable guide (C7) with attached hose clammer (C4).



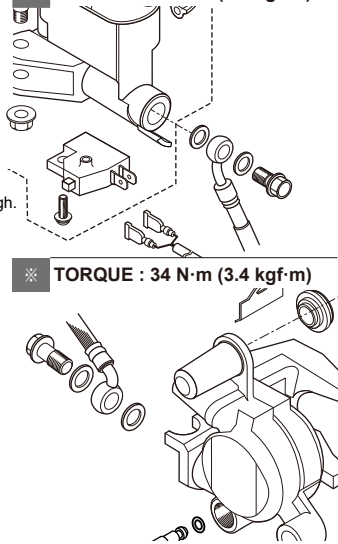
DEGASSING / ADJUST

- 1-1 Apply brake fluid to front brake oil pressure system to release air.

- 1-2 Connect attached (B6) brake switch harness.



- 1-3 Install brake hose to master cylinder and caliper.
※ **TORQUE : 34 N·m (3.4 kgf·m)**



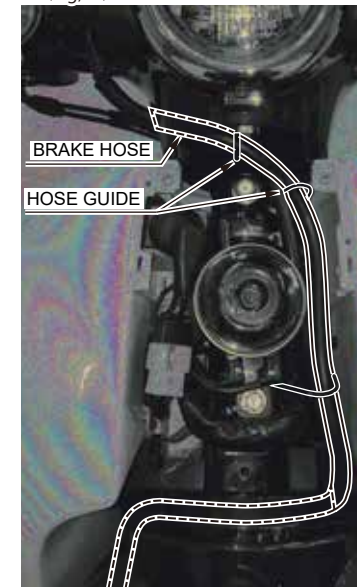
- 1-2 Tighten brake caliper assy (A1) temporarily tightening bolts M8 x 22 (A3) firmly.
※ Tighten firmly while apply brake ease to decide where to install.

Put the removed outer cowls back.

INSTALL BRAKE HOSE (LAYOUT)

- 1-1 Insert brake hose to handle lower lid (F4) and hose guide as [Fig.01].

[Fig.01]



FRONT DISC BRAKE KIT No.5/5

APPLICATION : SUPER CUB110 (JA44)

CODE	BLUE R SIDE : 500-1439110	GREEN R SIDE : 500-1439140	BEIGE R SIDE : 500-1439190
------	---------------------------	----------------------------	----------------------------

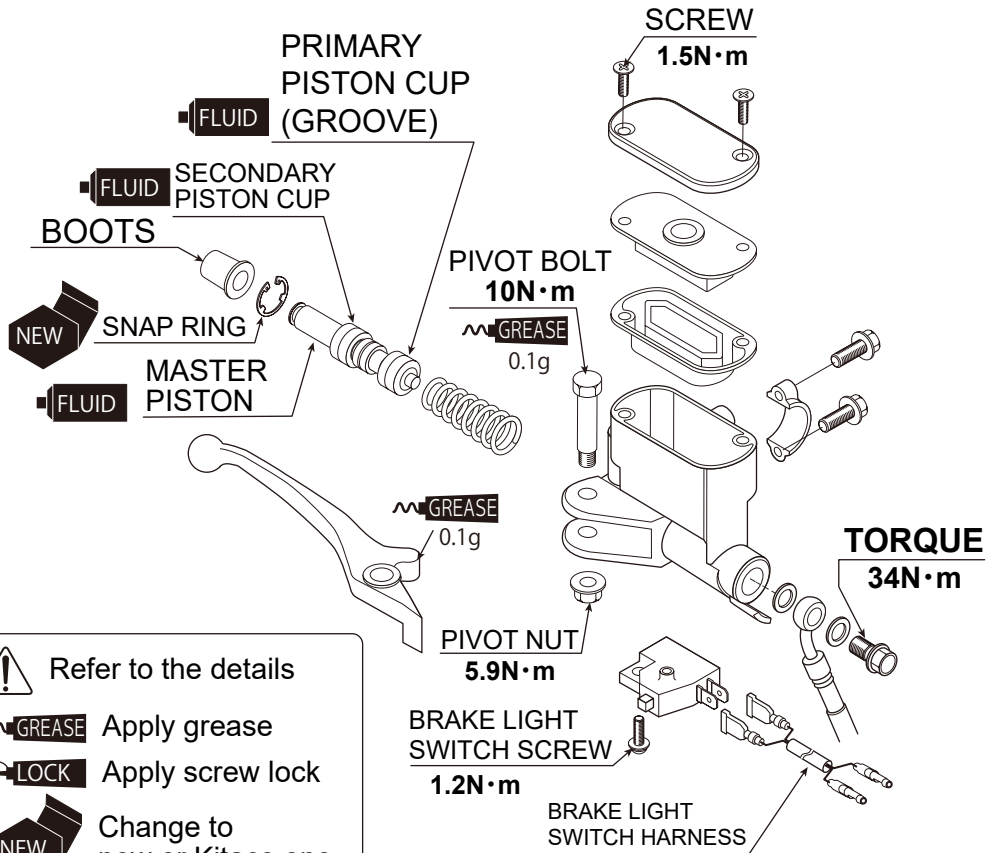
BRAKE MASTER / CALIPER MAINTENANCE ILLUSTRATION

*Basically, reuse genuine parts if it is unattached. If there is a hard degradation like a blem, fatigue and wear etc on the reuse parts, please change to new ones.

Refer to the illustration below to disassemble / assemble master cylinder

- ※ Use specified tool (snap ring plier) for removing / installing snap ring.
- ※ Be careful not to turn over the piston cup ring part.
- ※ Install snap ring chamfered side face to thrust load side and make sure ring seats to groove. (Reusing snap ring is prohibited because it might rotate on groove.)
- ※ Match switch boss and master cylinder hole. Tighten pivot nut while fixing pivot.

TORQUE : 5.9N·m (0.6kgf·m)



Refer to the details

Apply grease

Apply screw lock

Change to new or Kitaco one

TORQUE : 1kg f·m=9.8065 N·m

Refer to the illustration below to disassemble / assemble caliper.

- ※ Mark piston enables to put it back.
- ※ When removing caliper piston by compressor, cover piston by cloth prevent from damage by piston and caliper body. Do not make air to high pressure or do not air gun gets too close to inlet.
- ※ Install piston with opening part face to pad.
- **ADVICE WHEN CHANGING BRAKE PAD**
In case of changing brake pad to new one, push caliper body to inside to push caliper piston before removing pad. Must to change brake pad with left and right together.

