

HEEL PLATE	APPLICATION : MONKEY 125 (JB02/3)
CODE	
BLACK : 516-1300850	SILVER : 516-1300860

Thank you for purchasing Kitaco product. Read and understand the instruction before installing.

ATTENTION (MUST READ)

- This instruction sheet is for the instruction for genuine condition.
- This product is designed and made exclusive for application vehicles, do not use other models. Do not modify the way which is not listed or it will cause damage and trouble.
- We are not responsible for violation of law or damages and accidents caused by assembling mistake and improper setting.
- Please ask authorized mechanic for assembling and setting.
- Refer to the manufacturer service manual when installation.
- Bolts and nuts may get loosen by engine vibration. Make sure not to loosen any bolts and nuts before driving.
- ※ Metal/resin/alumite products get discolored/rust for ages as well as how to use. Please understand when using.

PACKING LIST	
NAME	QTY
HEEL PLATE	2

HOW TO TAKE CARE

ATTENTION WHEN INSTALLING AND USING!

- This product is for dress-up. Cannot perfectly prevent from scratch, etc. Do not use for other purposes.
- Heel plate might fall by vibration of riding, weather, and ages. Please understand before using.
- The seal cannot use again if sticking firmly.

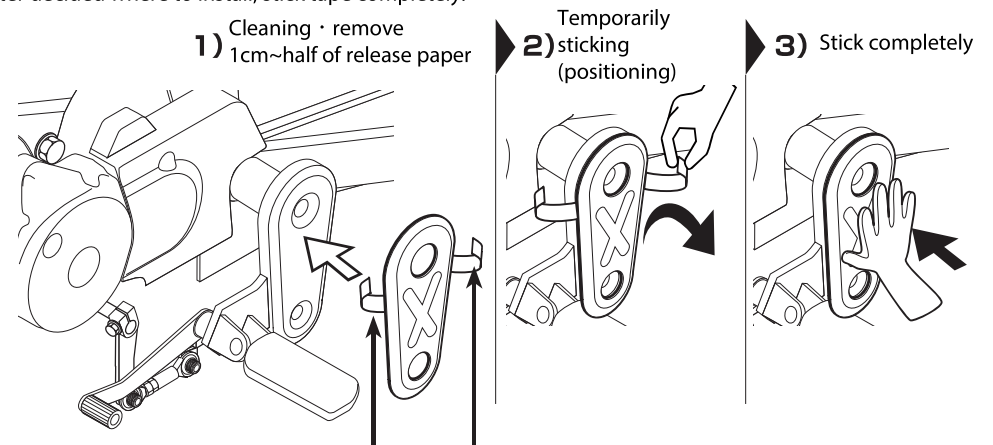
HOW TO STICK (The instruction below is just a reference.)

● READY FOR STICKING

- Please check where to stick before installing.
- Refer to the attentions below, install to step heel plate place by sticking double sided tape.

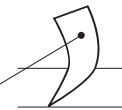
● HOW TO STICK PLATE

- 1) Wipe dust, grease, etc from sticking surface.
- 2) Remove 1cm~half of release paper to decide where to stick, then remove rest of release paper and stick it completely. (Be careful not to apply finger print and grease to sticking surface. Tape is strong so it might cause of break if you try replace after sticking firmly.)
- 3) After decided where to install, stick tape completely.



Remove release paper around 1cm of both ends, then bend to outside.

Remove all of release paper after positioning.



220131 T-M

KITACO
 株式会社 キットコ
 〒 577-0015
 3-8-13 NAGATA, HIGASHI-
 OSAKA, OSAKA, JAPAN