

PILLION STEP

APPLICATION	SUPER CUB C125 (JA48/58)	
CODE	(SILVER) 516-1310460	

● Thank you for purchasing Kitaco product. Read and understand the instruction before installing.

ATTENTION (MUST READ)

- This product is designed and made exclusive for application vehicles, do not use other models. Do not modify the way which is not listed or it will cause damage and trouble.
 - We are not responsible for violation of law or damages and accidents caused by assembling mistake and improper setting.
 - Please ask authorized mechanic for assembling and setting.
 - This instruction sheet is for the instruction for genuine condition. Refer to the manufacturer service manual when installation.
 - Bolts and nuts may get loosen by engine vibration. Make sure not to loosen any bolts and nuts before driving.
- ※ Metal/resin/alumite products get discolored/rust for ages as well as how to use. Please understand when using.

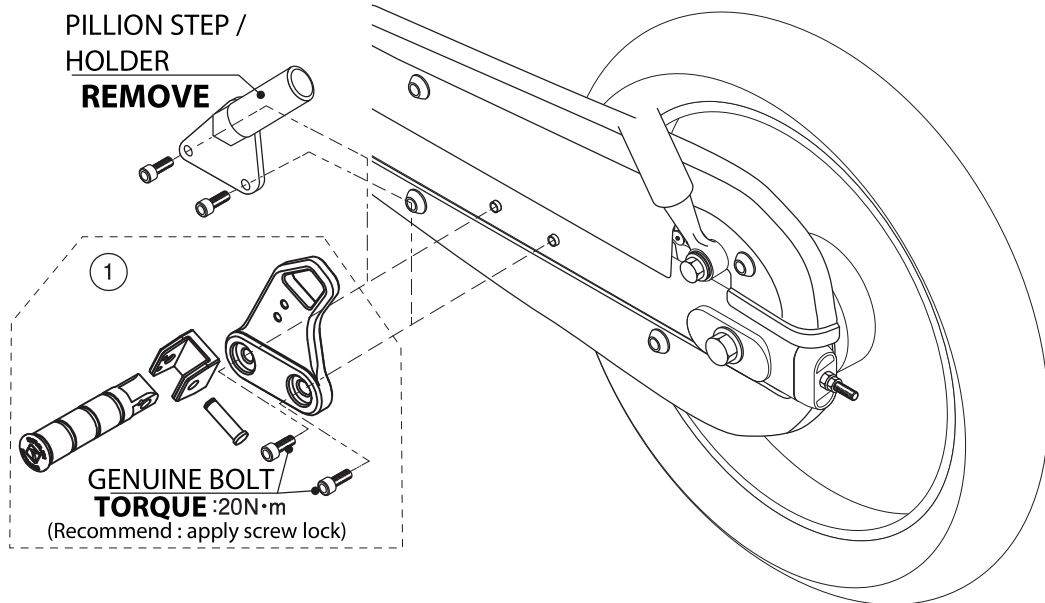
PACKING LIST			
FIGURE	NAME	CODE	QTY
1	PILLION STEP L	-	× 1
2	PILLION STEP R	-	× 1

HOW TO INSTALL

▼ Basically, reuse genuine parts if it is not attached. If there is a hard degradation like a blem, fatigue and wear etc on the reuse parts, please change to new ones.

- 1) Remove genuine pillion step.
- 2) Assemble Kitaco step bar Assy and base plate, then install Kitaco step.
- 3) Make sure not to loosen any parts before riding.

(Illustration is Super cub C125 L side, install as same as R side.)



210930 M-T

〒 577-0015
3-8-13 NAGATA, HIGASHI-
OSAKA, OSAKA, JAPAN

KITACO
株式会社 キタコ