

RETRACTABLE STEP KIT		APPLICATION : SUPER CUB110 (JA44)
CODE	516-1439000	
REMARK	*Stock side stand and stand rubber not usable. *This product side stand does not include stand rubber. Be careful not forgotten to return side stand before riding.	

Thank you for purchasing Kitaco product. Read and understand the instruction before installing.

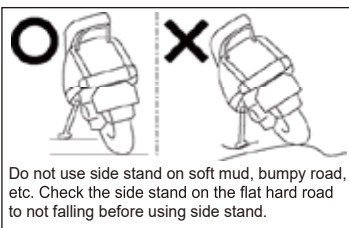
ATTENTION (MUST READ)

- By changing step to retractable, more convenient as delivery, etc. Do not use for other purposes.
- Step shape and structure are different from stock step. Please ride safely.
- This instruction sheet is for the instruction for stock condition. Refer to the manufacturer service manual when installation.
- This product is designed and made exclusive for application models, do not use other models. Do not modify the way which is not listed or it will cause damage and trouble.
- We are not responsible for violation of law or damages and accidents caused by assembling mistake and improper setting.
- Please ask authorized mechanic for assembling and setting. Ask a specialist at specialty shop if you do not understand the role of the surrounding parts.
- Bolts and nuts may get loosen by engine vibration. Make sure not to loosen any bolts and nuts before driving.
- ※ Metal/resin/alumite products get discolored/rust for ages as well as how to use. Please understand when using.

ATTENTION (MUST READ)

Incorrect installation, careless act might cause of accident. Be careful of it.

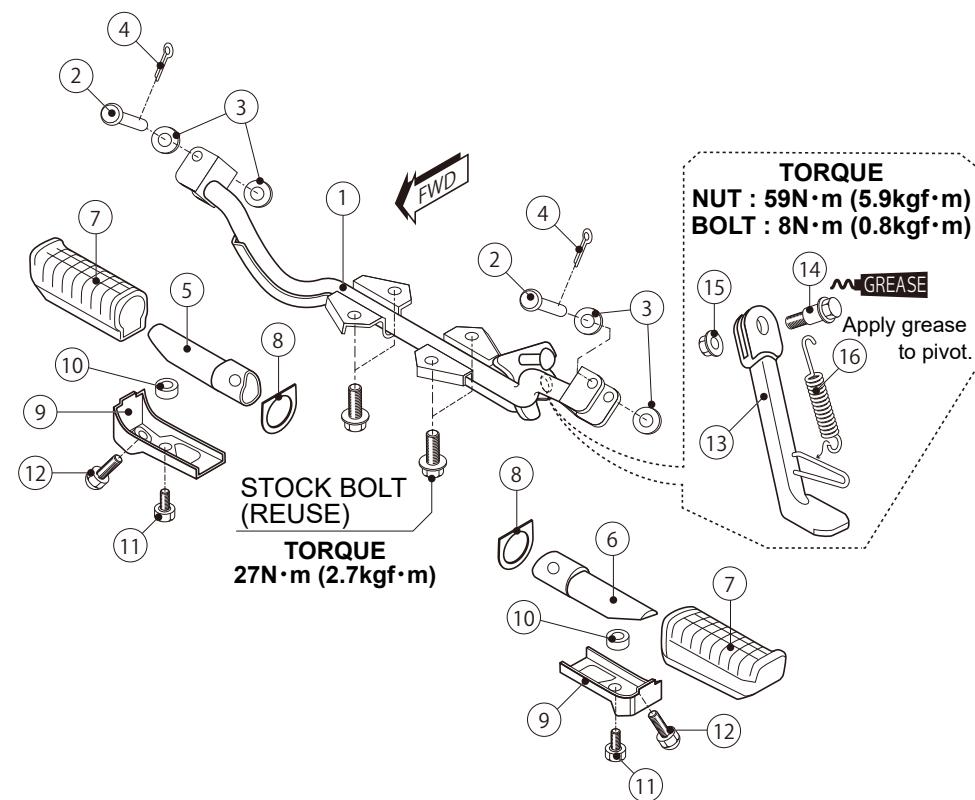
- The vehicle height is changed because of changing rear shock, etc may cause of falling because of stand degree. Please install with stock condition.
- Do not use side stand on soft mud, bumpy road, etc. Check the side stand on the flat hard road to not falling before using side stand.
- After installation, move side stand back and forth, check the strage position and positon to stable vehicle.
- Do not shake or jump on the vehicle with using side stand. It might cause of breaking side stand, surrouding parts and accident.
- Do not over weight. It causes of falling.
- Do not turn and move vehicle based on side stand.



PACKING LIST					
FIGURE	NAME		CODE	QTY	REMARK
1	STEP BAR comp	BASE BAR	516-1439001	x1	
2	JOINT PIN		516-1439002	x2	
3	FLAT WASHER	8.5x18x2.3	-	x4	
4	COTTER PIN	1.6x20	995-0801016	x2	
5	MAIN STEP BAR (R)		516-1439003	x1	
6	MAIN STEP BAR (L)		516-1439007	x1	
7	MAIN STEP RUBBER		516-1439008	x2	
8	SIDE PLATE	MAIN STEP BAR	516-1439004	x2	
9	LOWER PLATE	MAIN STEP RUBBER	516-1439006	x2	
10	COLLAR	MAIN STEP BAR	516-1439005	x2	
11	HEXAGON BOLT	M6x12	061-0500012	x2	
12	SPL BOLT 8mm	BANK SENSOR	516-1439009	x2	
13	SIDE STAND comp		516-1439010	x1	
14	PIVOT SCREW	SIDE STAND	676-1436401	x1	Apply grease to pivot.
15	LOCK NUT	M10-P1.25mm	001-0540010	x1	
16	SPRING	SIDE STAND	676-9999010	x1	

HOW TO INSTALL

- If there is a hard degradation like a blem, fatigue and wear etc on the reuse parts, please change to new ones.
- When installing, tighten bolts and nuts temporarily to adjust each parts. (If tighten firmly while temporarily installing, bolt holes do not fit, etc and cause of installation failure.)
- After temporarily installing, tighten bolts and nuts firmly with specified torque.
- Make sure it works correctly and not to loosen any parts.



201120 M-T



3-8-13 NAGATA,HIGASHI-
OSAKA,OSAKA,JAPAN
<https://www.kitaco.co.jp/>