

UNDER GUARD

APPLICATION: MONKEY 125(JB03)

CODE

632-1301000

REMARK : FOR STOCK MUFFLER ※Kitaco muffler not usable. (Other maker's muffler not ueable)

● Thank you for purchasing Kitaco product. Read and understand the instruction before installing.

ATTENTIONS (MUST READ)

- UNDER GUARD is for dress-up and reducing damage, (Not complete protection)
 - UNDER COVER is designed and made exclusive for MONKEY 125(JB02), do not use on other models.
 - We are not responsible for violation of law or damages and accidents caused by assembling mistake and improper setting.
 - Please ask authorized mechanic for assembling and setting.
- Ask a mechanic or a specialist at a specialty shop for assembling and setting if you do not understand the role of the surrounding parts.
- Refer to the HONDA service manual for each vehicle when installing.
 - Bolts and nuts may get loosen by engine vibration. Make sure to check that each part of bolts and nuts are not loose before running.
 - This instruction sheet is for the instruction with stock condition.
- ※Metal / resin / alumite products get discolored / rust for ages as well as how to use .



Do not give strong pressure such as using rope and tie-down belt to carry motorcycle. Or it may break grab bar or surrounding parts.



Do not go on the rock with under guard. Maintenance with maintenance stand not possible

PACKING LIST (Refer to the figures & illustration right side.)

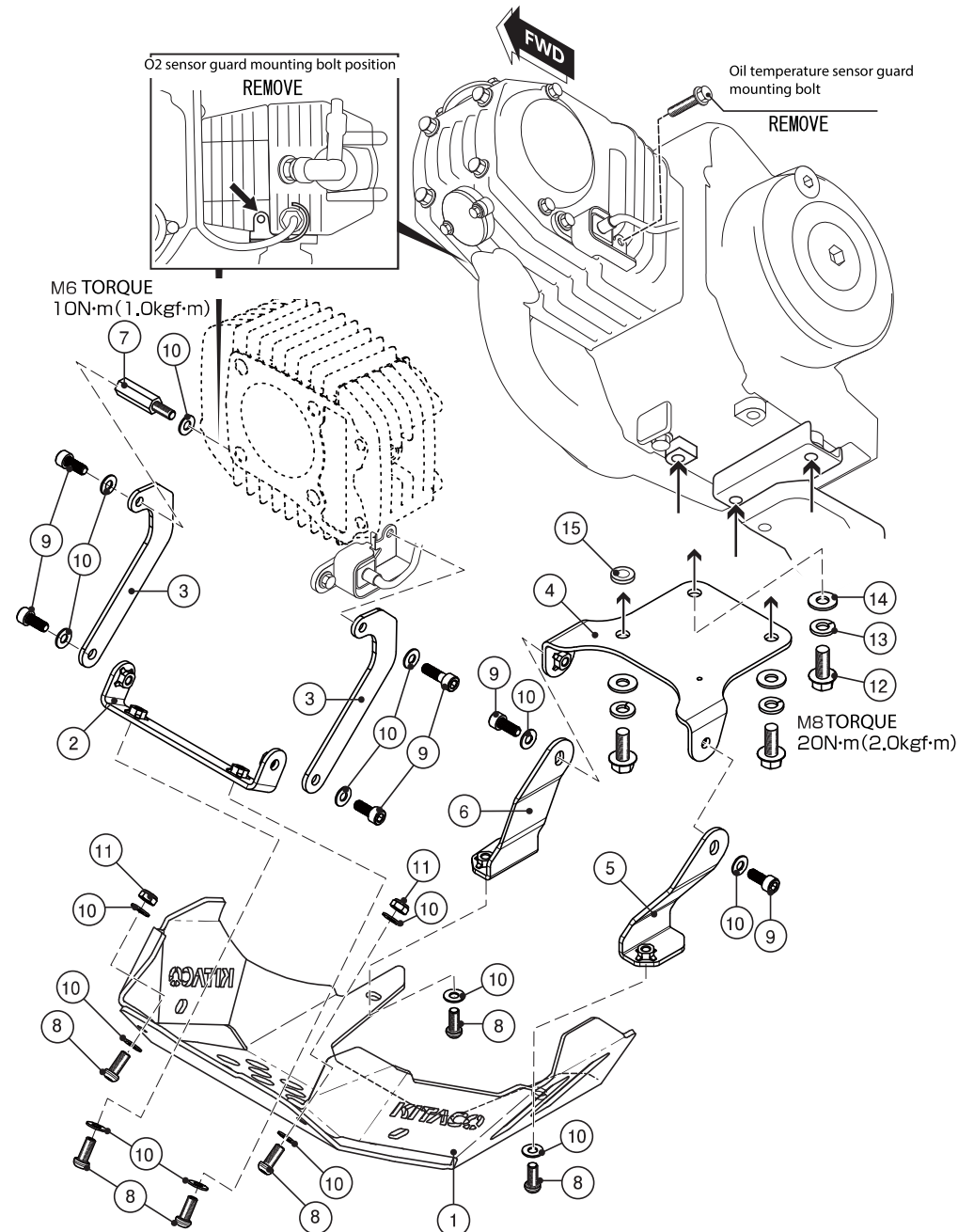
FIG	PARTS NAME		CODE	QTY	REMARK
1	UNDER GUARD BODY	(BODY) MONKEY 125	632-1300000A	x1	
2	FR BASE STAY	(FRONT)	-	x1	
3	L/RH FR SIDE STAY	(L/R FRONT)	-	x2	
4	RR BASE STAY	(REAR)	-	x1	
5	LH RRSIDE STAY	(L REAR)	-	x1	
6	RH RRSIDE STAY	(R REAR)	-	x1	
7	HEXAGON PROP	6x30mm	0900-011-06030	x1	TORQUE : 10N · m (1.0kgf · m)
8	BUTTON CAP BOLT		060-0550015	x6	TORQUE : 10N · m (1.0kgf · m)
9	CAP BOLT	M6x15	060-0500015	x6	TORQUE : 10N · m (1.0kgf · m)
10	WASHER	6x13x1.0mm	090-0900006	x15	
11	LOCK NUT	6mm	001-0540006	x2	
12	FLANGE HEX BOLT	M8x20	082-0560020	x3	TORQUE : 20N · m (2.0kgf · m)
13	SPRING WASHER	8mm	091-0500008	x3	
14	WASHER	8x16x1.2mm	090-0900008	x3	
15	SPACER COLLAR	8x18xT3mm	0900-093-00013	x1	

HOW TO INSTALL

ADVICE!

Install head light guard temporarily to see adjustment. (Otherwise, not all the bolts & nuts installs smoothly.) Tighten finally, adjusting each bolt & nut with specified torque.

● Make sure everything is stable before driving.



210514 Y-H



3-8-13 HIGASHI-
OSAKA, OSAKA,
577-0015 JAPAN