

<b>SKID PLATE</b>		APPLICATION : GROM (JC61)	
CODE			
(SILVER / GOLD) 633-1432000		(SILVER / RED) 633-1432010	
(BLACK / GOLD) 633-1432020		(BLACK / RED) 633-1432030	

● Read and understand the instruction before installing. Please keep the instruction for later needs.

### ■ ATTENTIONS (MUST READ)

- SKID PLATE is designed and made exclusive for GROM, do not use on other models.
- Do not modify the way which is not listed or it will cause damage and trouble.
- We are not responsible for damages and accidents caused by assembling mistake and improper setting.
- Please ask mechanic for assembling and setting.
- Ask a specialist at specialty shop if you do not understand the role of the surrounding parts.
- Refer to the manufacturer HONDA service manual when installation
- Please contact a mechanic nearby immediately when you find something unusual.
- This instruction sheet is for the instruction with stock condition.
- Bolts and nuts may get loosen by engine vibration.
- Please check and make sure each part of bolts and nuts are not loose before running.
- ✕ Metal and resin products get rust and fluctuate in intensity for ages and how to use.

### ALUMITE PRODUCTS

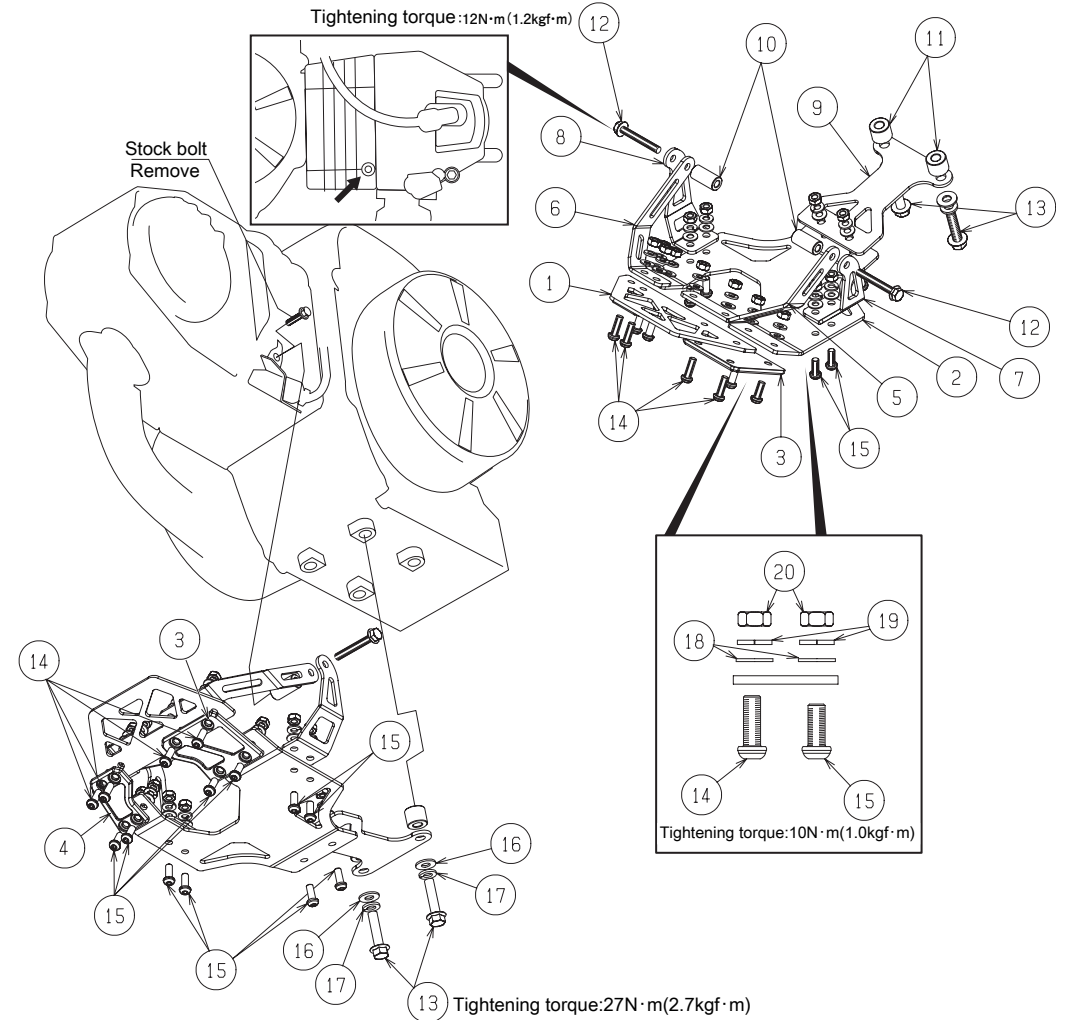
Alumite Products are tarnishable, across the ages.

PACKING LIST			
No	NAME		REFERENCE
1	SKID PLATE BODY A	silver / black	1
2	SKID PLATE BODY B	silver / black	1
3	SKID PLATE BODY L	red / gold	1
4	SKID PLATE BODY R	red / gold	1
5	SKID PLATE HOLDER L-F		1
6	SKID PLATE HOLDER R-F		1
7	SKID PLATE HOLDER L-R		1
8	SKID PLATE HOLDER R-R		1
9	SKID PLATE REAR HOLDER		1
10	COLLAR	13 × 6.2 × 27	2
11	COLLAR	18 × 8.2 × 15	2
12	FLANGE HEX BOLT	M6 × 45	2 Tightening torque : 12N · m (1.2kgf · m)
13	FLANGE HEX BOLT	M8 × 30	2 Tightening torque : 27N · m (2.7kgf · m)
14	BUTTON CAP BOLT SUS	M6 × 18	4 Tightening torque : 10N · m (1.0kgf · m)
15	BUTTON CAP BOLT SUS	M6 × 15	10 Tightening torque : 10N · m (1.0kgf · m)
16	WASHER	8 × 18 × 1.6mm	2
17	SPRING WASHER	8mm	2
18	WASHER	6 × 13 × 1mm	14
19	SPRING WASHER	6mm	14
20	NUT	6mm	14

### HOW TO INSTALL

Bolts and nuts should be tightened temporarily for fine adjustment.  
(It might not be installed correctly if tightening bolts and nuts tightly first).  
Adjusting each bolts and nuts, tighten them with specified torque tightly then.

- Make sure that the skid plate is stable under engine before running.



131021

**KITACO** JAPAN

3-8-13 NAGATA  
HIGASHI-OSAKA,  
OSAKA, 577-0015.