

SKID PLATE No,1/2	APPLICATION : CT125 HUNTER CUB (JA55/65)
CODE	
BLACK 633-1470050	SILVER 633-1470060
REMARK : exclusive for genuine exhaust ※Not supported to other company exhaust too.	

●Thank you for purchasing Kitaco product. Read and understand the instruction before installing.

ATTENTION (MUST READ)

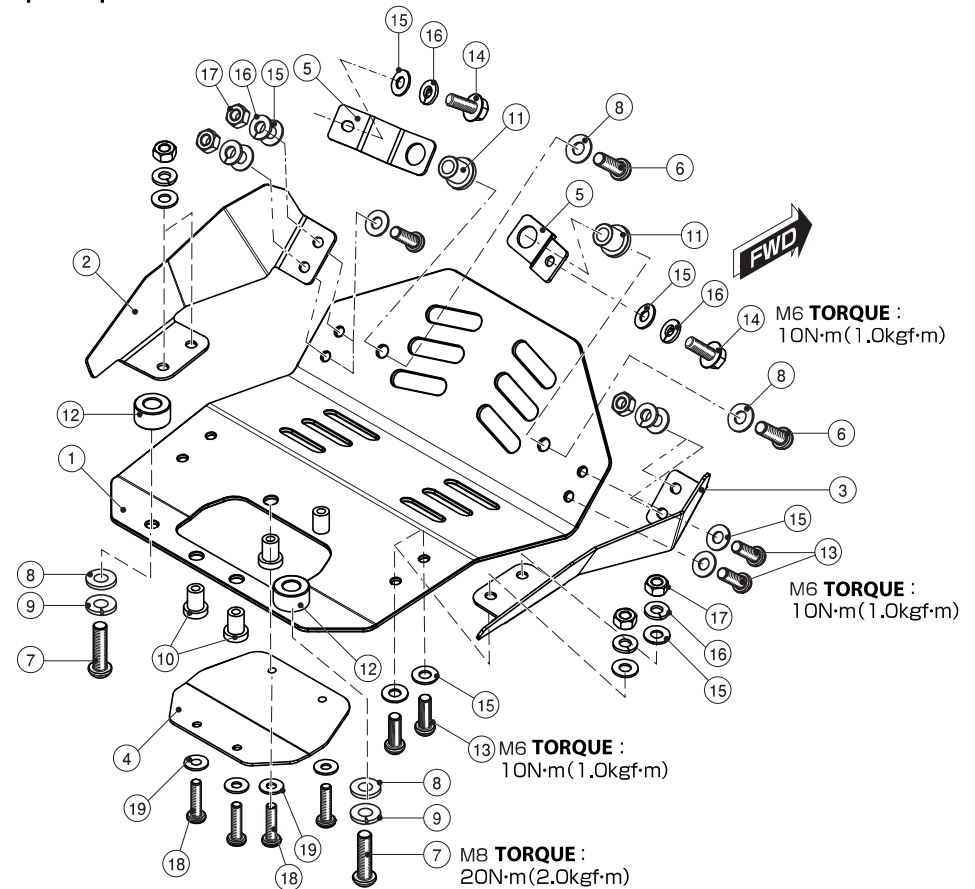
- This product is dress up parts and just reduce damage. (Cannot prevent damage completely.) Do not use for other purposes.
 - This product is designed and made exclusive for application vehicles, do not use other models. Do not modify the way which is not listed or it will cause damage and trouble.
 - We are not responsible for violation of law or damages and accidents caused by assembling mistake and improper setting.
 - Refer to the manufacturer service manual when installation.
 - Bolts and nuts may get loosen by engine vibration. Make sure not to loosen any bolts and nuts before driving.
 - This instruction sheet is for the instruction for genuine condition.
- ※Metal/resin/alumite products get discolored/rust for ages as well as how to use. Please understand when using.

! Do not apply excessive force, like rope or tie down belt to deliver vehicle.
It may damage this product or surrounding parts.

⊘ Cannot climbing up the rock and maintenance by using maintenance stand is prohibited.
It may damage this product or surrounding parts.

PACKING LIST (Refer to the figure & illustration)					
FIGURE	NAME	CODE	BK	SL	REMARK
1	BASE PLATE	BLACK (BASE)	633-1470001BK	x1	-
		SILVER	633-1470001SL	-	x1
2	L SIDE PLATE (L SIDE)	633-1470002	x1	x1	
3	R SIDE PLATE (R SIDE)	633-1470003	x1	x1	
4	MAINTENANCE LID PLATE (MAINTENANCE LID)	633-1470004	x1	x1	
5	FRONT STAY	633-1470005	x2	x2	
6	BUTTON CAP BOLT	M8x25	080-055025	x2	x2
7	BUTTON CAP BOLT	M8x30	080-055030	x2	x2
8	WASHER	8x18x1.6mm	090-0901008	x4	x4
9	SPRING WASHER	M8	091-0500008	x2	x2
10	WELNUT C550L	M5/P0.8	678-0500100	x4	x4
11	WELNUT E51618	M8/P1.25	678-0500300	x2	x2
12	SPACER COLLAR	18x8.5x10	093-9000016	x2	x2
13	BUTTON CAP BOLT	M6x15	060-0550015	x8	x8
14	FLANGE HEXAGON BOLT	M6x15	062-0562015	x2	x2
15	WASHER	6x13x1.0mm	090-0900006	x18	x18
16	SPRING WASHER	6mm	091-0500006	x10	x10
17	NUT	6mm	001-0500006	x8	x8
18	BUTTON CAP BOLT	M5x20	050-0550020	x4	x4
19	WASHER	5x12x0.8mm	090-0903005	x4	x4

●Follow No,2 installation process.
Component parts



●When changing oil, remove maintenance lid④ before maintenance.

SKID PLATE No.2/2	APPLICATION : CT125 HUNTER CUB (JA55/65)
CODE	
BLACK 633-1470050	SILVER 633-1470060
REMARK : exclusive for genuine exhaust ※Not supported to other company exhaust too.	

HOW TO INSTALL

ADVICE!

When installing, tighten bolts and nuts temporarily to adjust. (If tightening firmly while temporarily tightening, it might not match the bolt hole, therefore cannot install correctly.) After installing temporarily, tighten firmly referring to torque with adjusting.

- Remove genuine skid plate and under frame installation bolt. (Refer to the illustration below.)
- Following to the installing process 1-5, install skid plate.
(For skid plate assy ①~④, refer to the illustration right side.)
- Make sure not to loosen skid plate before riding.
- **Remove genuine skid plate / under frame installation bolt**

● HOW TO INSTALL SKID PLATE ASSY

STEP:1 (Assemble skid plate ①~④)

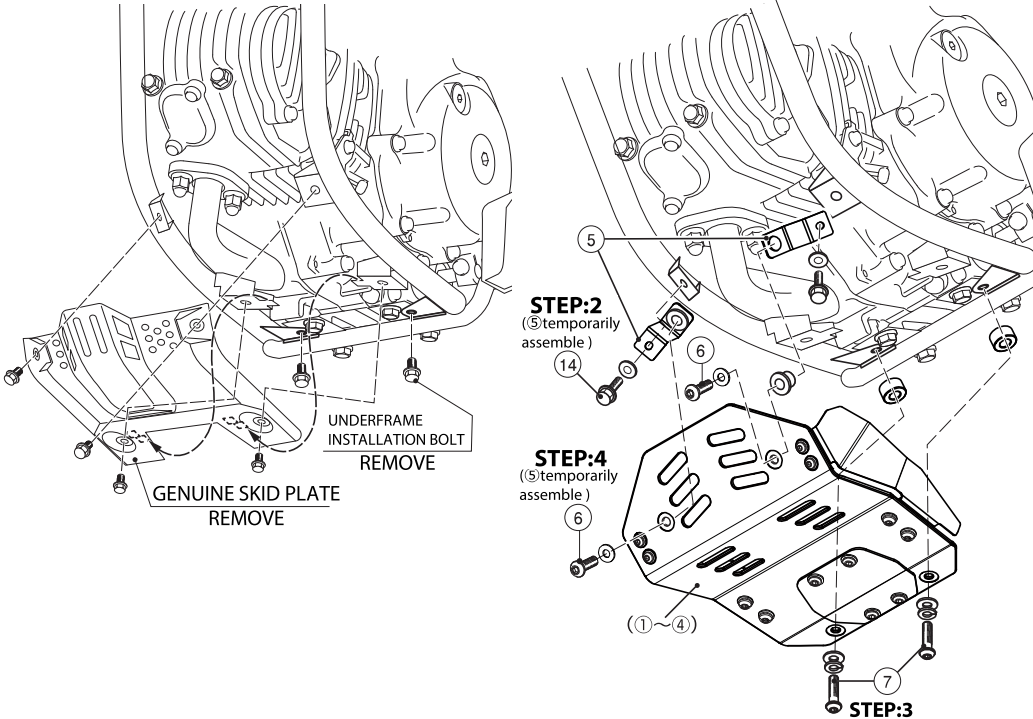
STEP:2
(⑤ temporarily assemble)

STEP:4
(⑤ temporarily assemble)

STEP:3
(⑤ temporarily assemble)

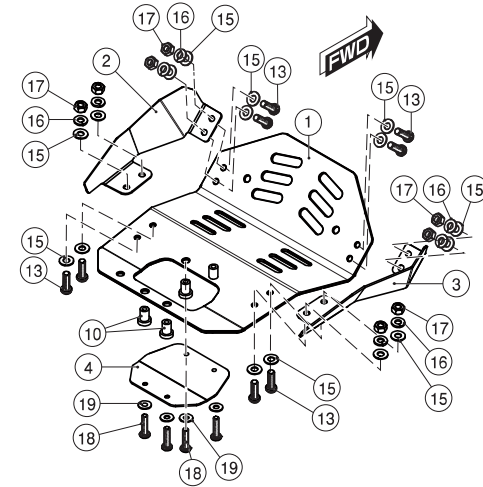
STEP:5
(Tighten firmly each temporarily tightening bolts, then tighten firmly front stay installation bolt ⑭.)

● When changing oil, remove maintenance lid ④ before maintenance.

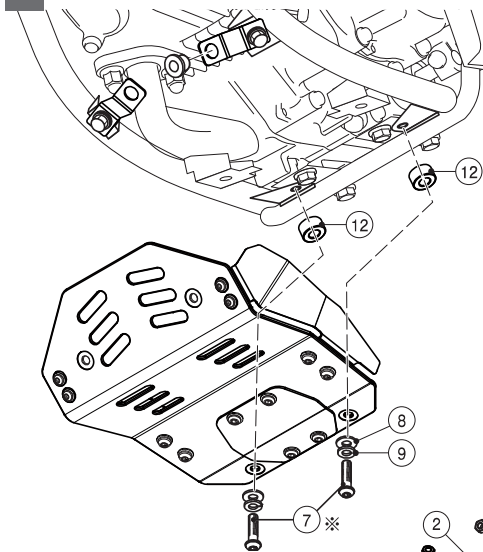


▼ HOW TO INSTALL SKID PLATE ASSY

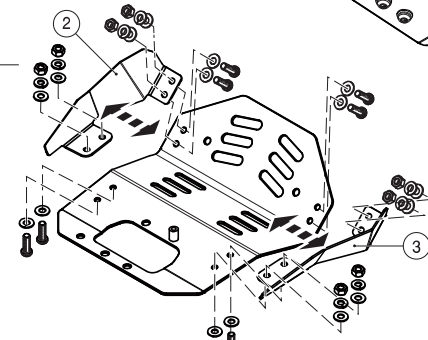
1 Assemble skid plate ①~④.
M6 TORQUE : 10N·m (1.0kgf·m)



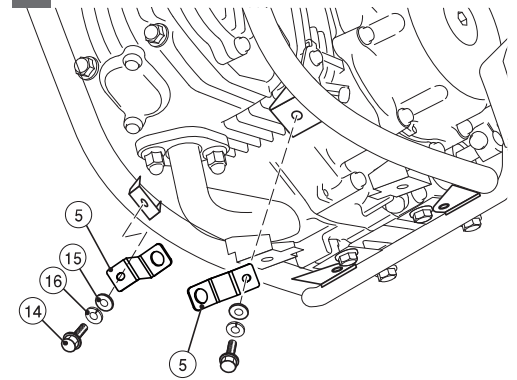
3 ※ Install skid plate temporarily while holding from under side.
※ We recommend to loosen all of the under frame installation bolt firstly.



6 If L/R side plate interrupt surrounding parts, please adjust the installation point.
M6 TORQUE : 10N·m (1.0kgf·m)



2 Temporarily assemble front stay (L/R).



4 Install temporarily to front stay by using ⑥ BOLT / ⑪ WELNUT.
5 Tighten firmly each bolts, then tighten front stay installation bolt ⑭ firmly by spanner, etc.

M6 TORQUE : 10N·m (1.0kgf·m)
M8 TORQUE : 20N·m (2.0kgf·m)

