

GRAB BAR		
CODE	(SILVER) 653-1432000	(BLACK) 653-1432010
APPLICATION	GROM (JC61)	

- Read and understand the instruction before installing.

### ■ ATTENTIONS (MUST READ)

- This instruction sheet is for the instruction with stock condition.
  - GRAB BAR is designed and made exclusive for GROM, do not use on other models. Do not modify the way which is not listed or it will cause damage and trouble.
  - We are not responsible for damages and accidents caused by assembling mistake and improper setting.
  - Please ask mechanic for assembling and setting.
- Ask a specialist at specialty shop if you do not understand the role of the surrounding parts.
- Refer to the manufacturer HONDA service manual for each vehicle when installing
  - Bolts and nuts may get loosen by engine vibration.
- Please check and make sure each part of bolts and nuts are not loose before running.
- Please contact a mechanic nearby immediately when you find something unusual.



Do not give strong pressure such as using rope and tie-down belt to carry motorcycle. Or it may break grab bar or surrounding parts.



Do not pick up motorcycle, using grab bar.

PACKING LIST				
NAME	CODE	QTY	REFERENCE	
GRAB BAR		× 1		
FLANGE CAP BOLT M8 x 20	080-0560020	× 4	Fastening torque : 26N · m(2.7kgf · m)	
SPACER COLLAR φ8.2 x 13 x L3	0900-093-00009	× 4		

### How to install

※ Please do not break pawls of cover.

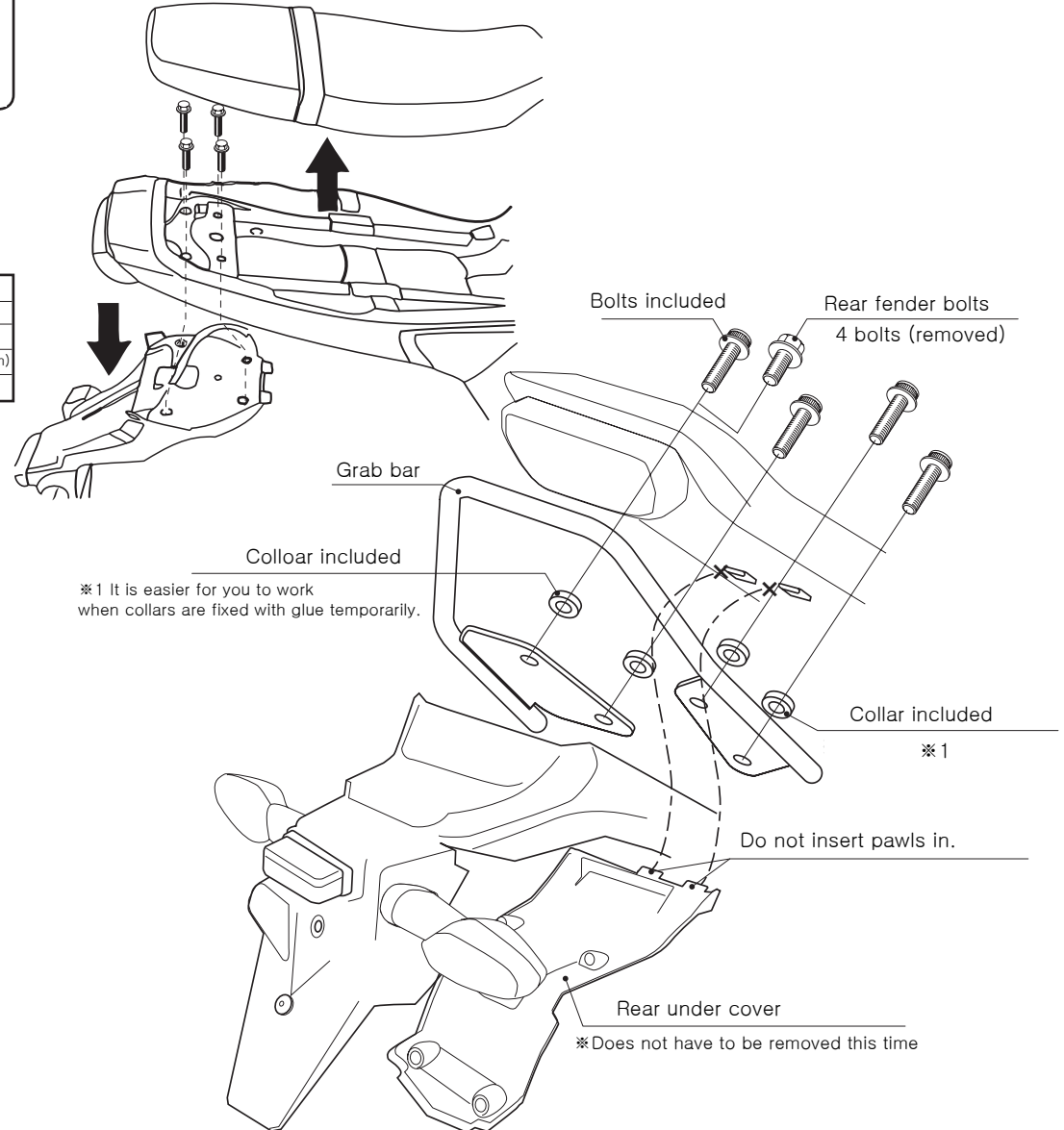
- 1) Remove seat and stock rear fender.
- 2) Fasten bolts and collars included temporarily with grab bar and rear fender.
- 3) Tighten bolts which were already temporarily tightened.

Make sure that each part is stable, each lamp works normally before running.

### How to maintenance

Depending on how to use, stainless might rust.

Dry the water out and apply rust-preventive agent, after getting wet such as motorcycle wash and after rain.



130610



3-8-13 NAGATA  
HIGASHI-OSAKA,  
OSAKA, 577-0015,  
JAPAN