

SIDE STAND HS-140 for LIVE Dio

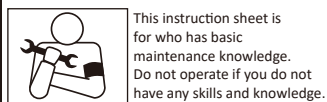
CODE	656-1010140
APPLICATION	LIVE Dio / -J (AF34) -SR / -ST / ZX (AF35)

Thank you for purchasing Kitaco product. Read and understand the instruction before installing.

ATTENTION (MUST READ)

▲Pay attention to below to install side stand. Assembling mistake and improper setting may cause of trouble and accident.

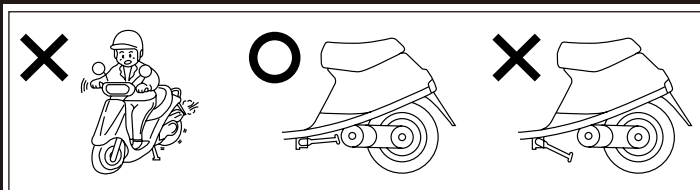
- We are not responsible for violation of law or damages and accidents caused by assembling mistake and improper setting.
- Please ask authorized mechanic for assembling and setting. Ask a specialist at specialty shop if you do not understand the role of the surrounding parts.
- This product is designed and made exclusive for application models, do not use other models.
- The vehicle height is changed because of changing rear shock, etc may cause of falling because of stand degree. Please install with stock condition.
- After installation, move side stand back and forth, check the strage position and positon to stable vehicle.
- Do not shake or jump on the vehicle with using side stand. It might cause of breaking side stand, surrounding parts and accident.
- Do not over weight. It causes of falling.
- Bolts and nuts may get loosen by engine vibration. Make sure not to loosen any bolts and nuts before driving.
- Please give this instruction sheet when you sell to someone.



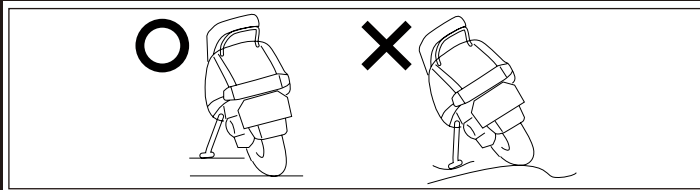
This instruction sheet is for who has basic maintenance knowledge. Do not operate if you do not have any skills and knowledge.



Do not modify the way which is not listed or it will cause damage and trouble.



Do not start engine with using side stand. It might cause of jump out the vehicle and falling. Please storage side stand before riding.



Do not use side stand on soft mud, bumpy road, etc. Check the side stand on the flat hard road to not falling before using side stand.

HOW TO INSTALL

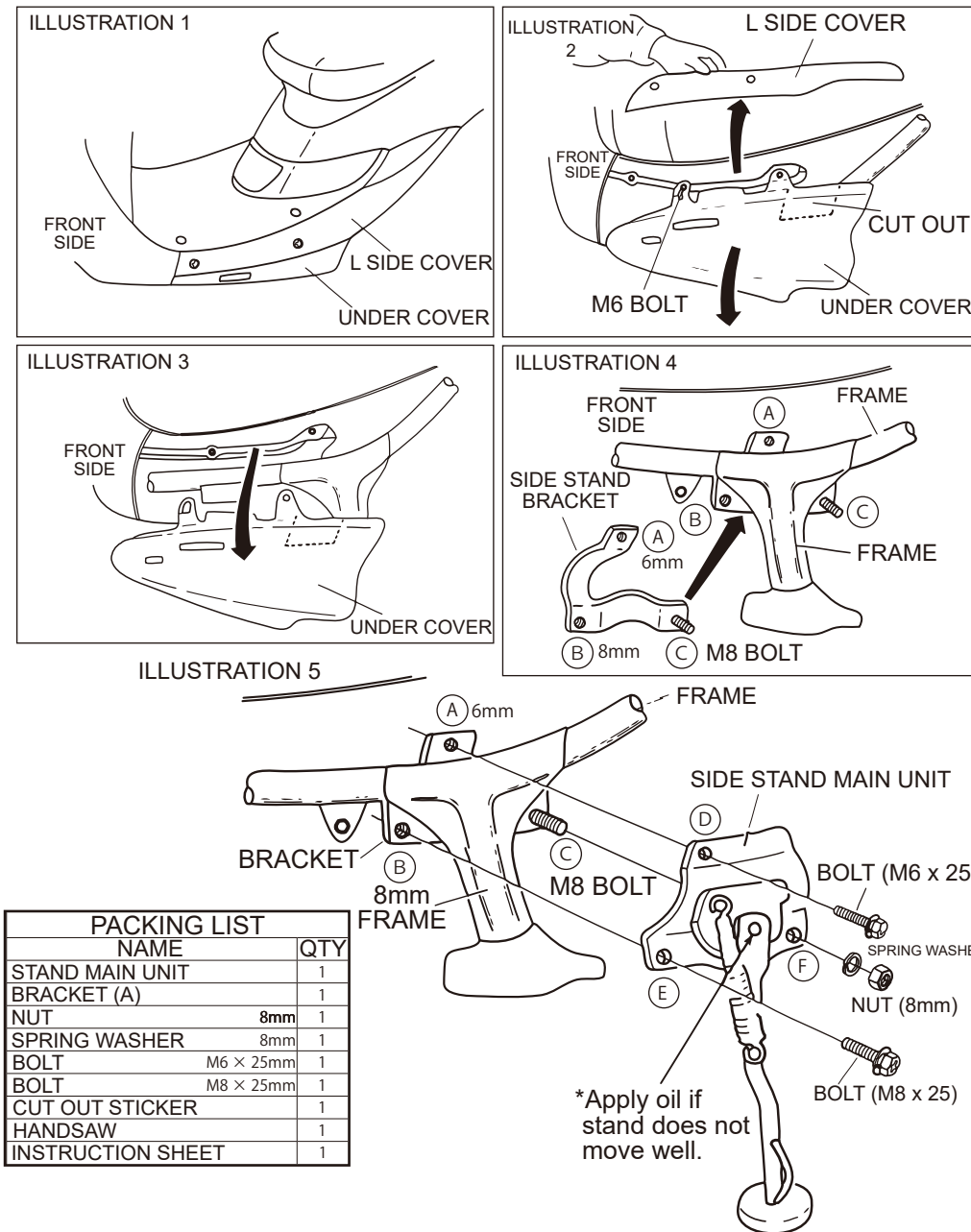
- 1) Remove L side cover on illustration 1 as illustration 2.
- 2) Remove left side bolt of under cover as illustration 3, lower it.
- 3) Attach cut out sticker to left end of under cover, then cut out along dotted line with handsaw.
- 4) Install bracket from back side of the frame as illustration 4, then install side stand on illustration 5 from outer side. (Be careful not to sand rear brake cable between bracket and frame.)
- 5) Insert bracket (C) bolt (M8) to side stand main unit (F) hole, tighten spring washer and nut (8mm) firmly, then tighten bolt (6mm) to (A / D) hole and bolt (8mm) to (B / E) alternately evenly.

*ATTENTION : Tighten bolt one by one may cause of installation failure.

120327

- 6) Up and down the side stand to make sure not to stand bracket upper side moves. If it moves, additional tightening to step5 bolts.
- 7) Put the under cover back while twisting to install. At this time, if the side stand interrupts to cover, please shave interrupting point.
- 8) Put the other removed covers back to finish installation.

INSTALLATION ILLUSTRATION



PACKING LIST	
NAME	QTY
STAND MAIN UNIT	1
BRACKET (A)	1
NUT	8mm 1
SPRING WASHER	8mm 1
BOLT	M6 × 25mm 1
BOLT	M8 × 25mm 1
CUT OUT STICKER	1
HANDSAW	1
INSTRUCTION SHEET	1

*Apply oil if stand does not move well.