

SIDE STAND HS-141 for CABINA / BROAD	
CODE	656-1010141
APPLICATION	CABINA 50 / 90 / BROAD 50 / 90

Thank you for purchasing Kitaco product. Read and understand the instruction before installing.

ATTENTION (MUST READ)

- ▲ Pay attention to below to install side stand. Assembling mistake and improper setting may cause of trouble and accident.
- We are not responsible for violation of law or damages and accidents caused by assembling mistake and improper setting.
- Please ask authorized mechanic for assembling and setting. Ask a specialist at specialty shop if you do not understand the role of the surrounding parts.
- This product is designed and made exclusive for application models, do not use other models.
- The vehicle height is changed because of changing rear shock, etc may cause of falling because of stand degree. Please install with stock condition.
- After installation, move side stand back and forth, check the strage position and positon to stable vehicle.
- Do not shake or jump on the vehicle with using side stand. It might cause of breaking side stand, surrounding parts and accident.
- Do not over weight. It causes of falling.
- Bolts and nuts may get loosen by engine vibration. Make sure not to loosen any bolts and nuts before driving.
- Please give this instruction sheet when you sell to someone.



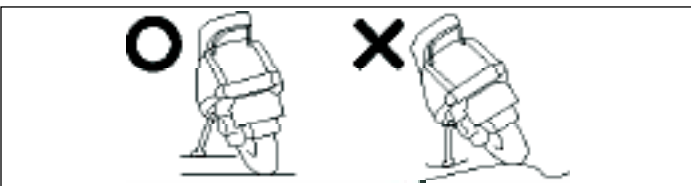
This instruction sheet is for who has basic maintenance knowledge. Do not operate if you do not have any skills and knowledge.



Do not modify the way which is not listed or it will cause damage and trouble.



Do not start engine with using side stand. It might cause of jump out the vehicle and falling. Please storage side stand before riding.



Do not use side stand on soft mud, bumpy road, etc. Check the side stand on the flat hard road to not falling before using side stand.

ILLUSTRATION 1

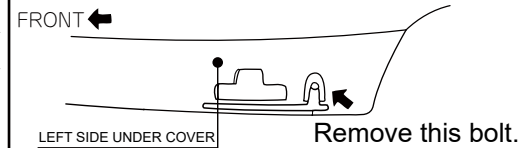


ILLUSTRATION 2

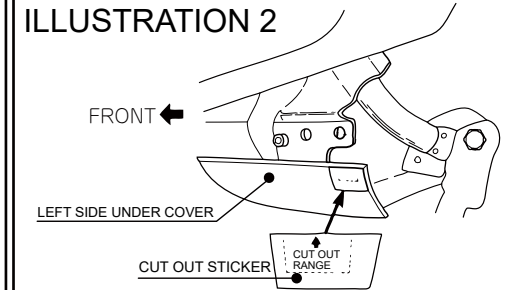
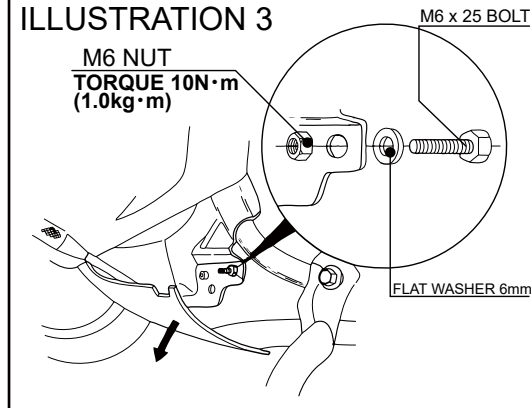


ILLUSTRATION 3

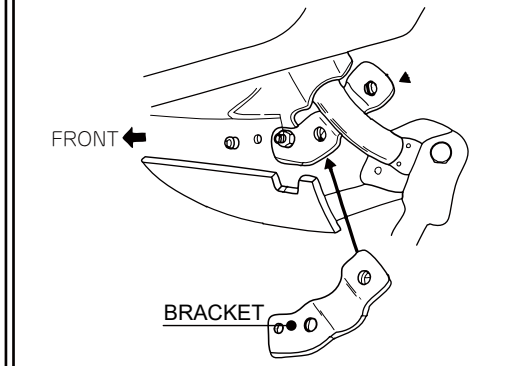


M6 NUT
TORQUE 10N·m
(1.0kg·m)

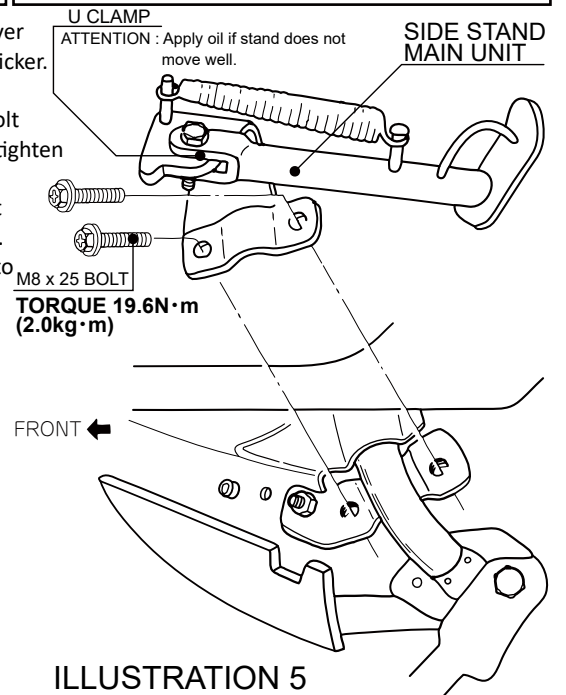
M6 x 25 BOLT

FLAT WASHER 6mm

ILLUSTRATION 4



1. Refer to the illustration 1, remove left side under cover bolt and lower it, then attach the attached cut out sticker.
2. Cut out under cover along to cut out sticker line.
3. Refer to the illustration 3, insert attached M6 x 25 bolt and flat washer 6mm from back side of frame, then tighten with nut from front side.
4. Install attached bracket to illustration 3 installed bolt with spring washer and nut referring to illustration 4.
5. Install side stand main unit to bracket that installed to frame, tighten it with attached M8 x 25 bolt. Tighten alternately evenly.
6. Put the under cover back to finish installation. If the under cover interrupts to stand, please shave under cover by hand saw or cutter knife, etc.



PACKING LIST		
	NAME	QTY
1	STAND MAIN UNIT	× 1
2	BRACKET	× 1
3	M6 x 25 BOLT	× 1
4	FLAT WASHER 6mm	× 1
5	M6 NUT	× 1
6	M8 x 25 BOLT	× 1
7	CUT OUT STOCKER	× 1



210909
3-8-13 NAGATA,
HIGASHI-OSAKA,
OSAKA, JAPAN
<https://www.kitaco.co.jp/>