

<b>AERO SCREEN</b>	
CODE	SMOKE : 670-0200100
APPLICATION	N-MAX125 (2DS2) / 155 (BV43) etc

Thank you for purchasing Kitaco product. Read and understand the instruction before installing.

### ATTENTION (MUST READ)

- This product is designed and made exclusive for application models, do not use other models. Do not modify the way which is not listed or it will cause damage and trouble.
- We are not responsible for violation of law or damages and accidents caused by assembling mistake and improper setting.
- Please ask authorized mechanic for assembling and setting. Ask a specialist at specialty shop if you do not understand the role of the surrounding parts.
- Refer to the manufacturer service manual when installation.
- Bolts and nuts may get loosen by engine vibration. Make sure not to loosen any bolts and nuts before driving.
- This instruction sheet is for the instruction for stock condition.

### HOW TO HANDLE SCREEN

#### ⚠ ATTENTION

- Under direct sunlight, the deformation, fire, etc trouble might occur because of condensing phenomenon due to concave mirror effect. Be careful when parking.
- In case of parking under direct sunlight, please protect screen from direct sunlight by using soft cloth, etc.
- When windy day, it is easy to get effect by wind, please ride at reduced speed.
- In case of parking with body cover on, please choose shaded and well ventilated place. If park under the high heat with body cover on, temperature increases inside and it might cause of deformation.
- Be careful not to apply battery fluid and brake fluid. It breaks screen.
- Do not apply excessive force and hard bend. It might cause of broken.
- Please check regularly to make sure not to loosen and slip. Please do additional tightening in need.
- Welnut get aging by ultraviolet rays and aging. If deterioration is remarkable, please change to new one.
- If there is a hard scratch and break on screen, please change to new one because it might fall off.
- In case that screen gets dirt, wipe with soft cloth or sponge with lots of water. Do not use blush because screen is easy to get scratch.
- In case of screen gets heavy dirt, please use neutral detergent. Do not use abrasive powder, organic solvent, acid / alkaline detergent, gasoline, benzine, sinner, etc.



PACKING LIST				
FIGURE	NAME	CODE	QTY	REMARK
1	SCREEN SMOKE	670-0200100	× 1	
-	ATTENTION RABEL	-	× 1	Attach to screen.
2	L STAY	670-0200101	× 1	
3	R STAY	670-0200102	× 1	
4	LOWER STAY	670-0200103	× 1	
5	PAN HEAD (+) SCREW (B)	M5 × 20	052-0503020	× 3
6	WASHER (B)	12 × 5.2 × T1.5mm	090-0914005	× 3
7	RUBBER COLLAR	13 × 6.2 × T1mm	094-9006131	× 3
8	WELNUT C550L	M5 × 0.8	678-0500100	× 3
9	FLANGE BUTTON CAP BOLT	M5 × 25	050-0603025	× 4

### HOW TO INSTALL

#### ※ADVICE

When installing, tighten each bolt temporarily. Then tighten firmly with adjusting balance of left and right.

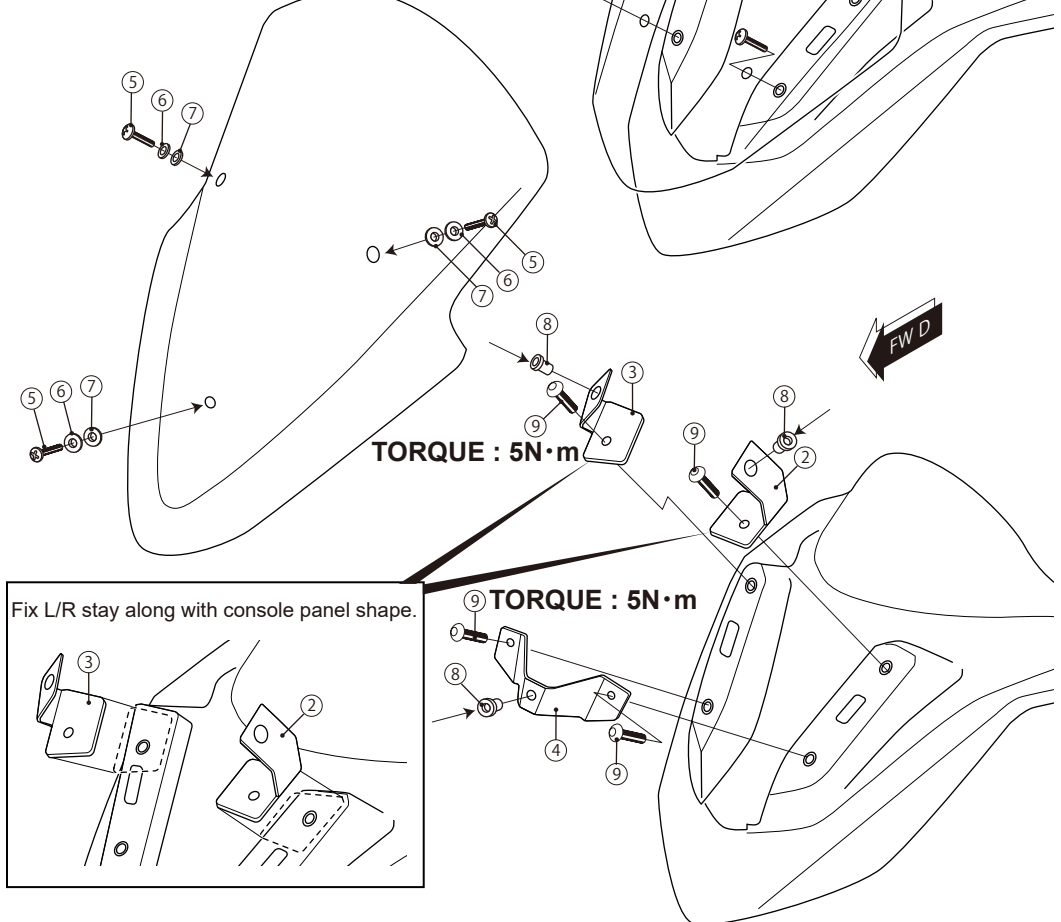
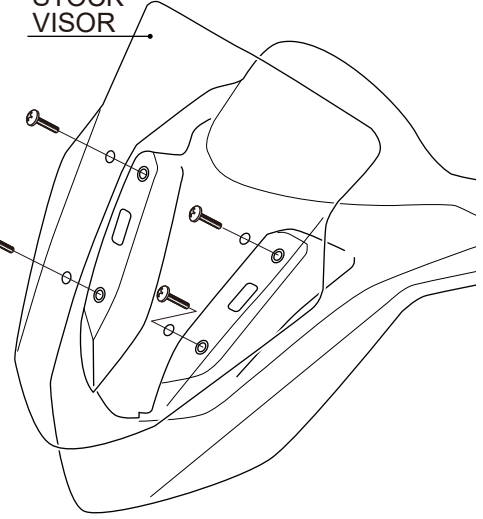
- 1) Remove stock visor (screen).
- 2) Check stay shape and install visor installation position temporarily. (Refer to the illustration below.)
- 3) Install temporarily while adjusting balance of left and right with attached welnut / bolt / washer.
- 4) After adjusting balance, remove screen and tighten stay installation bolt firmly with holding stay.
- 5) Install screen to finish. (Tighten welnut bolt with specified torque below.)

#### ATTENTION!

- Basically, reuse genuine parts if it is unattached.
- If there is a hard degradation like a blem, fatigue and wear etc on the reuse parts, please change to new ones.
- Before installation, make sure to match the front cowl hole position not to break outer cowls.



#### STOCK VISOR



160930 Y-N  
**KITACO**  
 株式会社キタコ  
 3-8-13 NAGATA,  
 HIGASHI-OSAKA,  
 OSAKA, JAPAN