

FENDER LESS KIT

APPLICATION : MONKEY125 (JB02)

CODE : 691-1300000

- Thank you for purchasing Kitaco product. Read and understand the instruction before installing.

ATTENTIONS (MUST READ)

- This instruction is for installing parts to stock condition.
- Fender less kit is dress-up parts. Not for other use.
- FENDER LESS KIT is designed and made exclusive for MONKEY125, do not use on other models.
- Do not modify the way which is not listed or it will cause damage and trouble.
- We are not responsible for violation of law or damages and accidents caused by assembling mistake and improper setting.
- Please ask authorized mechanic for assembling and setting.
- Ask a specialist at specialty shop if you do not understand the role of the surrounding parts.
- Refer to the manufacturer service manual when installation
- Please check and make sure each part of bolts and nuts are not loose before running.

PACKING LIST (Refer to the figures & illustration right side)

FIG	PARTS NAME	CODE	691-1300000	
1	FENDER LESS BASE PLATE	691-1300001	1	
2	BASE BLOCK	691-1300002	1	
3	BASE LICENSE PLATE	691-1300003	1	
4	CAP BOLT	M6x15	060-0500015	4
5	WASHER	6x13x1.0	090-0900006	2
6	BUTTON CAP BOLT	M4x10	040-0550010	2
7	LOCK NUT	4 mm	001-0540004	2
8	WASHER	9.5x22x2.0	691-1300004	3
9	REFLECTOR KIT	50 ~ 125cc 用	801-0800310	1

OPTIONAL PARTS (Sold separately)

FIG	PARTS NAME	CODE
OP1	CLASS II STICKER & PLATE SET	801-0800920

HOW TO INSTALL (Refer to HONDA SERVICE MANUAL together)

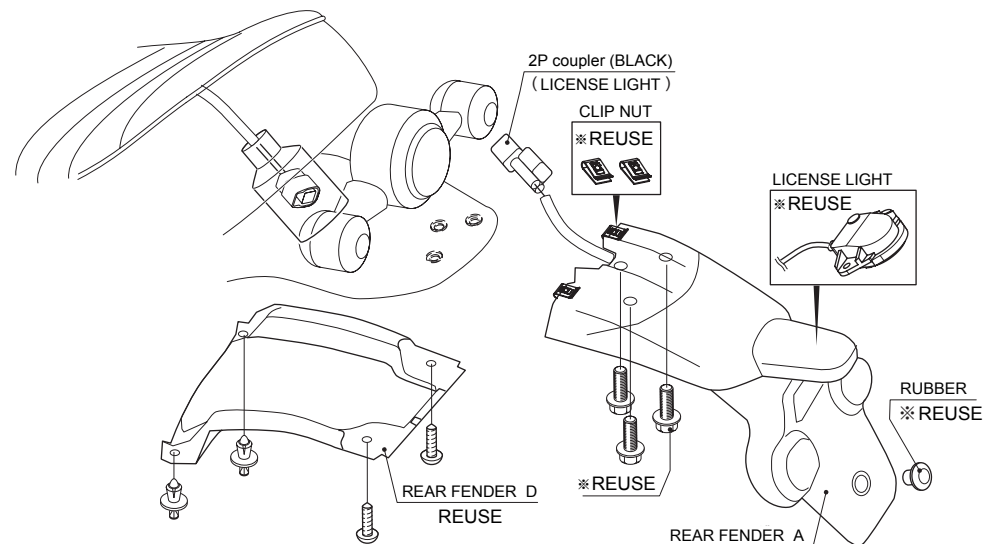
REMOVING PLASTICS

- ※ Do not break cover's pawls when removing.
- 1) Remove stock rear fender D & rear fender A. (License light & clip nut reusable)
- ※ Remove license light 2P coupler & license light on rear fender.

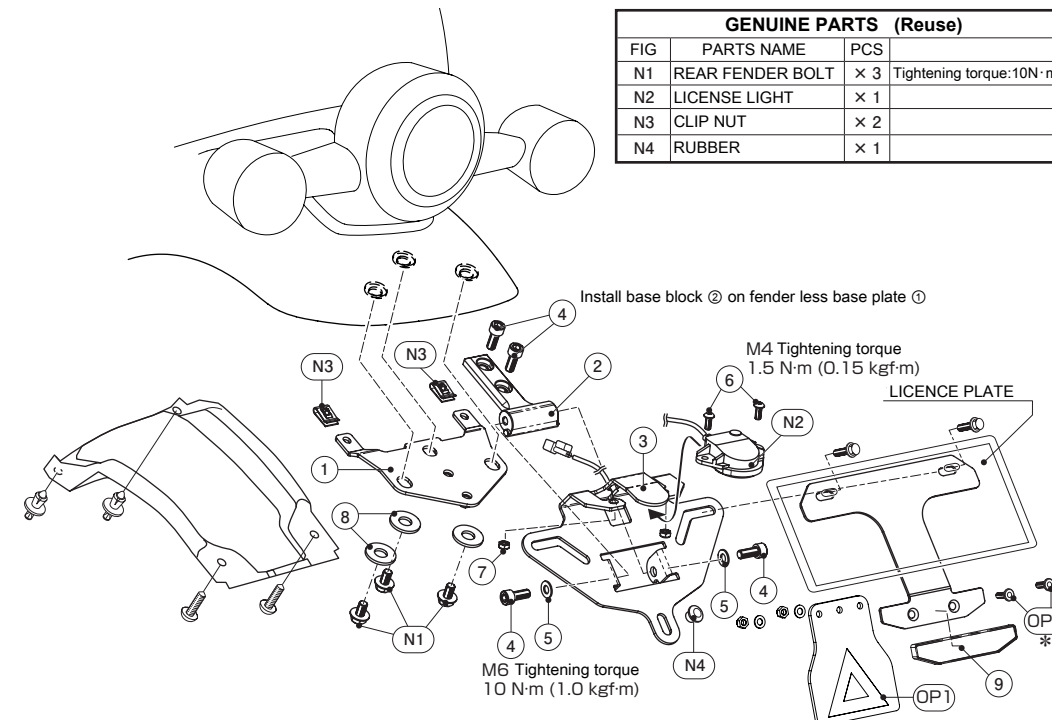
INSTALLING FENDER LESS KIT

- 2) Install fender less parts (Refer to illustration right side)
 - ※ Install base block ② on fender less base plate ①, then install on vehicle.
 - ※ Reroute and connect harness, tighten it with tie-wrap not to sag.
- 3) Tighten bolts which used to be temporarily tightened.
 - Make sure there is no loosen, tightened stable, tail light activates correctly before driving.

REMOVABLE (Refer to the manufacturer service manual when installation)



- ※ Reuse stock parts that are not included in the kit.
- ※ Change the reusing parts with new ones if there are significant blem, fatigue or wear.



GENUINE PARTS (Reuse)

FIG	PARTS NAME	PCS	Tightening torque:10N·m
N1	REAR FENDER BOLT	× 3	
N2	LICENSE LIGHT	× 1	
N3	CLIP NUT	× 2	
N4	RUBBER	× 1	