

<b>FENDER LESS KIT type2</b>	APPLICATION : GROM (FNO,JC61-1000001~1299999)
CODE : 691-1432200	
REMARK : Able to install with Kitaco grab bar together.	

Thank you for purchasing Kitaco product. Read and understand the instruction before installing.

### ATTENTION (MUST READ)

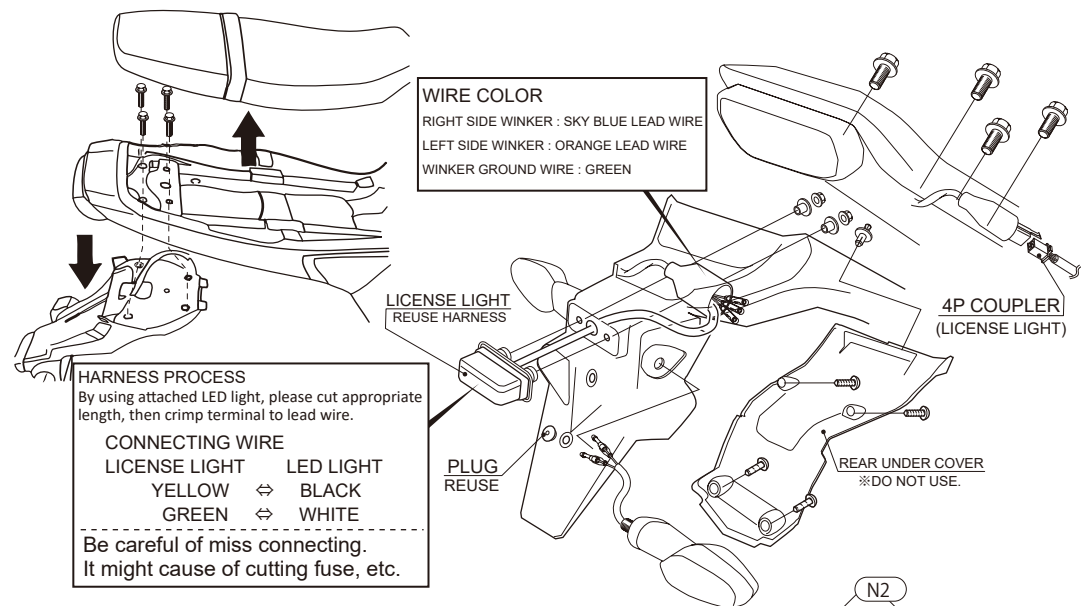
- This instruction sheet is for the instruction for stock condition.
- This product is for dress-up. Do not use for other purposes.
- This product is designed and made exclusive for application models, do not use other models. Do not modify the way which is not listed or it will cause damage and trouble.
- We are not responsible for violation of law or damages and accidents caused by assembling mistake and improper setting.
- Please ask authorized mechanic for assembling and setting. Ask a specialist at specialty shop if you do not understand the role of the surrounding parts.
- Refer to the manufacturer service manual when installation.
- Bolts and nuts may get loosen by engine vibration. Make sure not to loosen any bolts and nuts before driving.

PACKING LIST			
FIGURE	NAME	CODE	QTY
1	FENDER LESS BASE PLATE L	-	X1
2	FENDER LESS BASE PLATE R	-	X1
3	SPACER COLLAR $\varphi$ 8.2X13XL3	0900-093-00009	X4
4	FENDER LESS LICENSE PLATE	-	X1
5	FENDER LESS WINKER PLATE	-	X1
6	FENDER LESS SUB PLATE	-	X1
7	LED LICENSE LAMP	691-0770005	X1
-	BULLET (MALE) CA104	755-0900610	X1
-	BULLET (FEMALE) CA104	755-0900611	X1
-	SLEEVE (ROUND / MALE) P-2.5	755-0900640	X1
-	SLEEVE (ROUND / FEMALE) KS-2.5	755-0900641	X1
8	REFLECTOR 19X98mm	801-0800003	X1
9	FLAT CAP BOLT M6X15	060-0590015	X4
10	WASHER 6mm	090-0900006	X4
11	SPRING WASHER 6mm	091-0500006	X8
12	NUT 6mm	-	X4
13	FLANGE HEXAGON BOLT M6X12	062-0561012	X4
-	TIE WRAP BLACK 152X3.5mm	0901-700-01200	X4

### HOW TO INSTALL (Illustration is just a reference. Please refer to the service manual.)

- ※ Be careful not to break claws when removing / installing.
- 1) Remove rear under cover, winker and stock rear fender. (Please remove other parts that ease to installation.)
  - ※ Disconnect winker and license light wires terminals.
  - 2) Install attached fender less parts. (Refer to the illustration.) Reuse stock winker.
  - 3) Reuse the removed license light harness coupler side (vehicle side), please cut harness at license light side, then crimp to lead wire.
  - ※ After route (refer to the illustration) and connect each wire, please tie extra wires to frame with tie wrap not to hang down.
  - 4) Tighten temporarily tightened bolts firmly. Make sure not to loosen any parts and each lamp works correctly before riding.

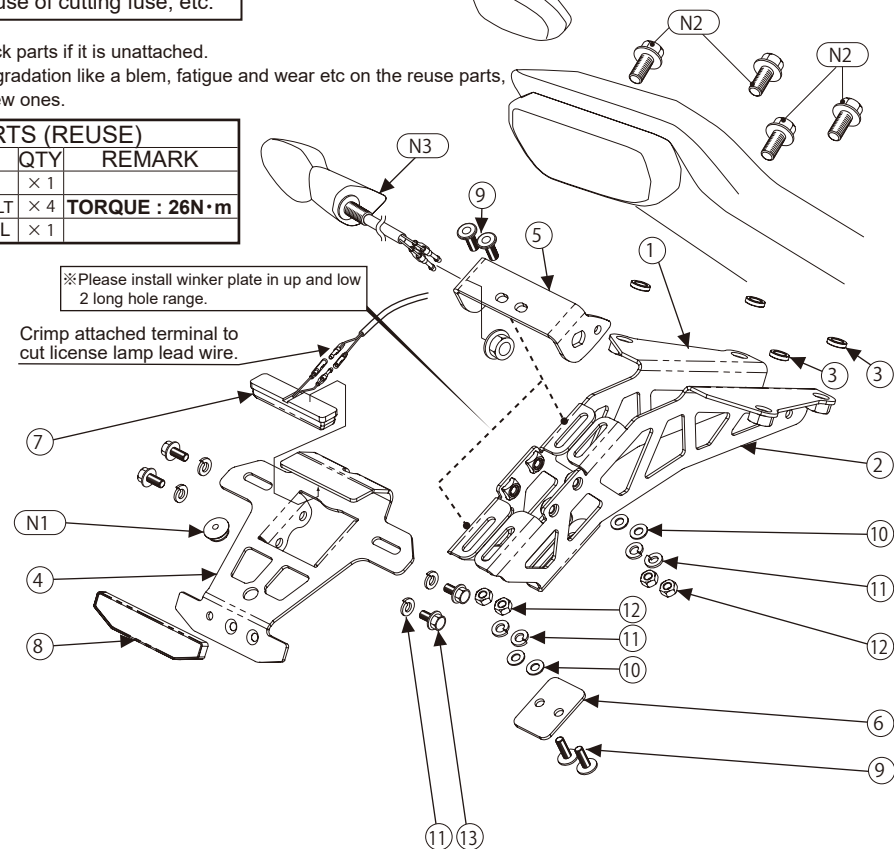
### REMOVING / INSTALING OUTER COWLS (Illustration is just a reference. Please refer to the service manual.)



※ Basically, reuse stock parts if it is unattached.

※ If there is a hard degradation like a blem, fatigue and wear etc on the reuse parts, please change to new ones.

STOCK PARTS (REUSE)			
FIGURE	NAME	QTY	REMARK
N1	PLUG	× 1	
N2	REAR FENDER BOLT	× 4	<b>TORQUE : 26N·m</b>
N3	REAR WINKER RL	× 1	



160908 M-T