

TANDEM BACK REST	
CODE	(BLACK) 80-652-13200
APPLICATION	DAX125 (JB04)


Thank you for purchasing Kitaco product. Read and understand the instruction before installing.


ATTENTION (MUST READ)

- This instruction sheet is for the instruction for stock condition.
- This product is designed and made exclusive for application models, do not use other models. Do not modify the way which is not listed or it will cause damage and trouble.
- We are not responsible for violation of law or damages and accidents caused by assembling mistake and improper setting.
- Please ask authorized mechanic for assembling and setting. Ask a specialist at specialty shop if you do not understand the role of the surrounding parts.
- Refer to the manufacturer service manual when installation.
- Bolts and nuts may get loosen by engine vibration. Make sure not to loosen any bolts and nuts before driving.

ATTENTION!

- This product does not have enough toughness. If you use as back rest, use this product as support.
- Pad is not completely waterproof. Rain or washing may penetrate water to inside even if the pad surface is dry. It may affect to passenger.
- This product may get discolored due to direct sunlight, long term use. Please understand when using.

 Do not apply excessive force, like rope or tie down belt to deliver vehicle. It may damage this product or surrounding parts.

 Do not apply excessive force, like lifting vehicle by using product, etc. If you turn vehicle, use this product as support.

PACKING LIST

FIGURE	NAME	CODE	QTY	REMARK
1	GRAB BAR BLACK (STEEL)	-	x1	
2	BACK REST PAD (300) L SIZE	652-0500011	x1	
3	FLANGE LOCK NUT M8-P1.25	001-0550008	x2	
4	WASHER 8x22xT2.3mm	090-0902008	x2	For fixing pad.

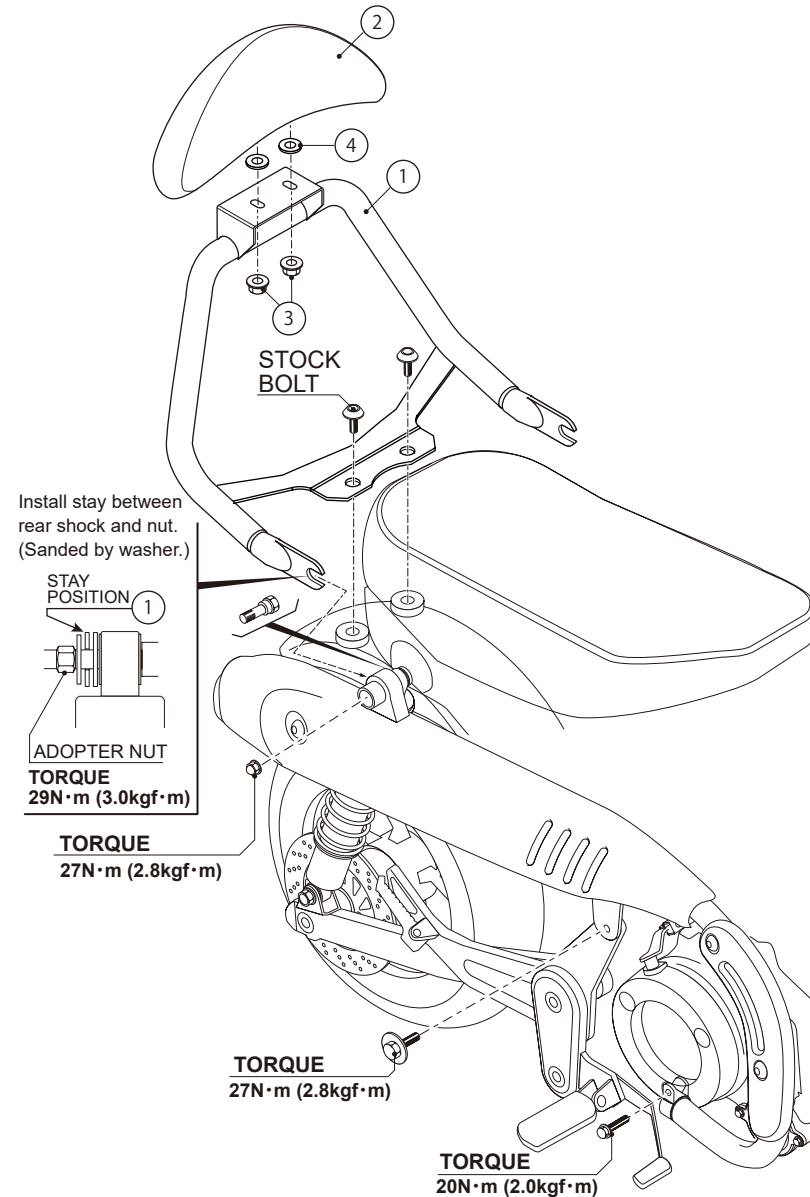
HOW TO INSTALL

- 1) Loosen left / right rear shock mount nut and muffler adopter nut to remove stock grab bar.
- 2) Install Kitaco grab bar to stock grab bar installation position. (Refer to the illustration.)
- 3) When installing, tighten temporarily tightened bolts firmly. Make sure not to loosen any part and work correctly before riding.

HOW TO TAKE CARE

Rust might occur depending on how to use.

Especially riding under the rain or washing, wipe water perfectly and apply anti-rust, etc.



220909 Y-H

 3-8-13 NAGATA,
HIGASHI-OSAKA,
OSAKA, JAPAN
<https://www.kitaco.co.jp/>