

BACK REST kit		
CODE	(LARGE PAD) 80-652-13201	(SMALL PAD) 80-652-13202
APPLICATION	DAX 125 (JB04)	
REMARK		

Thank you for purchasing Kitaco product. Read and understand the instruction before installing.

### ATTENTION (MUST READ)

- This instruction sheet is for the instruction for genuine condition.
- This product is designed and made exclusive for application vehicles, do not use other models. Do not modify the way which is not listed or it will cause damage and trouble.
- We are not responsible for violation of law or damages and accidents caused by assembling mistake and improper setting.
- Please ask authorized mechanic for assembling and setting. Ask a specialist at specialty shop if you do not understand the role of the surrounding parts.
- Refer to the manufacturer service manual when installation.
- Bolts and nuts may get loosen by engine vibration. Make sure not to loosen any bolts and nuts before driving.

### ATTENTION!

- This product does not have enough toughness. If you use to back rest, use this product to as support.
- Pad is not completely waterproof. Rain or washing may penetrate water to inside even if the pad surface is dry. It may affect to passenger.
- This product may get discolored due to direct sunlight, long term use. Please understand when using.



Do not apply excessive force, like rope or tie down belt to deliver vehicle. It may damage this product or surrounding parts.



Do not apply excessive force, like lifting vehicle by using this product, etc. If you turn vehicle, use this product as support.

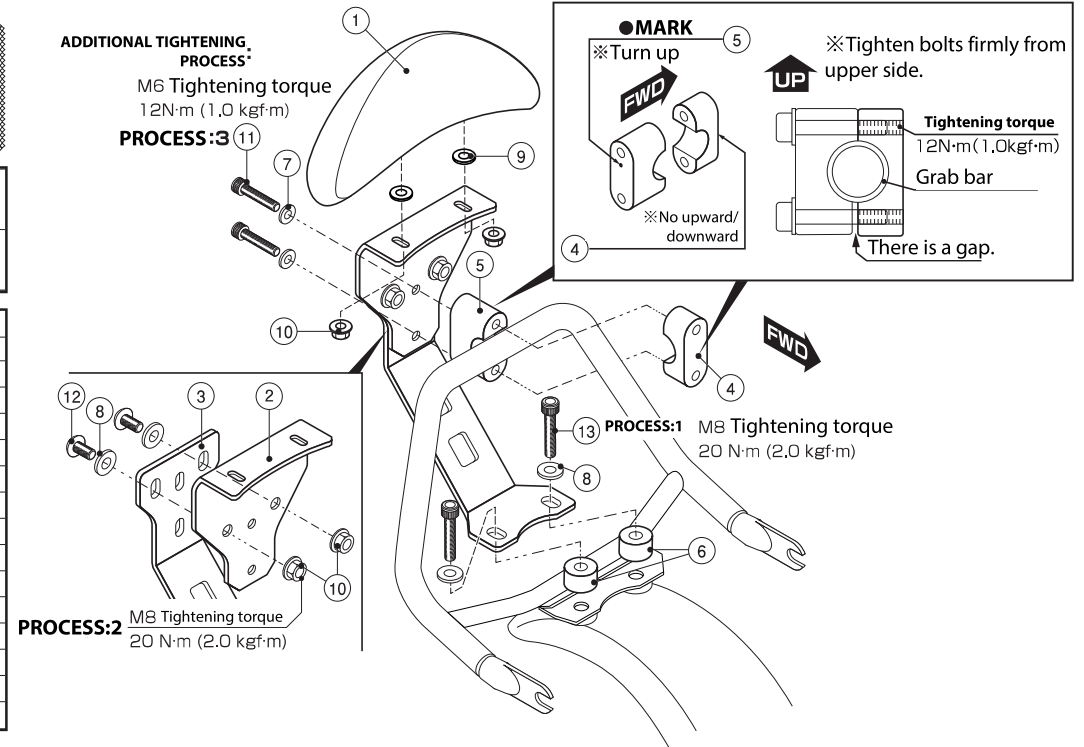
FIGURE	PACKING LIST		CODE	LARGE	SMALL	REMARK
	NAME	QTY				
1	LARGE PAD	300mm	652-0500010	x1	-	
	SMALL PAD	150mm	652-0500020	-	x1	
2	PAD BASE	Tandem stay	-	-	x1	
3	BRACKET STAY	Tandem stay	-	-	x1	
4	UPPER HOLDER CLAMP	CLAMP	-	-	x1	
5	LOWER HOLDER	CLAMP	-	-	x1	
6	SPACER COLLAR(SILVER)	8,2x18x15	0900-093-00053	x2		
7	WASHER	6x13xT1.0	090-0900006	x2		
8	WASHER	8x16xT1.2	090-0900008	x4		
9	WASHER	8x22xT2.3	090-0902008	x2		For pad fixing.
10	FLANGE LOCK NUT	8mm	001-0550008	x4		
11	CAP BOLT	M6x50	060-0500050	x2		
12	BUTTON CAP BOLT	M8x20	080-0550020	x2		
13	CAP BOLT	M8x40	060-0500040	x2		

### REMOVING GENUINE PARTS

- Remove genuine grab bar socket bolt (2pcs).

### HOW TO INSTALL

- 1) Install this product temporarily to genuine grab bar socket bolt (2pcs) position with attached parts.
- 2) When installation, follow the tightening process to tighten bolts temporarily. (If you cannot install correctly, loosen all bolts, then tighten them again following tightening process.)
- 3) Lastly, make sure not to loosen anything before driving.



220909 Y-H



〒 577-0015  
3-8-13 NAGATA, HIGASHI-  
OSAKA, OSAKA, JAPAN