

TANDEM BACK REST BAR type I / II / III No.1/2		
APPLICATION : PCX125(JF28/56/81/JK05/06)/PCX150(KF12/KF18/30)/PCX160(KF47)		
CODE	BACK REST PAD (L SIZE)	BACK REST PAD (S SIZE)
TYPE I	SILVER : 80-652-14260/BLACK : 80-652-14261	SILVER : 652-1426050/BLACK : 652-1426250
TYPE II	SILVER : 80-652-14400/BLACK : 80-652-14401	SILVER : 652-1440050/BLACK : 652-1440250
TYPE III	BLACK (STEEL) : 80-652-14531	-
REMARK	Installing to 125 (JF28) / 150(KF12), making hole to outer cowls is required.	

Thank you for purchasing Kitaco product. Read and understand the instruction before installing.

ATTENTION (MUST READ)

- This instruction sheet is for the instruction for stock condition.
- This product is for grip and back rest when tandem. Do not apply excessive force to back rest. It might cause of break and trouble.
- This product is designed and made exclusive for application models, do not use other models. Do not modify the way which is not listed or it will cause damage and trouble.
- We are not responsible for violation of law or damages and accidents caused by assembling mistake and improper setting.
- Please ask authorized mechanic for assembling and setting.
- Refer to the manufacturer service manual when installation.
- Bolts and nuts may get loosen by engine vibration. Make sure not to loosen any bolts and nuts before driving.
- Uneven brightness : There might be uneven brightness, which is not defect, but special chemical treatment.

PACKING LIST			SILVER	BLACK
FIGURE	NAME	CODE	QTY	
1	BACK REST BAR (SILVER)	652-1426000U	× 1	-
	COLLAR		× 2	-
	BACK REST BAR (BLACK)	652-1426200U	-	× 1
	COLLAR		-	× 2
1	BACK REST BAR (SILVER) type II	652-1440000U	× 1	-
	COLLAR		× 2	-
	BACK REST BAR (BLACK) type II	652-1440200U	-	× 1
	COLLAR		-	× 2
1	BACK REST BAR (BLACK/STEEL) type III	652-1453101	-	× 1
	COLLAR(BLACK) 9x16xL40mm	652-1453102	-	× 2
2	FLANGE LOCK NUT 8mm	001-0550008	× 2	× 2
3	CAP BOLT (SUS) M8 × 55	080-0510055	× 2	-
	CAP BOLT (BLACK) M8 × 55	080-0503055	-	× 2
4	CAP BOLT (SUS) M8 × 45	080-0510045	× 2	-
	CAP BOLT (BLACK) M8 × 45	080-0503045	-	× 2
5	WASHER 8 × 16 × T1.2mm	090-0900008	× 4	-
	WASHER (BLACK) 8 × 16 × T1.2mm	090-0911008	-	× 4
6	WASHER 8 × 22 × T2.3mm	090-0902008	× 2	× 2
7	SPRING WASHER 8mm	091-0500008	× 4	-
	SPRING WASHER (BLACK) 8mm	091-0506008	-	× 4
8	PAD FOR BACK REST (300) L SIZE	652-0500010	× 1	× 1
	PAD FOR BACK REST (150) S SIZE	652-0500020		

ATTENTION!

- Back rest bar is made from stainless, however it might be rust depending on how to use. Especially, after riding under the rain or wash, please wipe water completely and apply anti-rust.
- This product cannot be tough because of the structure. Do not apply excessive force like lifting and turning vehicle using this back rest, rope or tie down to deliver vehicle. When sing as back rest, use it to helping tool.

230626 Y-N



3-8-13 NAGATA,
HIGASHI-OSAKA,
OSAKA, JAPAN

HOW TO INSTALL TO PCX125(JF28) / 150(KF12)

※ If there is a hard degradation like a blem, fatigue and wear etc on the reuse parts, please change to new ones.

After making hole to grab rail cover, install back rest bar on grab rail with attached bolts.

MAKING HOLE

▮ Able to find bolt position mark on back side of cover once remove grab rail cover. Please make hole to it.

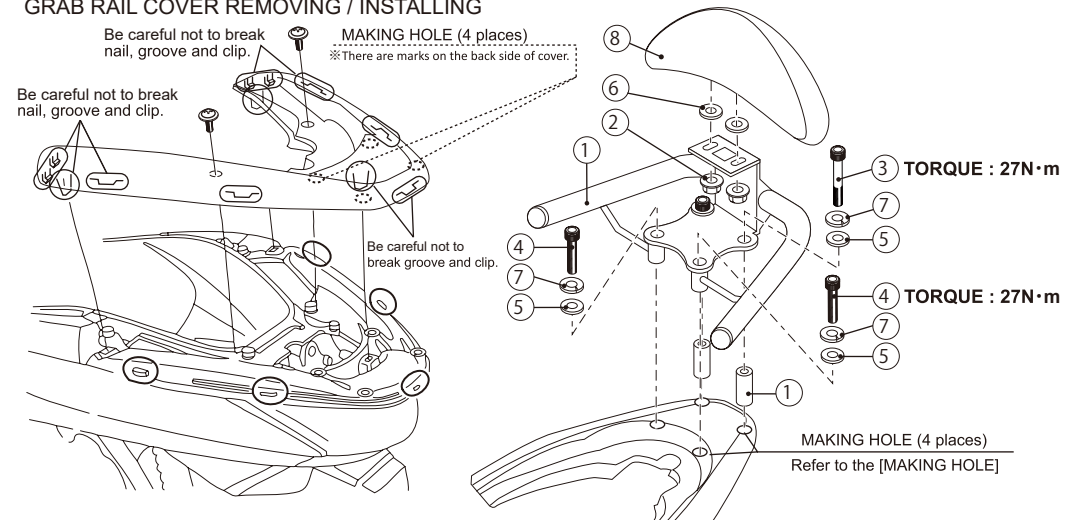
POINT

▮ Use drill slowly to make hole not to apply force to cover. Make hole smaller to larger for prevent from cracking.

▮ Please make $\phi 18 \sim 20$ because back rest collar is $\phi 16$. ($\phi 18$ is the best but difficult to decide where to make, $\phi 20$ is safe.)

125(JF28) / 150(KF12)

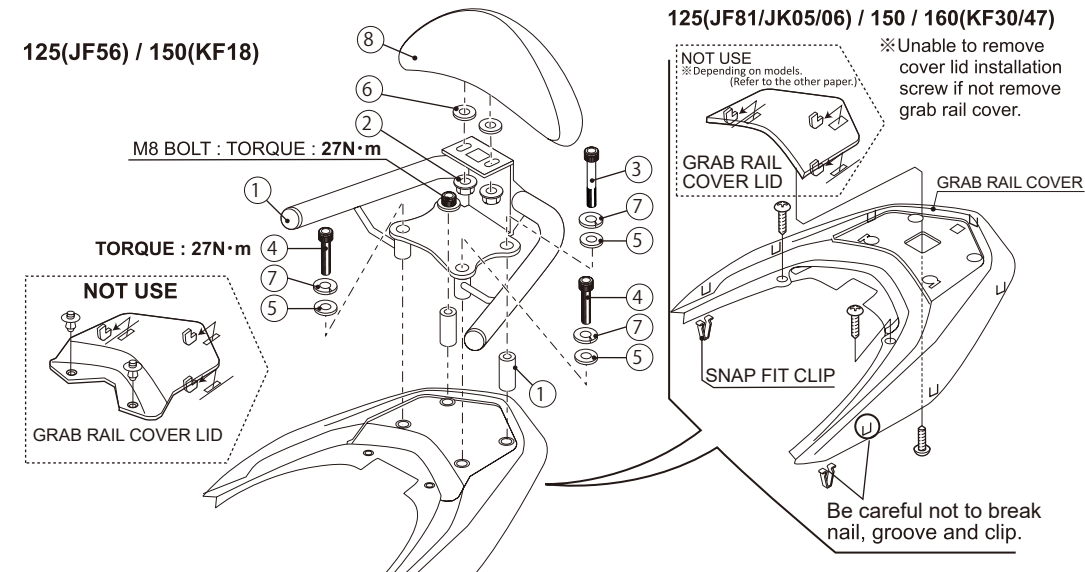
GRAB RAIL COVER REMOVING / INSTALLING



HOW TO INSTALL TO PCX125(JF56/81/JK05) / 150(KF18/30) / 160(KF47)

※ If there is a hard degradation like a blem, fatigue and wear etc on the reuse parts, please change to new ones.

Remove grab rail cover lid, then install back rest bar on grab rail with attached bolts.



TANDEM BACK REST BAR type I / II / III No.1/2	
APPLICATION : PCX125(JF28/56/81/JK05/06)/PCX150(KF12/KF18/30)/PCX160(KF47)	
CODE	BACK REST PAD (L SIZE)
TYPE I	SILVER : 80-652-14260/BLACK : 80-652-14261
TYPE II	SILVER : 80-652-14400/BLACK : 80-652-14401
TYPE III	BLACK (STEEL) : 80-652-14531
REMARK	Installing to 125 (JF28) / 150(KF12), making hole to outer cowls is required.

PCX125/E:HEV/160 (JK05/06/KF47)

PATTERN PAPER FOR

MAKE HOLE TO GRAB RAIL COVER LID

IMPORTANT!

PATTERN PAPER PRINT SETTING

In case of printing this instruction sheet (especially No.2 pattern paper), choose "ACTUAL SIZE" of print setting size option. (Refer to □ on right side.) Other than "ACTUAL SIZE" prints smaller than actual product.

Once make a hole, it is unable to fix. Be careful of it.

We are not responsible for mistaking modify by mistake print.

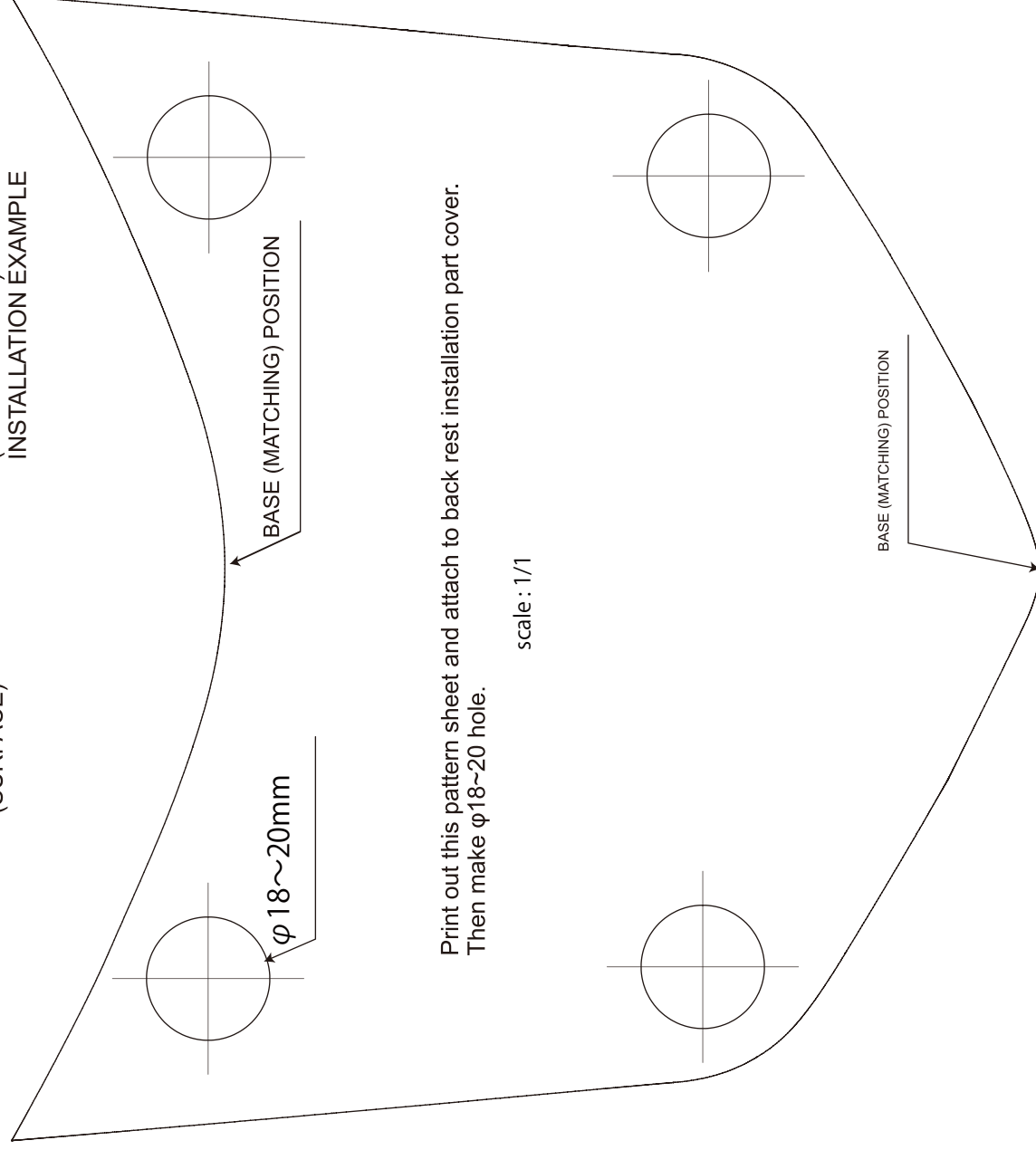
USING APPLICATION : Adobe Acrobat Reader DC



GRAB RAIL COVER LID
(SURFACE)



(HOLE ID:18mm)
INSTALLATION EXAMPLE



Print out this pattern sheet and attach to back rest installation part cover.
Then make φ18~20 hole.

scale : 1/1