

High GRAB BAR	
CODE	(SILVER) 80-653-13200 (BLACK) 80-653-13201
APPLICATION	DAX 125 (JB04)
REMARK	

Thank you for purchasing Kitaco product. Read and understand the instruction before installing.

ATTENTIONS(MUST READ)

- This instruction sheet is for the instruction for genuine condition.
- High GRAB BAR is designed and made exclusive for DAX125(JB04), do not use other models. Do not modify the way which is not listed or it will cause damage and trouble.
- We are not responsible for violation of law or damages and accidents caused by assembling mistake and improper setting.
- Please ask authorized mechanic for assembling and setting. Ask a specialist at specialty shop if you do not understand the role of the surrounding parts.
- Refer to the manufacturer service manual when installation.
- Bolts and nuts may get loosen by engine vibration. Make sure not to loosen any bolts and nuts before driving.

ATTENTION

- This product does not have enough toughness. If you use to back rest, use this product to as support.



Do not apply excessive force, like rope or tie down belt to deliver vehicle. It may damage this product or surrounding parts.



Do not apply excessive force, like lifting vehicle by using this product, etc. If you turn vehicle, use this product as support.

HOW TO INSTALL

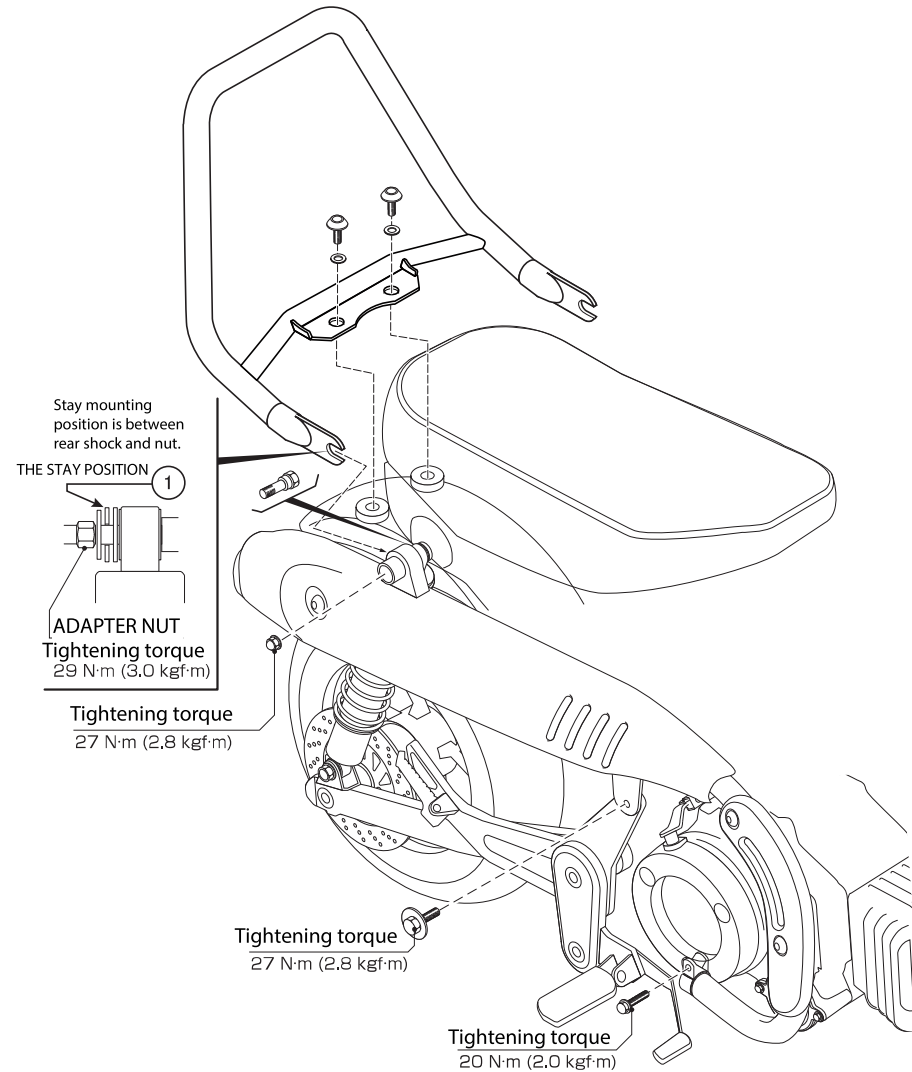
- 1) Loosen both side of rear shock mounting nut and adapter nut for muffler, then remove the genuine grab bar.
- 2) Install Kitaco GRAB BAR to genuine grab bar mounting position. (following to the illustration right side.)
- 3) When installation, tighten the bolts that temporarily tightened. At the end, make sure not to wobble, but works fine before running.

※ **Please tighten the bolts alternately and evenly.** It might not be fitted normally if tightening the bolts one by one.

HOW TO TAKE CARE

Depending on how to use, it might have rust.

Especially, after riding in the rain, wipe moisture perfectly, and apply anti rust.



220517 Y-H



3-8-13

NAGATA, HIGASHI-

OSAKA, OSAKA, 577-0015

JAPAN